

LATEST From the Front.

11.00 A.M.

OSTEND THE CENTRE OF INTEREST—INHABITANTS LEAVING.

LONDON, To-day. Ostend is now the centre of interest in the contest being waged in the western theatre of war. Reports indicate there are now virtually no obstacles in the way of German advance on Ostend and other ports in the northwest of Belgium. Scores of wounded soldiers are being brought into Ostend from Ghent. It is reported that the Allies and Germans were engaged in a serious battle near Ghent on Monday. It is said the German forces were far superior in numbers, and the Allies were obliged to withdraw towards the west. This removes the stumbling block in the way of German progress toward Ostend. A state of panic exists among the inhabitants of Ostend for the Germans are known to have a large force within 20 miles of the city. As fast as ships can be provided residents are fleeing to England, escape by land having been cut off on all sides. The extreme right wing of the German army has been forced back before assault by the Allies and reports indicate that the invader will encounter a strong opposition in attempting to extend their right wing to northern French ports. Only recently German cavalry had progressed as far west as Huzebrouck, but now according to the French War Office, the front of the battle extends from La Bassee through Estaires to Bailul on the Belgian frontier, and across the frontier. Ypres has been occupied by the Allied forces. This indicates a decided gain for the Allies. Outside of this there is no modification in the situation in the western theatre, so far as is indicated by reports couched in general terms, received by the French War Office from the front.

EMINENT PHYSICIANS FOR THE FRONT.

LONDON, To-day. The War Office has appointed Sir John Rose Bradford, Sir Milnot Heringham, Sir Almot Wright, consulting physicians with British Expeditionary force in France. The physicians will have the rank of Colonel, will leave England next week accompanied by three expert bacteriologists.

UNIONIST ORGAN DEFENDS CHURCHILL.

LONDON, To-day. The attempt of the Morning Post to discredit Churchill over despatching a naval division to Antwerp has been met by a vigorous defence from one of Churchill's political foes, the Pall Mall Gazette.

The Unionist journal objects to the fixing of responsibility on one minister, declaring the Ministry as a whole decided on the matter. Further, England was justified in sending a naval brigade on the ground that she could not see Antwerp fall without effort, even one involving great risk to aid the brave Belgians. The fault, adds the Gazette, lies on the nation which would not in time of peace accept the counsels of those who understood war.

11.30 A. M.

MARTIAL LAW IN CONGO.

LISBON, To-day. According to despatches received here from London, martial law has been proclaimed throughout Portuguese Congo.

PORTUGAL AND THE WAR.

LONDON, To-day. Portugal has not yet declared war against Germany, but it is learned in official quarters in London that a partial mobilization of Portuguese troops would be ordered. It is added that Portugal is preparing for all eventualities and that if she participates in the war it will be on the side of Great Britain.

TAKEN AND RETAKEN TWELVE TIMES.

PARIS, To-day. The exact position of the bulk of the allied armies is being kept strictly secret, but it is believed the forces in France and Belgium have joined hands. Since the fall of Antwerp, the German cavalry around Hazebrueck, France, which masked the movement of infantry, had already suffered a wide check from the allies before the battle of Ypres, because the Germans were unable to operate freely in masses owing to the nature of the ground, where they were virtually at the mercy of the allied infantry and artillery. The portion of the line where the encounters have been severest has suddenly changed from Roye to Lesigny where the Germans had tried to make a breach through the allies. The battle, however, is still progressing there, and Roye has been taken and retaken at least twelve times.

MARTZ REBELLION SMALL.

LONDON, To-day. The former German cruisers Goeben and Breslau, which sought refuge in Turkish waters when driven out of the Mediterranean, by British and French warships, may be responsible for the incident of Turkey. Although these ships were ostensibly sold to Turkey, they are still officered and manned by Germans and have been cruising off the Roumanian and Bulgarian coasts of the Black Sea where Russian warships if they sighted the Goeben and Breslau an engagement will be possible. General Botha has sent a force to deal with Colonel Maritz and the rebels under his command. According to an official telegram from the South African Government, the rebellion is

ON FROSTY MORNINGS

it's much more comfortable to peep out from under a warm pair of

Riverside

Blankets

than to be shivering with the cold.

See that you get a pair. None better made anywhere.

not so serious as was feared. It is said that the men under Maritz do not exceed five hundred, including Germans, and that as Dutch farmers are flocking to Botha's standard, Maritz is not likely to receive any large acquisitions.

2,000 Cambridge Officers.

The part played by Cambridge University in the supply of officers to the Army will add another brilliant page to its history. Long before the appeal for officers hundreds of men applied for commissions. Some were fully trained and were given commissions at once.

Up to date the applications through the Cambridge University Officers' Training Corps are just under 2,000. Although the special reserve list is now closed and there are only the new armies and the Territorials open, the applications average from twenty to thirty a day.

Cambridge has been asked for 2,000 officers for the new army. A special training camp has been opened near the city for practical work. About three hundred men attend this camp in batches. A new academic year begins next month and the number of undergraduates in residence probably will be reduced by two-thirds.

Heroic Trawler Skipper.

VESSEL BLOWN UP AFTER MARKING MINES.

Another Grimsby trawler, the Kilmarnock, has been sunk by a mine in the North Sea and only three of the crew of nine have been saved. Two of the survivors were landed at Grimsby yesterday.

Mr. Harris, the skipper, seeing two floating mines, ordered them to be marked by a buoy and was returning to report when the trawler was struck by another mine amidships. The bridge, on which were the skipper and a deck hand, was blown into fragments.

The trawler left Grimsby on Tuesday and struck the mine after getting clear of the Humber at 2.40 p.m. She sank within one minute. The survivors are J. F. Resdale (chief engineer), J. F. Juthouse (second hand), and S. H. Brooks (third hand), who were picked up by another trawler. Resdale is suffering from injuries to the head and fractures of both legs.

The six victims are: J. Harris (skipper), J. Felstead (second engineer), Tillsar and Macklockie (deck hands), S. Thomas (trimmer), and Secher (steward).—Daily Mail, Sept. 24.

London Orders Alien Enemies TO DISCONTINUE USE OF ENGLISH NAMES.

London, Oct. 9.—By a "special order in Council," any German or Austrian in business here who since the outbreak of the war has adopted an English name will be required after October 12 to resume his own name.

Until further notice, says the order, no "alien enemy" will be allowed to change his name without a special permit.

IN TIMES OF WAR you cannot do without clothes any more than you can in times of peace; but at such a time it is necessary that you economize as much as possible; and in order to keep all our help at work we intend to make up Suits and Overcoats, until further notice, at the smallest possible margin of profit, but must be strictly cash orders. Investigate and get our prices; quality of our work needs no advertising. SHURRELL BROS., 355 Water Street next door to Parker & Monroe's.

BUY AN OVERCOAT with the New "Bartell" Pockets.

FOR the man who is really a good dresser and particular about his appearance, we have a splendid asset in the "Bartell" Patent Pocket which we are exploiting in our Men's high-grade Overcoats this Fall. It has special features that must surely appeal to the man who insists on always looking well-groomed and is a boon to anyone who has pockets that must be "for use and not for ornament."

This season's Overcoats in Tweed, Chinchilla, etc., with the "Bartell" pocket are very desirable garments. We carry a full stock of them in all the fashionable colors and mixtures, and in all sizes.

The "Bartell" Pocket never sags or becomes untidy, while it is capable of holding far more than the ordinary pocket. Call and see our Overcoats, see the "Bartell" demonstrated, and get our prices. You'll be delighted at the result.

U. S. Picture & Portrait Co.



The Regent Shoe!

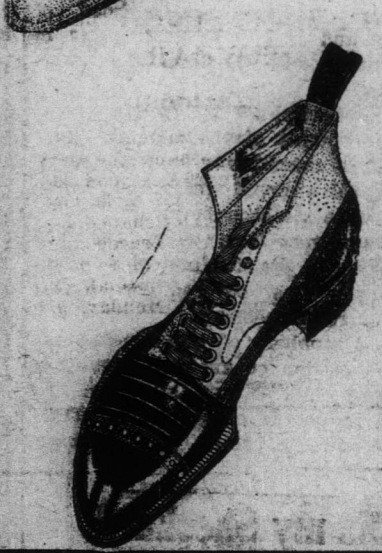
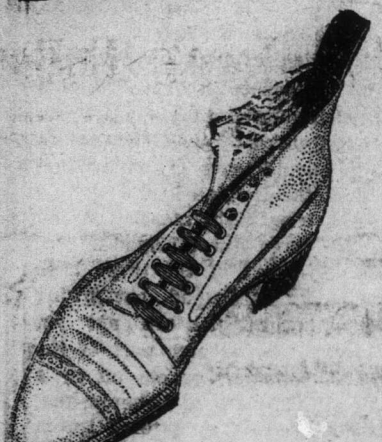
Our showing of Regent Shoes for Fall wear is something we are proud of.

- We have them in
- Box Calf, Blucher style.
- Gun Metal, Blucher style.
- Vici Kid, Blucher style.
- Pat. Leather, Blucher style.
- Tan Calf, Blucher style.

They include every new model, leather and style that will be in vogue this season. Drop in and see them.

PRICE: Black Tan
\$5.00 \$5.25

PARKER & MONROE LIMITED.
The Shoe Men.



See Our Window FOR THE Famous "North Star" WATCH.

Sent to any address in the Island. Guaranteed for three years. Price:

\$2.00.

Joseph Roper.

Alliance Assurance Co., Ltd.

The Right Hon. Lord Rothschild, G.C.V.O., Chairman. Robert Lewis, General Manager.

Total Assets Exceed \$120,000,000.

Fire Insurance of Every Description Effected. LEONARD ASH, CARBONEAR, Sub-Agent for Carbonear District.

BAINE JOHNSTON & Co., Agents for Newfoundland.

The state of war makes our winters none the less severe. In making your old suit or overcoat do for the winter may be false economy. Protect your body from the warring elements by ordering one of our Heavy weight Overcoatings. Owing to general depression in woollens we were enabled to buy in a splendid variety of Winter Suitings. Write for samples and self-measuring cards, as we guarantee results.

John Maundel TAILOR & CLOTHIER ST. JOHN'S, N.F.

Irish {J. J. St. John} Butter

Gentle and simple like

Good Butter.

The s.s. Carthaginian brought us another fresh shipment from the Lakes of Killarney. Nothing better ever entered the Narrows.

J. J. ST. JOHN,

Duckworth Street and LeMarchant Road.



Listen! Confidential.

It's about a Fall Suit and Overcoat for you. We are showing a splendid assortment of materials, of the latest designs and weaves, all thoroughly reliable, and made to measure by us they will make exquisite Suits and Overcoats.

Let us take your order now. We will give you clothing first-class in every particular, and at as low a price as it is possible to get high-class clothing.

W. H. Jackman (The West End Tailor), 39 Water St., West, St. John's, Nfld.

'Phone 795.

sep17,th,s,tu,tf

PREMIUM MOTOR GASOLINE

(In Steel or Wood).

Royalite and Silver Star

KEROSENE

And all Lubricating Oils and Greases.

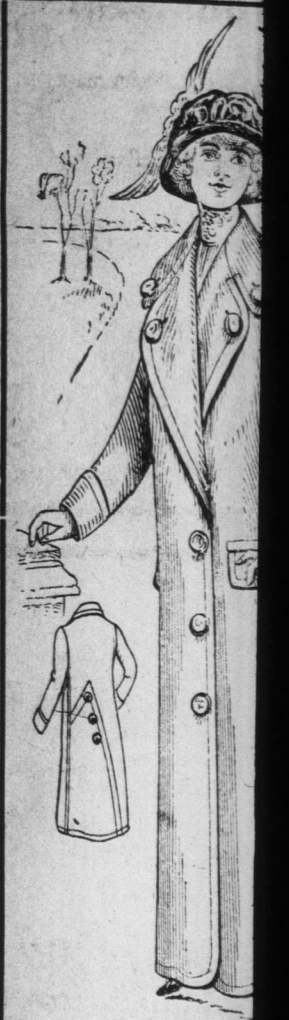
The Best Oil in the Best Packages.

IMPERIAL OIL CO., LTD.

A. H. MURRAY, Distributor.

sept.26,ood,tf

Telegram Ads. Bring Results



ART SATEENS.

All brand new stock range of colourings, patterns and rose designs, prettiest range of colors we have ever handled, in ches, nice sheer finish. \$1.00, to introduce, per yard.

MEN'S BRACES.

4 dozen pairs of Men's Braces, strong elastic cord fastenings; value \$1.00. Friday, Saturday and Monday, per yard.

JOB VELVET

48 cts. yard

A line of coloured Velvets, Green, Brown and perfect goods, with all the of regular goods about the best. Friday, Saturday and Monday, per yard.

BOYS' JERSEYS. A Job Line.

Just the right garment wear. We have shades of Green, Brown and Navy, shoulder, assorted sizes, for the smaller boys, say 6; good value at 70 cents Saturday and Monday.

CREPE TISSUE PAPER. 5c. per roll.

A complete range of Crimsons, Carmines, Maroon, Greens, Blues, Orange, Pink, Sky, Old Terra Cotta, in 19 yard inches wide. Friday, Saturday and Monday, per roll.

WHITE SHEETING. 68 inches wide, extra suitable for medium bed. We have only one size, them. Friday, Saturday & Monday.

ALL WOOL FLANNELS. Home-made Shirts we offer line of White Flannel, nice even and close finish. Reg. 40c. Friday, Saturday and Monday.

ENGLISH TICKET. Nearly 31 inches wide. 'Tis not the excessive weight of weave that appeals good value at 50c. Friday, Saturday and Monday.

NEW QUILT COVERS. 20 pieces of pretty Quilt covers, A very handsome showing a great many values at 15c. Friday, Saturday and Monday, per yard.

KITCHEN CLOTHS. In these you have a hard-wearing, every-day Scrubbing Cloth, made of Crash; size 25 x 32. Reg. 2c. day, Saturday and Monday.

JOB LINEN

Job Linen for 24c. A Towel might say superior quality attached. Good value Friday, Saturday, each.