

Prices of Building Material

PRESSED BRICK, Per M.

TORONTO PRESSED BRICK AND TERRA COTTA WORK
F.O.B. Milton, Ont.

Red No. 1.....	\$13 00
" 2.....	11 50
" 3.....	10 00
Buff No. 1.....	17 00
" 2.....	15 00
Brown.....	25 00
Roman Red.....	30 00
" Buff.....	35 00
" Brown.....	40 00
Hard Building.....	8 00
" Sewer.....	7 00
" Backing.....	7 00

Mosaic and Ornamental from \$2.00 to \$5.00 per 100.
Terra Cotta string Courses and Frieze, from 50c. to \$2.00 per ft. run.
Roofing Tiles, \$20.00 per 1,000.

DON VALLEY BRICK WORKS.

Nos. 1, and 2, Red Pressed Bricks.....	
Nos. 1 and 2 Buff Pressed Brick.....	
No. 1 Brown Pressed Brick.....	
Pompeian Red, Buff and Brown Pressed Bricks.....	
Ornamental Bricks of all kinds for Mantel purposes.....	
enameled bricks of all Colors.....	
Porous Terra Cotta Fireproofing of all Descriptions.....	
Vitrified Street-Paving Bricks.....	
Semi-Vitrified Foundation Bricks.....	
Common Stock Red and Grey Bricks.....	
Sewer Bricks.....	
Stone or Macadamized Roadways.....	

Please write to head office, 54 Toronto St., Toronto, for catalogue and prices.

BEAMSVILLE BRICK AND TERRA COTTA CO.

F.O.B. Beamsville.

Red Peerless Facing.....	\$46 00
" No. 1.....	14 00
" No. 2.....	13 00
" No. 3.....	10 00
Brown Peerless Facing.....	18 00
" No. 1.....	18 00
Buff Peerless.....	20 00
" No. 1.....	18 00
Moulded and Ornamental Brick, from \$3 to \$20 per C.....	15 00
Roman Red (Size 12 x 4 x 1 1/4 in.).....	30 00
" Buff " " ".....	30 00
" Brown " " ".....	25 00
Vitrified Paving Brick No. 1.....	18 00
" " " No. 2.....	15 00
Sewer.....	8 00
Roofing Tile.....	22 00

LUMBER

CAR OR CARGO LOTS, F.O.B. TORONTO.

Per M. Ft.

1 inch No. 1 Pine cuts and better.....	\$49.00 to \$51.00
1 1/4 to 2 inch No. 1 cuts and better.....	54.00 56.00
1 inch No. 3 Pine cuts and better.....	38.00 40.00
1 1/2 to 2 inch No. 3 cuts and better.....	40.00 42.00
1 inch Pine Dressing and better shorts.....	24.00 26.00
1 x 4, 6 and 8 Common.....	20.00 21.00
1 x 10 and 12 Common.....	21.00 22.00
1 inch mill run sidings.....	21.00 22.00
1 inch mill run.....	21.00 22.00
1 x 10 and 12 mill culls.....	17.00 18.00
1 inch dead cull sidings.....	12.00 13.00
1 1/2 inch Flooring.....	27.00 28.00
Hemlock, 1 x 4 to 8 inch.....	17.00 18.00
2 x 4 to 8 inch, 12 to 16 feet.....	18.00 20.00
2 x 4 to 10 inch, 18 feet.....	20.00 22.00
1 1/2 inch No. 1 ft. Pine Lath.....	4.75 5.00
1 1/2 inch No. 2 ft. Lath.....	4.00 4.25
1 1/2 inch No. 1 4 ft. Hemlock Lath.....	3.50 3.75
XXXX Pine Shingles.....	30.0 3.25
XX Cedar Shingles.....	2.25 2.30
B.C. Shingles:	
XXX 6 butts to 2 inch.....	3.35
XXXX 6 to 23-16 inch.....	3.47
XXX 5 to 2 inch.....	3.80

HARDWOODS—PER M. FEET CAR LOTS.

Ash, white, 1sts and 2nds, 1 to 2 inch.....	\$33.00 to \$35.00
Ash, black, 1sts and 2nds, 1 to 1 1/4 inch.....	28.00 30.00
Birch, M. R. 1 inch.....	22.00 24.00
" 1 1/4 inch to 2.....	23.00 25.00
Basewood, Common and better, 1 to 1 1/2 inch.....	23.00 24.00
Basewood, 1 1/2 to 2 inch.....	24.00 26.00
Elm, soft, mill run, 1 to 1 1/2 in.....	23.00 24.00
Elm, rock, mill run, 1 to 1 1/2 in.....	23.00 25.00
Maple, common and better, 1 to 1 1/2 inch.....	22.00 23.00
Oak red plain, 1sts and 2nds, 2 to 4 inch.....	44.00 46.00
Oak, white, 1sts and 2nds, 1 to 1 1/2 inch.....	42.00 44.00
Oak, quartered, 1sts and 2nds.....	70.00 80.00

WESTERN DEBENTURES

We are always open to buy all classes of Manitoba, Saskatchewan and Alberta Debentures.
We are the largest buyers of Western School Debentures in the Dominion of Canada.

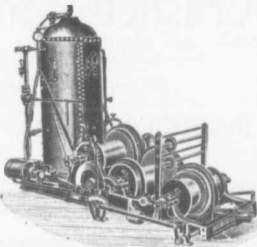
NAY, ANDERSON & CO.
Successors to J.W. NAY Regina, Sask.

Lafarge (NON-STAINING) Cement

PORTLAND CEMENT FIRE BRICKS
DRAIN PIPES FIRE CLAY
CULVERT PIPES SEWER BRICK
SEWER BOTTOMS

F. HYDE & CO.,

King, Queen and Wellington Sts. - MONTREAL



M. BEATTY & SONS, Limited
WELLAND, ONTARIO, CANADA

DREDGES, DITCHERS, DERRICKS, STEAM SHOVELS,

Submarine Rock Drilling Machinery,
Mine Hoists, Hoisting Engines
Centrifugal Pumps for Water and Sand
Stone Derricks, Clam Shell Buckets,
Steel Skips, Coal and Concrete Tube,
and other Contractors' Machinery.

The Toronto Pottery Company, Ltd.

Toronto, Ontario

Manufacturers and Jobbers of

Contractors' Supplies

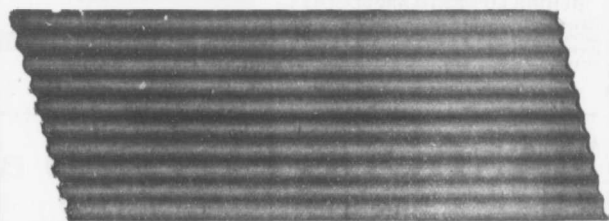
Fire Brick, Paving Brick,

Portland Cement, Sewer Pipe

Write for prices

CORRUGATED IRON

600 TON STOCK. PROMPT DELIVERY.



Pedlar's Corrugated Steel Sheets are manufactured on a 38,000 lb. Oh Press—one corrugation at a time—and are guaranteed straight and true to size Six Hundred Tons in Stock in Oshawa, Montreal, Toronto, Ottawa and London, in gauges varying from 28 to 18, both painted and galvanized. Made in 1", 2" or 2 1/4" corrugation—corrugation lengthwise or across the sheet. Sheets 2 3/4, 4, 5, 6, 8 or 10 feet long at no extra charge. Ask for Catalogue No. 14 R and give specifications for prices.

We are the largest makers of Sheet Metal under the British Flag.
ESTABLISHED 1861 — CAPITAL INVESTED, \$250,000.

THE PEDLAR PEOPLE

Montreal, Que. Ottawa, Ont. Toronto, Ont. London, Ont. Winnipeg, Man. Vancouver, B.C.
321-3 Craig St. W. 423 Buxton St. 11 Colborne St. 69 Dundas St. 761 Lombard St. 615 Fender St.

Write your nearest office. Head office and Works, OSHAWA, ONT.
"Keeping Everlastingly at it Brings Success."