

PUZZLERS' KNOTS.

Edited by ELLSWORTH, P. O. Box 3421, Boston, Mass.

Contributions and answers are cordially invited from all interested in whatever pleases the young, and also from every reader of the TORCH, and the Puzzle fraternity in general. All communications for this Department should be sent to its Editor at the above address.

54.—CROSS-WORD ENIGMA.

My first is in strife, but not in fight;
My second is in war, but not in might;
My third is in season, but not in time;
My fourth is in cent, but not in dime;
My fifth is in eel, but not in fish;
My sixth is in Turkey, but not in dish;
My seventh is in centre, but not in middle;
My eighth is in wit, but not in riddle;
My ninth is in game, but not in hawk;
My tenth is in raven, but not in cock;
My whole is a question agitating the public mind.

JUVENILE READER.

55.—HIDDEN WORD SQUARE.

Name an animal that lives in Australia.
Get Nathaniel to do it.
An American is generally enterprising.
Have you a namesake?

GLEN LYON.

56.—CHARADE.

If in a public coach or car
You should travel near or far,
By the night, or through the day,
Then my first you'd have to pay.

If my second you should meet
In the sandy desert heat,
Its appearance you would greet,
And also find it quite a treat.
When you stand with drooping head
By the side of loved one dead—
Then my whole is often said.

EPHEY.

57.—LETTER REBUS.

Double my first and get manner.
My second with give a circle.
Double my third and get custom.
Double my fourth and get among.
My fifth is a Latin numeral.

My whole mankind enjoys but a short time,
and each successive year sees it leaving us.
The ancients worshipped me, and my presiding deity was made a cup-bearer of the gods.

N. V.

58.—WORD SQUARE.

A band of the earth; a sign; a river; a well-known abbreviation.

LABEL.

59.—NUMERICAL ENIGMA.

I am composed of 16 letters.
My 13, 11, 12 is a machine used for lifting heavy weights.
My 14, 15, 16, 5, 9 are used in nearly every house.
My 10, 8, 7, 9, 2, 4 is in every ship.
My 1, 3, 6, 14, 10, 2 is a German author.
My whole is a celebrated American.

DATE PIT.

60.—COMPOUND DIAMOND.

First Diamond: A letter; dexterity; potter's clay; a metal; a letter.
Second Diamond: A letter; a difficulty; a tree and its fruit; over; a letter.
Third Diamond: A letter; qualified; to depress; to dress white leather; a letter.
Fourth Diamond: A letter; to dampen; a

sweetheart; a river in Great Britain; a letter.

SH. V.

Answers in two weeks.

ANSWERS TO PUZZLES IN APRIL 6.

42.—TORCH.

43.—CHARLES
O H E H E
R A T A N Y
O P E R O S E
N P A I N
R E V E L T Y
R E V E L R Y

44.—NEW T
E Y R Y
W R A P
T Y P E

45.—ALERT
L O N E
E N D
R E
T

46.—MANGO
S A I N T
G R I E F
N O T E D
N E W E L

CHAT WITH KNOTTERS.

GLEN LYON, St. John.—Your "Knots" are excellent; the more the better. Three solutions are right. Come often.

SH. V., St. John.—Four of your answers are correct. Thanks for your puzzles to hand. They are always welcome.

N. V., St. John.—Answers three correctly. Puzzle appears. Always glad to hear from you.

OLD ABE.—We will be pleased to receive your contributions, and trust they will soon be forthcoming.

EVERY reader of the TORCH is cordially invited to favor our columns with puzzles of all kinds.

BEGINNER, St. John.—Correctly solves three puzzles. Remember that even "stickers" may be overcome. Glad to know you intend to contribute regularly.

EPHEY, St. John.—Please accept thanks for last. Happy to hear you like the prize.

ST. J. writes: Why is a full measure like the Editor of our "Knots?" Because both are Ellsworth. Also: In what way are little round hills and the Editor of the TORCH alike? Because both are knolls. We hope our correspondent's wit isn't contagious.

BELIEVE ME, IF ALL THOSE ENDEARING YOUNG CHARMS.

Believe me, if all those endearing young charms,
Which I gaze on so fondly to-day,
Were to fade by to-morrow, and fleet in my arms,

Like fairy-gifts fading away!
Thou wouldn't still be adored, as this moment thou art.

Let thy loveliness fade as it will,
And around the clear ruin each wish of my heart

Would entwine itself verdantly still.

It is not while beauty and youth are thine own,
And thy cheeks unprofaned by a tear,
That the fervor and faith of a soul may be known.

To which time will but make thee more dear!
O! the heart that truly loved never forgets,
But as truly loves on to the close.

As the sunflower turns to her god when he sets
The same look which she turned when he rose.

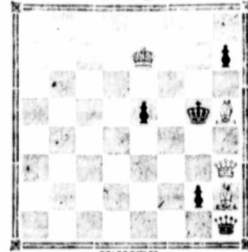
CHESS COLUMN.

All communications and contributions to be addressed to J. E. NARRAWAY, P. O. Box 70.

Problem No. 7.

BY SAMUEL LOYD.

BLACK.



White to play and mate in three moves.

GAME No. 17.

Played between Messrs. DeVesser and St. Enix in New York.

SCOTCH GAMBIT.

White.—Mr. DeV. Black.—Mr. St. E.

- | | |
|-----------------|------------------|
| 1. P—K 4 | 1. P—K 4 |
| 2. Kt—K B 3 | 2. Kt—Q B 3 |
| 3. P—Q 4 | 3. P×P |
| 4. Kt×P | 4. Kt×Kt (a) |
| 5. Q×Kt | 5. P—Q 3 |
| 6. Kt—B 3 | 6. Kt—B 3 |
| 7. B—K Kt 5 | 7. B—K 2 |
| 8. Castles. | 8. B—K 3 |
| 9. B—Q B 4 | 9. Castles |
| 10. P—B 4 | 10. B×B |
| 11. Q×B | 11. Kt—Kt 5 (b) |
| 12. B×B | 12. Q×B |
| 13. Q—K 2 | 13. P—K B 4! |
| 14. P—K R 3 | 14. Kt—R 3 |
| 15. P—K Kt 4 | 15. P×Kt P (c) |
| 16. P×P | 16. R×P |
| 17. Kt—Q 5 (d) | 17. Q×P |
| 18. Kt×R | 18. Q×Kt (ch) |
| 19. K—Kt | 19. Q×P |
| 20. Q—K 7! | 20. Q—Q B sq (e) |
| 21. R×Kt | 21. Q—Q sq |
| 22. Q—K 6 (ch) | 22. K—R sq |
| 23. K×P (ch) | 23. K×R |
| 24. R—R sq (ch) | 24. Q—R 5 |
| 25. R×Q mate | |

(a) This form of defence is not favourable. It enables the first player to obtain too great a command over the board.

(b) The Kt ought to have gone to K sq.

(c) Extremely risky; we would have taken the other Pawn.

(d) Black's three Pawns are of no avail as he cannot get away with his plunder.

(e) Losing a piece off-hand.—*American Chess Journal*.

SOLUTIONS.

PROB. 6.

- | | |
|-----------|-------------|
| 1. Kt×P | 1. P×Kt |
| 2. B×R | 2. K moves. |
| 3. mates. | |

PROBLEM 7.

- | | |
|-------------|--------|
| 1. Q×B (ch) | 1. R×Q |
| 2. R mates. | |

No correct answers received.

The *American Chess Journal* has appeared in a new form with an elaborately engraved frontispiece. It is now published by Dr. C. C. Moore, New York, assisted by Messrs. Loyd, Mackenzie and Mason.

An excellent way to avoid paying the butcher. Never buy any fresh meat.—V. F. Nees. Yes, that ought to meet the difficulty. We didn't think of that beef-ore.