

DE LAVAL

**WHEN YOU START,
START RIGHT.**

A prominent and prosperous dairyman was asked by a new beginner, what two things he considered essential to laying the foundation for dairy success. He answered by saying: "Selected thoroughbred cows and a De Laval Separator."

Very many thousand successful users of De Laval Separators can testify to the soundness of this advice.

Write us for some good, sensible separator talk, whether we can sell you a separator or not.

MONTREAL
WINNIPEG
NEW YORK
CHICAGO
SAN FRANCISCO
PHILADELPHIA
POUGHKEEPSIE

The De Laval Separator Co.
77 YORK STREET,
TORONTO.

**THE KEY STONE
OF DAIRY SUCCESS**

IDEAL MILK TICKET

Used by every well-equipped factory.

The Monthly Statement Card shown here is exact size of front. It is made of stout Manila, and can either be delivered by the milk-hauler or sent to the patron in an ordinary envelope. On back of card rules are given for "The Care of Milk."

The Cards are now ready; order early.

PRICE:

25c. for 100; or a package of 1000 for \$2.00 post-paid.

A factory of 100 patrons will require from 800 to 1,000 tickets during the season.

—Address—

**The
Farming
World**

Confederation Life
Building, Toronto

Monthly Statement

Of Milk delivered at the _____

Factory during the month of _____

By _____

PUBLISHED BY THE FARMING WORLD, TORONTO

	1ST WEEK	2ND WEEK	3RD WEEK	4TH WEEK	5TH WEEK
Monday	lbs.	lbs.	lbs.	lbs.	lbs.
Tuesday					
Wednesday					
Thursday					
Friday					
Saturday					
Weekly Totals					
Per cent. of butter fat in milk					

Total milk supplied for the month.....lbs.

Total butter-fat supplied for the month.....lbs.

On the dates underlined the milk was sour or badly tainted.

The butter-fat test covers the milk supplied for the week or weeks intervening between the last test and the one indicated by the per cent. of fat in above table.

Mistakes or complaints, if reported to the maker or the secretary, in writing, will be promptly attended to.

Read carefully and observe the rules governing the care of milk on the back of this card.

Purest
and
Best

WINDSOR SALT

ASK FOR IT AND
TAKE NO OTHER.

Awarded Silver and Bronze Medals,
Paris Exposition, 1900.

The CANADIAN SALT CO.
Limited
Windsor, Ont.

AGENTS WANTED.

Gentlemen or Ladies \$2 a day sure, not to canvass, but to employ agents. Position permanent. \$600 per year and expenses. Reliable firm with best references. Experience unnecessary. M. A. O'KEEFE, District Manager. Address care of "The Farming World," Toronto.

TRADE "DAISY" MARK

Can be fitted with adjustable Brakers as shown in cut.

Notice—Two bolts only to place to set up.

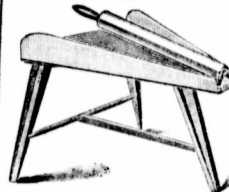
Our new improved Steel Stand Tempered Steel Cased Bicycle Ball Bearings, with four nicely fitted wheels, adjustable feet for holding it firm when churning.

Over 80,000 in use.



EVERY BUTTER WORKER

Neatly made, simple, strong, and durable and cheap. Prices given on application.

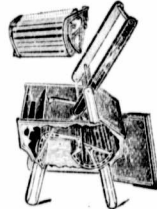


VOLLMAR IMPROVED

PERFECT

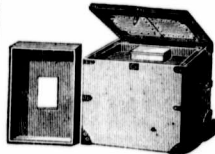
WASHER.

Will wash more clothes in less time, do it better and easier, with less wear and tear, than any other machine.



BUTTER SHIPPING BOX.

Convenient, durable. Made with Detachable Hinges and movable ice box. Will give prices and fuller particulars on application.



The WORTMAN & WARD MFG. CO., Ltd.,
London, Ont.
Extra Branch, 60 McGill St., Montreal, Que.