

Organized anarchy . . .

Student politics reach their most frenzied state in early February.

That's when the Students' Union elections are held and when a number of hopeful candidates give their all to become the next year's SU executive.

They run singly, or in teams called slates, and when the dust clears, the victors move into the SU offices in SUB and prepare themselves for endless committee meetings and long hours of policy making.

Last year, four members of Dean Olmstead's slate and an individual from another slate, Kyle Peterson, won the SU election.

Peterson later resigned and interim replacement Glen Gallinger took over.

And here they are....

President Olmstead

There is probably no student on campus that has as high a profile or is as busy as the president of the Students' Union (SU).
 cial situation of the students' union during his term.
 "It's going to be an exciting year," he says, "I'm looking to it."

This year Dean Olmstead, a fourth-year engineering student is occupying this demanding position.

He says his role is to set the general direction of student issues and SU business.

"I didn't think it would be this busy," he says. "Most of my time is spent going to meetings. So far, it has been an incredible education."

The president attends both university and SU committee meetings, including the Board of

Governors, General Faculties Council, the University Planning Committee, and Students' Council.

Olmstead says he wants to stress improving existing SU facilities rather than expansion and wants to stabilize the finan-



Gallinger Interim VP Finance

The vice-president finance and administration is in charge of looking after the \$4 million students' union budget collected from student fees and SU businesses.

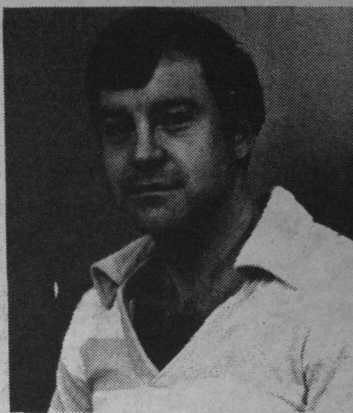
Glen Gallinger, a third-year law student and MBA and engineering graduate, is the SU's interim vp finance and administration.

Appointed by the SU executive in mid-August, to replace Kyle Peterson, Glen will face a

by-election in October to determine if he has the mandate of the student body.

The vp finance and administration also chairs the Administration Board, which is responsible for dealing with all SU expenditures and is the final authority on financial matters.

Glen is looking forward to working closely with other members of the executive and wants to bring SU services into a break-even situation this year.



Bell VP Internal

Sharon Bell, vice-president internal of the SU has a lot of plans.

And her portfolio, with its responsibility for the SU Building and SU services, will give her a chance to fulfill them.

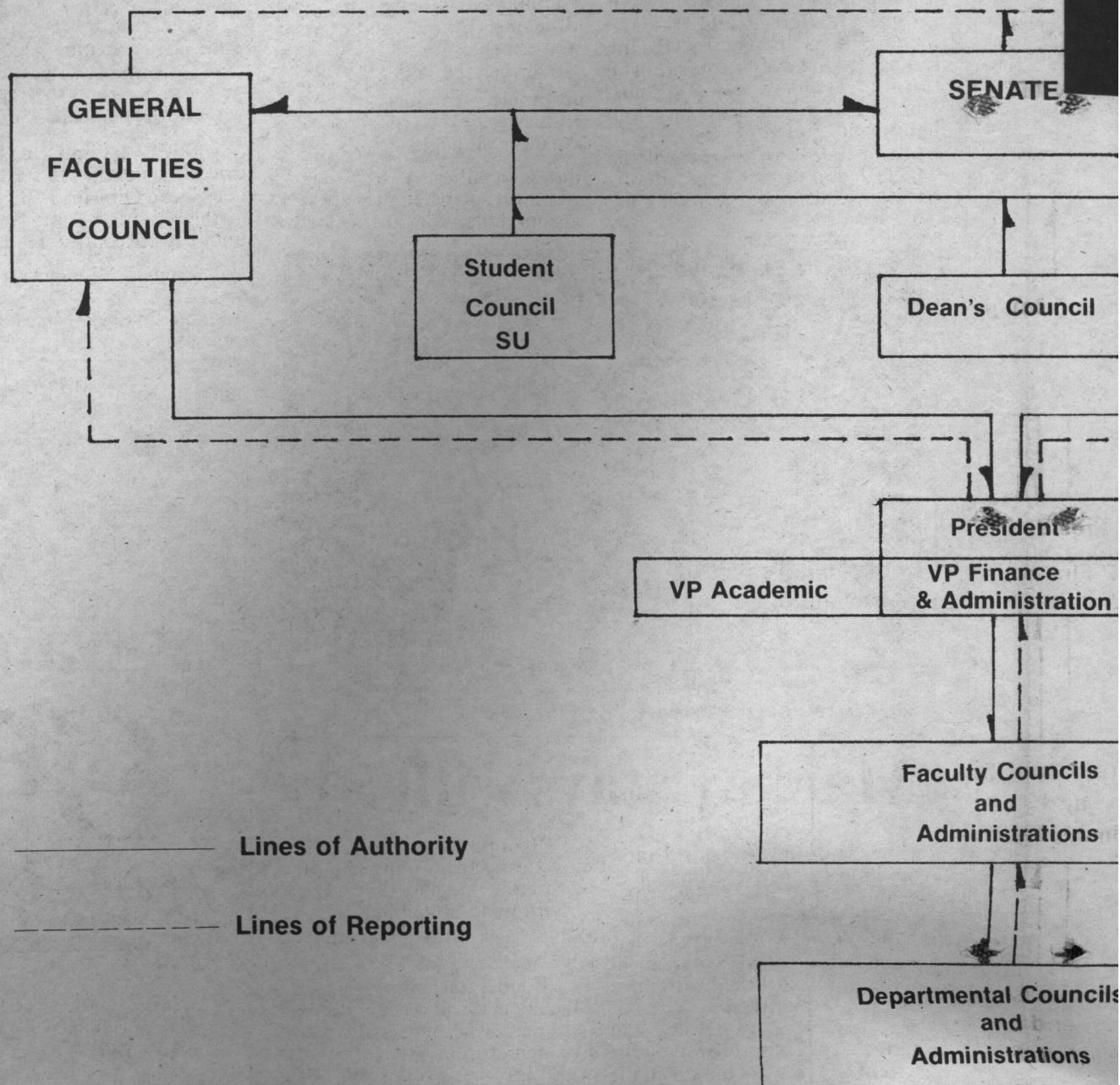
Food services will be a big priority, says Sharon. The SUB coffee shop recently opened and changes to Fridays are being looked at.

The SUB copy centre and information desk are also being

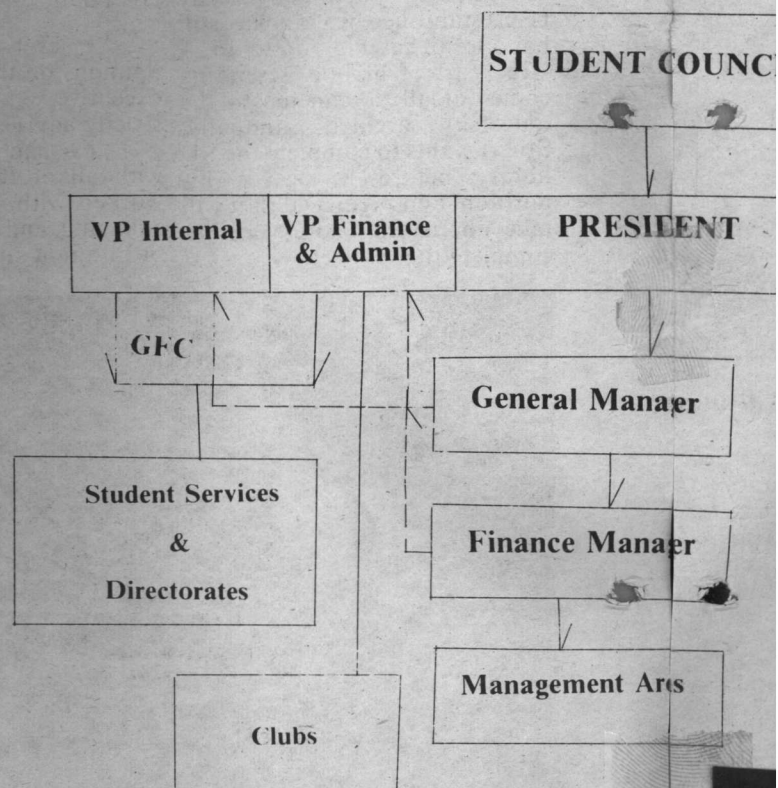
enlarged.

In addition, Sharon is trying to increase the profile of the SU. "We need a more positive image," she says. "We want students to use the services we provide."

A fourth-year education student, Sharon says the hard work is just part of the job. "I don't mind putting in a long day if I can see the results. It's far more rewarding than writing a term paper."



The university administration can be difficult to understand. While we aren't making any promises, this chart may help sort out the conf



The Students' Union is much larger and more complex than many of us realize. This diagram