



Trans-Canada Limited

New cross-continent flyer

3½ Days to Vancouver

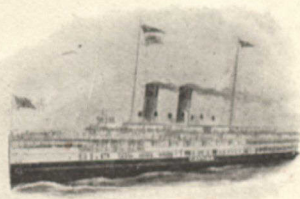
fastest time across the continent made by any railroad.

Leaves Toronto at 1.45 p.m. every Tuesday, Thursday and Saturday during July and August.

Palace Sleepers Only.

Tickets, berth reservations and full particulars at C.P.R. City Ticket Office, corner King and Yonge Streets. Phone Main 6580.

Niagara Navigation Co. (Limited)



CONNECTING

TORONTO — NIAGARA FALLS — BUFFALO

6 trips daily (except Sunday). Write for Illustrated Booklet.

B. W. FOLGER, Manager, TORONTO, CANADA

West Shore Railroad

EXCURSIONS TO

New York

THURSDAY, AUGUST 15th.

TUESDAY, AUGUST 27th.

ROUND TRIP FARES

Toronto via Lewiston	- -	\$11.35
Toronto " C. P. R. or G. T. R.	-	13.35
Hamilton " T. H. & B. or G. T. R.		11.35
Buffalo or Niagara Falls	- -	9.00

TICKETS good going on regular trains and on SPECIAL TRAIN leaving Buffalo at 10.30 p.m. will be

GOOD 15 DAYS

RETURNING INCLUDING DATE OF SALE.

TICKETS will also be available for passage, without additional charge, between Albany and New York on the

HUDSON RIVER STEAMERS.

For full particulars call on or address—
L. DRAGO, 80 YONGE STREET, TORONTO

CANADIAN NORTHERN AND QUEBEC & LAKE ST. JOHN RYS

The NEW and SHORT ROUTE to the FAR-FAMED ST. MAURICE and SAGUENAY RIVERS and to the delightful SUMMER RESORTS and FISHING GROUNDS North of Quebec.



**Lake
St.
Joseph
Hotel**

A new and delightful Summer Resort, overlooking one of the most beautiful lakes in Canada. Only 50 minutes' ride from Quebec or seven hours from Montreal by the Canadian Northern Quebec Railway.

Hotel Roberval, Lake St. John

Most Northerly Summer Resort in Eastern America. Passengers leaving Toronto at 10.00 p.m. may reach Hotel Roberval, Lake St. John, at 6.55 p.m. following day by this route.

A beautifully illustrated guide book free on application to:

ALEX. HARDY,
G. P. A., Q & L. St. J. Ry.
QUEBEC

GUY TOMBS,
G. P. A., C. N. Q. Ry.
MONTREAL



"Highlands of Ontario"

The ideal Summer Resort region of America, including the following fascinating districts:

MUSKOKA LAKES

LAKES SIMCOE AND COUCHICHING
LAKE OF BAYS

MAGANETAWAN RIVER
TEMAGAMI

LAKE NIPISSING AND FRENCH RIVER

30,000 ISLANDS GEORGIAN BAY

ALGONQUIN PARK

KAWARTHA LAKES, Etc.

40,000 SQUARE MILES of
lake, river and island scenery.

1,000 to 2,000 feet above sea level. Fishing—Shooting—Canoeing—Camping. PERFECT IMMUNITY FROM HAY FEVER. Splendid train service to all districts via GRAND TRUNK RAILWAY SYSTEM.

Booklets descriptive of any of the above districts free on application to J. D. McDONALD, District Passenger Agent, Toronto, Ontario.

W. E. DAVIS
Passenger Traffic Manager
MONTREAL

G. T. BELL
Gen. Pass. and Ticket Agent
MONTREAL