

# POOR DOCUMENT

## M C 2 3 5

THE EVENING TIMES AND STAR, ST. JOHN, N. B., TUESDAY, AUGUST 12, 1919

### SHOPS YOU OUGHT TO KNOW

Designed to Place Before Our Readers the Merchandise, Craftsmanship and Service Offered by Shops and Specialty Stores.

#### AUTO SERVICE

AUTOMOBILE TO HIRE. PHONE M. 8990, W. A. Cooper. 62120-8-14.

#### BARGAINS

REMNANTS OF FLANNELETTE and Towellings. Fancy Quilting and Basting. At Wetmore's, Garden street.

#### CHIMNEY SWEEPING

WITH MECHANICAL APPARATUS we make and repair chimneys and conductors, pipe, kettles, boilers, also plastering and whitewashing. Repair shop, corner Brussels and Haymarket square. Open evenings. Phone 3714.

#### ENGRAVERS

F. C. WESLEY & CO., ARTISTS and Engravers, 69 Water street. Telephone M. 382.

#### HATS BLOCKED

HATS BLOCKED—LADIES' PANAMA, chip, tangle and straw hats blocked over in latest styles. Mrs. T. R. James, 280 Main street, opposite Adelaide.

#### HAIRDRESSING

MISS McGRATH, N. Y. PARLORS. Imperial Building. Special sale of hair goods in every design. All branches of work done. Gents' manicuring. Phone Main 2696-51. N. Y. graduate.

#### IRON FOUNDRIES

UNION FOUNDRY AND MACHINE Works Limited, George H. Waring, manager, West St. John, N. B. Engineers and Machinists, Iron and Brass Foundry.

#### MACHINIST

ALLISON DARROCH, MACHINIST—machinist and millwright job shop. Robinson place, off Nelson street. Phone Main 3696.

#### MASONRY

THOMAS H. RILEY, PLASTERING, Cement Finishing, Concrete, Chimney Repairing. Phone 1977-11. 68 St. James street. 04015-8-13

#### MEN'S CLOTHING

WE HAVE JUST RECEIVED SOME young men's suits and overcoats, ready to wear, made of good cloth and trimmings, splendidly tailored, fair and pleasing price. W. J. Higgins & Co., Custom and Ready-to-Wear Clothing, 182 Union street.

#### MONEY ORDERS

WHEN ORDERING GOODS BY mail send a Dominion Express Money Order.

#### MONEY TO LOAN

MONEY TO LOAN ON FREEHOLD and Leasehold Security. Loans negotiated for both borrower and lender. Tel. M. 684 Heber S. Keith, 50 Princess street.

#### OPTOMETRIST

WILL TEST YOUR EYES AT YOUR home by appointment. K. W. Epstein & Co., 180 Union street. Main 3554.

#### PIANO MOVING

PIANO MOVING BY AUTO, Furniture moved to country, parties and picnics taken out, general cartage. Phone Arthur Stachhouse, Main 1197.

#### PROFESSIONAL

TO LADIES—A SPECIAL TREATMENT for removal of hairs, moles, wrinkles and much more. Call or write M. Wilby Medical Electrical Specialty and Massage, 46 King Square, St. John.

#### REPAIRING

FURNITURE REPAIRING AND UP-holstering, 276 Union. Phone 915-11.

#### ROOFING

ROOFING—GRAVEL ROOFING. Joseph Mitchell, 204 Union street. 04706-8-14

#### SECOND-HAND GOODS

WANTED TO PURCHASE—LADIES' and Gentlemen's cast off clothing, boots, musical instruments, jewelry, bicycles, guns, revolvers, tools, etc. Best prices paid. Call or write M. Lampert Bros., 555 Main street. Phone 2892-11.

WE BUY AND SELL SECOND Hand Clothing. People's Second Hand Store, 573 Main street. Phone 2384-41. 104637-9-11

STOVES, RANGES AND FURNITURE bought and sold. Highest cash prices paid. Call or write J. Williams, 16 Dock street, St. John, N. B. Telephone 328-21.

WANTED TO PURCHASE—GENTLEMEN'S cast off clothing, boots, musical instruments, jewelry, bicycles, guns, revolvers, tools, etc. Highest cash prices paid. Call or write J. Williams, 16 Dock street, St. John, N. B. Telephone 328-21.

### FINANCIAL

NEW YORK STOCK MARKET. (J. M. Robinson & Sons, Members Montreal Stock Exchange.)

New York, Aug. 12.

Am Car & Pdy	131	131	130 3/4
Am Locomotive	87 1/2	87 1/2	89 1/2
Am Beet Sugar	87	86 1/2	85
Am Can	92	91 1/2	90 1/2
Am Sugar	132	132	132
Am Steel Pdy	42	42	42
Am Smelters	76 1/2	76 1/2	76 1/2
Am Tel & Tel	102 1/2	102 1/2	100 1/2
Anacosta Mining	67 1/2	67 1/2	68
Atch. T. & S. Fe.	92	91 1/2	91 1/2
Brooklyn R. T.	28 1/2	28 1/2	28 1/2
Bell & Ohio	42 1/2	42 1/2	42 1/2
Baldwin Loco	105 1/2	105 1/2	110
Butte & Superior	25	25	25
Bell Steel—B	86 1/2	86 1/2	86 1/2
Chino Copper	45 1/2	45 1/2	45 1/2
Canadian Pacific	154 1/2	154 1/2	154 1/2
Central Leather	98 1/2	98 1/2	98 1/2
Cruible Steel	134 1/2	134 1/2	134 1/2
Erie	16 1/2	16 1/2	16 1/2
Great North Pfd.	89	89	89
General Motors	219 1/2	219 1/2	220
Inspiration	61	60 1/2	60 1/2
Intl Marine Com.	56 1/2	56 1/2	56 1/2
Intl Marine Pfd.	114 1/2	114 1/2	114 1/2
Industrial Alcohol	129 1/2	129 1/2	129 1/2
Kennecott Copper	37 1/2	37 1/2	37 1/2
Midvale Steel	51 1/2	51 1/2	51 1/2
Maxwell Motors	47	47	47
Mex Petroleum	178 1/2	178 1/2	178 1/2
Miami	27 1/2	27 1/2	27 1/2
Northern Pacific	89	88 1/2	87 1/2
N. Y. Central	73 1/2	73 1/2	73 1/2
New Britain	32 1/2	32 1/2	32 1/2
Pennsylvania	43 1/2	43 1/2	43 1/2
Pressed Steel Car.	87 1/2	87 1/2	87 1/2
Reading	75 1/2	75 1/2	75 1/2
Republic I & S.	43 1/2	43 1/2	43 1/2
St. Paul	43 1/2	43 1/2	43 1/2
Sloss Sheffield	61 1/2	61 1/2	61 1/2
Southern Ry.	97 1/2	97 1/2	97 1/2
Southern Pacific	97 1/2	97 1/2	97 1/2
Studebaker	108 1/2	108 1/2	108 1/2
Union Pacific	124 1/2	124 1/2	124 1/2
U. S. Steel	108 1/2	108 1/2	108 1/2
U. S. Rubber	125 1/2	125 1/2	124 1/2
Utah Copper	87	87	87
West Electric	52	52 1/2	52 1/2
Willis Overland	32 1/2	32 1/2	32 1/2

### INVESTMENTS

BY BRITISH IN ARGENTINA

Referring to news reports alleging friction between Great Britain and Argentina due to extensive English investments in the latter country, the National Bank of Commerce in New York says that \$2,000,000,000 has been invested in Argentina.

"Owing to the newness of the country and the character of its industries," the bank says, "Argentina has always been a heavy importer of foreign capital. A report recently issued by the director-general of commerce and industries of Argentina clearly shows the predominance of British capital in the industrial organization of the republic."

The total amount of British investment there is not known, but two billion dollars has been considered a conservative estimate. The following figures include only the realized capital of limited liability companies:

Railways and other commercial enterprises: National, \$314,810,981; British, \$1,234,902,683; other countries, \$112,381,280; total, \$1,562,094,944. Industrial enterprises: National, \$128,879,242; British, \$78,793,246; other countries, \$18,041,120; total, \$225,713,610. Total: National, \$443,690,173; British, \$1,403,695,931; other countries, \$127,622,550; total, \$1,975,008,654.

"It is known that British capital in railways alone amounts to \$1,387,756,484. This represents about ten times the railway investments of any other foreign country in the Argentine. The distribution of British capital by industries shows how thoroughly the British lender has penetrated into the economic life of the country:

Tramways, \$133,494,202; Forestal products, \$1,239,982; Gas, \$29,601,644; Mortgage companies, \$28,408,685; Tobacco, sugar, wine and beer, \$26,062,336; Docks, warehouses and wharves, \$27,241,081; Farms and ranches, \$24,662,999; General stores, \$21,067,079; Telephones and telegraphs, \$15,557,540; Electric light and power, \$13,239,411; Metallurgical and mineral, \$5,429,837.

"The close trade relations between Argentina and the United Kingdom are shown by the fact that for a long period almost one-third of the total imports into Argentina were received from Great Britain, to which one-third of Argentine total exports went sent. The war has resulted in a small reduction in the amount of imports from Great Britain but exports to her show a tendency to increase."

PRISON FOR PROFITEERS

Fines Not to be Accepted, Says Chicago Federal Official

Chicago, Aug. 12.—Food boarders and profiteers convicted of violations of the law will not be let off with insignificant fines, according to District Attorney Clyne on return from Washington. The attorney is the only place for those who prey upon the public, Mr. Clyne said.

"No quarter," Mr. Clyne declared, "will be shown to those who have taken advantage of conditions brought about by the world war to hoist prices to such a high pitch that necessities of life have become so many cases become prohibitive. The government is going to this matter with hammer and tongs. We are going to prosecute to the very limit with a view to sending to the penitentiary every individual and every clique of men banded together to rob the public."

Harry A. Wheeler, former food administrator for Illinois, came out in favor of the immediate revival of government food control and its principal features: Licensing of all producers and merchants and prevention of cross-selling among dealers.

TELEGRAPH COMPANIES AFTER HIGHER TOLLS

Four in Canada Make Bid for 25 Per Cent. Increase

Toronto, Aug. 12.—Four Canadian telegraph companies have applied to the board of railway commissioners to increase the scale of tolls. The petition argues that since the tolls were reduced by the board on March 30, 1916, wages have increased sixty per cent and cost of material 85 per cent. The companies consider, therefore, that an advance of 25 per cent is toll necessary.

The application is signed by officials of the Canadian Pacific Railway Company, the Great Northwestern, Western Union Telegraph Companies and the Great Trunk Railway Company.

GREAT GATHERING OF BUSINESS MEN PLANNED

Los Angeles, California, Aug. 12.—The greatest gathering of prominent business men of the world ever assembled in a single city is planned by the Chamber of Commerce of Los Angeles, for May, 1920.

This will be a Pan-Pacific Trade Conference to follow the national foreign trade convention that will meet early in May in San Francisco. This will bring together 100,000 and 400,000 of the chief business men of the United States to the Pacific coast and while here it is planned to give them opportunity of exchanging ideas and conferring with prominent exporters and importers of all countries bordering on the Pacific.

Trade authorities of international program will participate in the program and a great floral fiesta, including features of old Spain and the orient will be held during the gathering.

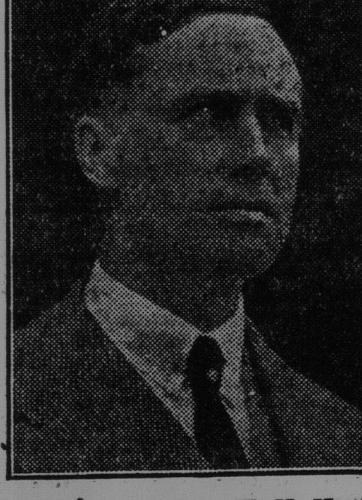
"VICIOUS SUGAR COMBINE" Ottawa, Aug. 11.—"Sugar supplies in Canada are being artificially restricted and sugar prices are being unwarrantably advanced by combines and conspiracies which are absolutely pernicious and unlawful," is the statement of Dr. R. J. McFall, cost of living commissioner.

### NEW LIBERAL LEADER



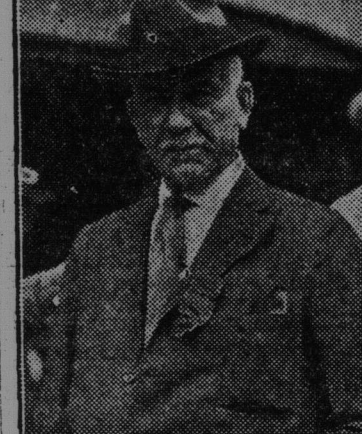
Hon. William Lyon Mackenzie-King, elected leader of the Liberal party; photographed at the national Liberal convention—British & Colonial Press photograph.

### SASKATCHEWAN'S PREMIER



A snapshot of Hon. W. M. Martin, premier of Saskatchewan, taken at the national Liberal convention, after he declined the nomination for national leader—British & Colonial Press photograph.

### THE LIBERAL CONVENTION



Hon. G. P. Graham of Brockville, who was defeated in the ballot for leader at the national Liberal convention—British & Colonial Press photograph.

### POLITICAL CANDIDATE

W. C. Good, the candidate of the United Farmers of Ontario for the House of Commons in North Brant.



### THIRD DOSE RELIEF! FIFTH DOSE! DIARRHOEA STOPPED

Diarrhoea does not need to persist for any length of time until the whole system is weakened and debilitated. No other disease so quickly undermines the strength and brings about a condition of prostration and very often total collapse.

Dr. Fowler's Extract of Wild Strawberry is not only prompt and effective in checking the diarrhoea, but at the same time acts as a stimulant, strengthens the heart and braces up the whole system, and one of its principal points is that it does not leave the bowels in a constipated condition.

Mr. W. H. Arnold, Fort Qu'Appelle, Sask., writes:—"A few years ago while on thrashing, I had a severe attack of diarrhoea. Nothing I took seemed to do me any good. I was getting weaker all the time. Hearing that Dr. Fowler's Extract of Wild Strawberry was good for diarrhoea, I went into town and procured a bottle. After the third dose I felt relief, and after I had taken the fifth dose the diarrhoea had stopped. I always keep it in the house, and would not be without it."

See that you get the original "Dr. Fowler's." It has been on the market for the past 74 years. Substitutes may endanger your health. Price 50c. Put up only by The T. Milburn Co., Limited, Toronto, Ont.

USE The Want Ad Way

### LEAGUE OF NATIONS

The American Draft and That Adopted at Paris Contrasted

Washington, Aug. 12.—The original American draft of the League of Nations covenant sent to the foreign relations committee yesterday by President Wilson, contains provisions widely differing from the league covenant as adopted at Paris.

The much debated provisions of Article X. of the present covenant for guaranteeing territorial integrity of league members is almost identical with a clause in the American draft. The latter was as follows:

"The contracting powers undertake to respect and to protect as against external aggression the political independence and territorial integrity of all states members of the league."

Many of the arbitration provisions are virtually the same in the two drafts. The American draft also contained the plan finally adopted for a council and a larger assembly and embodied a disarmament programme similar to that in the final covenant. It also provided for an economic boycott of covenant breakers.

The American plan contained no provision for withdrawal from membership and made no reference to the Monroe doctrine. It also contained a provision not finally accepted under which the league would "inquire into the feasibility of abolishing compulsory military service."

There also was a provision in the American plan omitted from the final draft which would declare it a "fundamental covenant that no power should overstep in the agreements for rights on the high seas."

### SINCE WAR STARTED

Cost of Living Has Increased 71 Per Cent.

Boston, Aug. 12.—After a survey of conditions the country over, the National Industrial Conference Board announced that the cost of living for American wage earners was 71 per cent higher in July, 1919, than at the outbreak of the world war in July, 1914.

This was said to represent an advance of 6 per cent since March, 1919, and 12 per cent since June, 1918. The increase of 71 per cent since July, 1914, compared with an increase of 61.2 per cent up to March, 1919, of 65.9 per cent up to November, 1918, and of 52.3 per cent up to June, 1918.

The total increase for the five years period on food was 85 per cent; shelter, 28 per cent; clothing, 100 per cent; fuel, heat and light, 57 per cent.

### R. C. G. A. BAND, OF QUEBEC, TO HALIFAX TO PLAY FOR PRINCE

Quebec, Aug. 12.—The Royal Canadian Garrison Artillery Band, stationed in town for Europe, arrived in port on Sunday with part of the raft, the remainder having broken loose in a gale. It will probably be picked up and landed here this week. This immense raft was ready for sea two years ago but, owing to war conditions, it was impossible to have it towed across at that time. As the inventor, Mr. Bayley, still has absolute faith in the venture, another effort will probably be made soon to have the big raft successfully towed across.

### GOVERNOR GENERAL'S SON ON THE METEGAMA

Quebec, Aug. 12.—The Hon. M. C. S. Hochelaga, with the vice-regal party on board, put in at Rimouski wharf yesterday and a message was delivered to their Excellencies informing them that their son, Lord Charles Cavendish, is returning from overseas on board the C. P. O. S. Metegama.

### Died Awaiting Trial

Montreal, Aug. 12.—A waiting trial on charge of murder, Louis Forget, ninety years of age, of Hull, Que., died at the Bordeaux jail. Forget was accused of having killed the blind son last spring by throwing him into a river near Ottawa. He gave himself up to the police at Hull a short time later. The man was committed to prison on a charge of murder on Bordeaux pending the calling of his case.

### It Pays To Shop At ARNOLD'S

Department Store 90 Charlotte St.

HOSIERY Ladies' Cotton Hose, 15c, 25c, pair. 50c Ladies' Hose, 35c and 39c. Silk Ankle Hose, Special, 45c. Children's Black or White Cotton Ribbed Cotton Hose, all sizes 25c and 39c. Tan Hosiery 25c, 30c, 35c, 39c. Ladies' White Cotton Hose, 15c, 25c, 39c. Children's Dresses 35c, 49c, 75c, 85c, 95c, \$1.10, \$1.45. Children's White Dresses 95c, \$1.10, \$1.45 to \$2.25. Middy Blouses 75c, 95c, \$1.10, \$1.25, \$1.45 to \$3.95. Ladies' Silk Waists 95c, \$1.45, \$1.85, \$2.25, \$2.95. Ladies' Skirts in black or navy, Special \$2.50 each. Ladies' White Skirts, \$1.25. Summer Undervests 25c, 35c.

### NEW DOLLS

Specials at 25c, 60c, \$1.20. Dolls Carriages, \$1.25 to \$3.50. New Toys. Shaker Plannel Remnants 22c. yd. Curtain Muslin 15c, 17c. yd. New stock Enamel Ware. 3 Fly Paper Coils for 5c. Green Screen Cloth 15c. yd. 12 Fruit Jar Rings for 5c. 12 Paper Picnic Plates for 9c. 12 Paper Napkins for 4c. Large Bar Castle Soap 12c. 3 Infants' Delight Soap for 10c. 3 Infants' Delight Soap (large) for 25c. (Hygienic Soap) 5c. Special 2 in 1 Tan Shoe Polish 10c. 25c. to 35c. Tooth Brushes, all 15c. Scrub Brushes 5c, 10c. Decorated Window Shades, Special \$1.25. Khaki Handkerchiefs 10c. Red Cheese Cloth, Special 5c. yd. China Cups and Saucers 22c, 25c, 30c, 35c, 50c. China Cups and Saucers, three decorations, Special 22c. each. China Plates 15c, 25c.

### NEW CUT GLASS

at Wholesale Prices Sugar and Cream Sets \$1.25, \$2.25. 6-Inch Handled Nappy \$1.45. 8-Inch Bowl \$2.25. 11-Inch Deep Bowl \$2.25. 11-Inch Colory Trays, \$1.75, \$2.00. 7-Piece Water Sets, \$1.85 and \$2.50. Cut Glass Tumblers 15c and 20c. each.

### New Arrivals

In Suits for Young Men

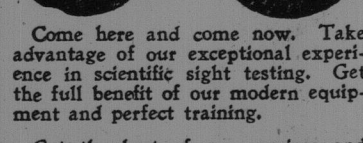
They're coming all the time now. Many interesting features in high shoulders, high waist line, new lapels and sleeves. Double and single breasted types with waist seam.

Never were smarter tailored suits shown than now—\$30, \$45, \$50—and \$25 to \$60.

### Gilmour's, 68 King St

Tailoring, Clothing, Furnishings

"A Good Place to Buy Good Clothes"



Come here and come now. Take advantage of our exceptional experience in scientific sight testing. Get the full benefit of our modern equipment and perfect fitting.

Get the best of our services and learn whether you really need glasses or not.

K. W. EPSTEIN & CO. Optometrists 193 Union Street. M. 3554. Open Evenings.

### GREAT RAFT TO BE TOWED ACROSS OCEAN

Part Reaches Sydney But Rest Breaks Away in a Gale

Sydney, N. S. W., Aug. 12.—A large ocean going tug, which sailed from Bonne Bay, Nfld., last week with a huge Bayley raft in tow for Europe, arrived in port on Sunday with part of the raft, the remainder having broken loose in a gale. It will probably be picked up and landed here this week. This immense raft was ready for sea two years ago but, owing to war conditions, it was impossible to have it towed across at that time. As the inventor, Mr. Bayley, still has absolute faith in the venture, another effort will probably be made soon to have the big raft successfully towed across.

### FINLAND AND GERMANY GETTING TOGETHER?

Paris, Aug. 12.—Admiral Paul Von Hintz, former secretary for foreign affairs of Germany, is in Helsinki and has had an interview with M. Holsti, Finnish minister of foreign affairs, according to advices received here. This has attracted considerable attention in Paris, as indicating a possible rapprochement between Finland and Germany.

### SOLDIER CANDIDATE FOR THE ONTARIO HOUSE

Hamilton, Ont., Aug. 12.—Lieut. Samuel Landers, a prominent labor man and veteran of France, is in the field as successor to the late Allan Stuchin, in the provincial house for the riding of East Hamilton.

### Attention!

To show our appreciation of the coming Great Celebration, we are offering for this week only a

### 10% Discount

Reserving nothing from our great stock, consisting of Geo. A. Slater's Invictus goods, Empress goods and d lines from the leading manufacturers of Canada.

### Gray's Shoe Store

397 Main Street Main 1099. 8-18

### INSURANCE

FIRE—MARINE AUTOMOBILE PLATE GLASS

### Vroom & Arnold

Bank of B. N. A. Building D. G. Peters, sub-agent. 8-19