

THE EVENING TIMES AND STAR, ST. JOHN, N. B., SATURDAY, MAY 22, 1915

7

The Store of Quality **Don't Pay Fancy Prices For Pure Food** **The Store of Cleanliness**
Buy at PHILPS'
These Cash Prices Will Hold Good Thursday, Friday and Saturday.

Fresh Figs (largest size).....20c. lb.	15c. pkgs. "Bird's" Blanc Mange Powder, 2 for 25c.
14 lbs. Fine Granulated Sugar with orders For \$1.00	Fresh Macaroni Alphabets for Soups, pkgs. 15c.
California Seedless Raisins.....20c. doz.	
2 packages Grapefruit.....25c.	
40c. tin California Peaches, finest quality, large tins.....35c.	
20c. jar Lipton's Marmalade.....15c.	
20c. jar Maconochie's Marmalade.....15c.	
25c. bottle Pure Gold Essence Lemon or Vanilla.....10c.	
Imported Malt Vinegar, full quart bottles.....25c.	
Best Quality Green or Wax Beans, 3 tins for 27c.	
Libby's Whole Strawberries, in heavy syrup, 10c. each	
Instant Postum.....25c.	
Powdered Ammonia, large pkgs.....25c.	

PHILPS' Ideal Grocery, Where Cleanliness and Satisfaction Prevail
Phone Main 886

EATING IN BERLIN.
Humorist's Idea of the Wonderful Appetites of the Natives in Germany's Capital.

The average Berliner has a double chin running all the way around and four rolls of fat on the back of his neck, all closely clipped and shaved, so as to bring out their full beauty and symmetry, and he has a figure that makes him look as though an earthquake had shaken loose everything on the top floor and it had all fallen through into his dining-room.

Your true Berliner eats his regular daily meals, four in number and all large ones, and in between times he now and then gathers a bite. For instance, about ten o'clock in the morning he knocks off for an hour and has a few cups of hard boiled coffee and some sweet, sticky pastry with whipped cream on it.

Then about four o'clock in the afternoon he goes to the office.

STORES AND BUILDINGS
BRIGHT Offices, opposite Dominion Express. Apply 74 Germain street. 27888-5-27.

In the Colorado district, rainstorms frequently occur during which not one single drop of water reaches the earth. The rain can be seen falling from the clouds high above the desert, but when the water reaches the strata of hot, dry air beneath the clouds the water is entirely absorbed before falling half the distance to the ground.

There are forty-seven distinct and separate varieties of German sausage, and three of them are edible, but the ham, in my judgment, is greatly over-rated.

In Germany, however, there is a peasant who agrees to smother in young cabbage, which is delicious and in season plentiful. The only drawback to complete enjoyment of this dish is that the peasant and various German restaurants have the confounded nerve to charge you, in our money, forty cents

for a whole pheasant and half a peck of cabbage—say enough to furnish a meal for two tolerably hungry adults and a child—Irvn S. Cobb, in Saturday Evening Post.

Every 10c Packet of **WILSON'S FLY PADS** WILL KILL MORE FLIES THAN \$8.00 WORTH OF ANY STICKY FLY CATCHER

PROCLAMATION

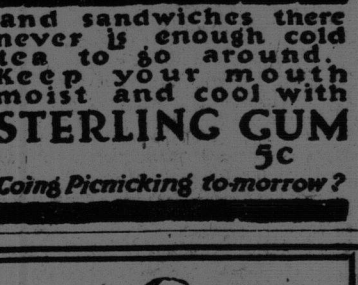
His Honor the Lieutenant-Governor respectfully requests that Sunday, the twenty-third day of May inst. be observed as "Patriotic Sunday" throughout the province, and that on that day the clergymen of the several churches and others in sermons and addresses impress upon their hearers the necessity of further assisting the motherland in the great struggle in which she is engaged for a better civilisation by joining those who have already enlisted and are now so gallantly fighting the battles of the empire.

WILLIAM CRUIKSHANK,
Private Secretary,
Fredericton, N. B., May 18, 1915.
5-28.

After Hard Boiled Eggs

and sandwiches there is enough cold tea to go around. Keep your mouth moist and cool with **STERLING GUM** 5c

Going Picnicking to-morrow?



FOR colds in the chest or sore throats; for rheumatism or stiffness; for sprains and cramps. Capsicum "Vaseline" brings quick relief.

There are many other "Vaseline" preparations—simple home remedies that should be in every family—Carbolated "Vaseline," an antiseptic dressing for cuts, insect bites, etc.; "Vaseline" Analgesic, for neuralgia and headaches; pure "Vaseline," for piles, chilblains, etc., and others.

AVOID SUBSTITUTES. Insist on "Vaseline" as the original name. The name CHESEBROUGH MANUFACTURING CO., Canton, Mass., is blown in the glass of each bottle. For sale at all Chemists and General Stores. Free booklet on request. CHESEBROUGH MFG. CO. (Consolidated), 1880 CHABOT AVE., MONTREAL.

CAPSICUM Vaseline

It does all that a mustard plaster will do. It is cleaner, easier to apply, and will not blister the skin.

THE HERO, Brass Ring

THE DANDY

THE MAYFLOWER

THE HERO, Brass Ring

THE DANDY

THE MAYFLOWER

THE HERO, Brass Ring

THE DANDY

THE MAYFLOWER

THE HERO, Brass Ring

THE DANDY

THE MAYFLOWER

THE HERO, Brass Ring

THE DANDY

THE MAYFLOWER

THE HERO, Brass Ring

THE DANDY

THE MAYFLOWER

THE HERO, Brass Ring

THE DANDY

THE MAYFLOWER

THE HERO, Brass Ring

THE DANDY

THE MAYFLOWER

THE HERO, Brass Ring

THE DANDY

THE MAYFLOWER

THE HERO, Brass Ring

THE DANDY

THE MAYFLOWER

THE HERO, Brass Ring

THE DANDY

THE MAYFLOWER

THE HERO, Brass Ring

THE DANDY

THE MAYFLOWER

THE HERO, Brass Ring

THE DANDY

THE MAYFLOWER

THE HERO, Brass Ring

THE DANDY

THE MAYFLOWER

THE HERO, Brass Ring

THE DANDY

THE MAYFLOWER

THE HERO, Brass Ring

THE DANDY

THE MAYFLOWER

THE HERO, Brass Ring

THE DANDY

THE MAYFLOWER

THE HERO, Brass Ring

THE DANDY

THE MAYFLOWER

McAvity's Messenger



"DIAMOND SPECIAL"

Ball Bearing Mower.

This machine is unequalled for its even cutting and long wearing qualities. It is made of material of the highest quality and fitted with Patent Ball Bearing adjusting device. The Reel has five blades of best knife steel and is adjusted to Cutter Bar by special adjusting and Locking Device.

Size, inches 14 16 18 20

Each\$5.00 \$7.50 \$9.50 \$12.00

W. & B. "JUNIOR"

Ball Bearing Mower.

This machine is made of high grade material throughout, is strong and at the same time of light weight and draft. The Ball Bearing adjustment is the simplest and most effective made. The frame is strong and rigid and all working parts are increased to protect them from dust.

Size, inches 14 16 18 20

Each\$5.50 \$7.75 \$9.75 \$12.50

W. & B. "JUNIOR"

Ball Bearing Mower.

This machine is made of high grade material throughout, is strong and at the same time of light weight and draft. The Ball Bearing adjustment is the simplest and most effective made. The frame is strong and rigid and all working parts are increased to protect them from dust.

Size, inches 14 16 18 20

Each\$5.50 \$7.75 \$9.75 \$12.50

W. & B. "JUNIOR"

Ball Bearing Mower.

This machine is made of high grade material throughout, is strong and at the same time of light weight and draft. The Ball Bearing adjustment is the simplest and most effective made. The frame is strong and rigid and all working parts are increased to protect them from dust.

Size, inches 14 16 18 20

Each\$5.50 \$7.75 \$9.75 \$12.50

W. & B. "JUNIOR"

Ball Bearing Mower.

This machine is made of high grade material throughout, is strong and at the same time of light weight and draft. The Ball Bearing adjustment is the simplest and most effective made. The frame is strong and rigid and all working parts are increased to protect them from dust.

Size, inches 14 16 18 20

Each\$5.50 \$7.75 \$9.75 \$12.50

W. & B. "JUNIOR"

Ball Bearing Mower.

This machine is made of high grade material throughout, is strong and at the same time of light weight and draft. The Ball Bearing adjustment is the simplest and most effective made. The frame is strong and rigid and all working parts are increased to protect them from dust.

Size, inches 14 16 18 20

Each\$5.50 \$7.75 \$9.75 \$12.50

W. & B. "JUNIOR"

Ball Bearing Mower.

This machine is made of high grade material throughout, is strong and at the same time of light weight and draft. The Ball Bearing adjustment is the simplest and most effective made. The frame is strong and rigid and all working parts are increased to protect them from dust.

Size, inches 14 16 18 20

Each\$5.50 \$7.75 \$9.75 \$12.50

W. & B. "JUNIOR"

Ball Bearing Mower.

This machine is made of high grade material throughout, is strong and at the same time of light weight and draft. The Ball Bearing adjustment is the simplest and most effective made. The frame is strong and rigid and all working parts are increased to protect them from dust.

Size, inches 14 16 18 20

Each\$5.50 \$7.75 \$9.75 \$12.50

W. & B. "JUNIOR"

Ball Bearing Mower.

This machine is made of high grade material throughout, is strong and at the same time of light weight and draft. The Ball Bearing adjustment is the simplest and most effective made. The frame is strong and rigid and all working parts are increased to protect them from dust.

Size, inches 14 16 18 20

Each\$5.50 \$7.75 \$9.75 \$12.50

W. & B. "JUNIOR"

Ball Bearing Mower.

This machine is made of high grade material throughout, is strong and at the same time of light weight and draft. The Ball Bearing adjustment is the simplest and most effective made. The frame is strong and rigid and all working parts are increased to protect them from dust.

Size, inches 14 16 18 20

Each\$5.50 \$7.75 \$9.75 \$12.50

W. & B. "JUNIOR"

Ball Bearing Mower.

This machine is made of high grade material throughout, is strong and at the same time of light weight and draft. The Ball Bearing adjustment is the simplest and most effective made. The frame is strong and rigid and all working parts are increased to protect them from dust.

Size, inches 14 16 18 20

Each\$5.50 \$7.75 \$9.75 \$12.50

W. & B. "JUNIOR"

Ball Bearing Mower.

This machine is made of high grade material throughout, is strong and at the same time of light weight and draft. The Ball Bearing adjustment is the simplest and most effective made. The frame is strong and rigid and all working parts are increased to protect them from dust.

Size, inches 14 16 18 20

Each\$5.50 \$7.75 \$9.75 \$12.50

W. & B. "JUNIOR"

Ball Bearing Mower.

This machine is made of high grade material throughout, is strong and at the same time of light weight and draft. The Ball Bearing adjustment is the simplest and most effective made. The frame is strong and rigid and all working parts are increased to protect them from dust.

Size, inches 14 16 18 20

Each\$5.50 \$7.75 \$9.75 \$12.50

W. & B. "JUNIOR"

Ball Bearing Mower.

This machine is made of high grade material throughout, is strong and at the same time of light weight and draft. The Ball Bearing adjustment is the simplest and most effective made. The frame is strong and rigid and all working parts are increased to protect them from dust.

Size, inches 14 16 18 20

Each\$5.50 \$7.75 \$9.75 \$12.50

W. & B. "JUNIOR"

Lawn Mowers

Beautiful lawns are made and kept beautiful only by constant care and attention.

Buy a good lawn mower and it will be a pleasure for you to care for your lawn. The mowers we sell are built in a factory where they have specialised for years on mowers that cut clean and hold an edge. High class materials and workmanship being used in their construction, they therefore wear well, look well and work well.

W. & B. "JUNIOR"

MOWER

This is a fully guaranteed and easy running machine made on the same lines as the W. & B. Junior Ball Bearing Mower, except that instead of Ball Bearings it is fitted with self-aligning adjustable Reel Shaft Bearings.

Size, inches 14 16 18 20

Each\$5.75 \$6.00 \$6.50 \$6.75

W. & B. "JUNIOR"

Ball Bearing Mower.

This machine is made of high grade material throughout, is strong and at the same time of light weight and draft. The Ball Bearing adjustment is the simplest and most effective made. The frame is strong and rigid and all working parts are increased to protect them from dust.

Size, inches 14 16 18 20

Each\$5.50 \$7.75 \$9.75 \$12.50

W. & B. "JUNIOR"

Ball Bearing Mower.

This machine is made of high grade material throughout, is strong and at the same time of light weight and draft. The Ball Bearing adjustment is the simplest and most effective made. The frame is strong and rigid and all working parts are increased to protect them from dust.

Size, inches 14 16 18 20

Each\$5.50 \$7.75 \$9.75 \$12.50

W. & B. "JUNIOR"

Ball Bearing Mower.

This machine is made of high grade material throughout, is strong and at the same time of light weight and draft. The Ball Bearing adjustment is the simplest and most effective made. The frame is strong and rigid and all working parts are increased to protect them from dust.

Size, inches 14 16 18 20

Each\$5.50 \$7.75 \$9.75 \$12.50

W. & B. "JUNIOR"

Ball Bearing Mower.

This machine is made of high grade material throughout, is strong and at the same time of light weight and draft. The Ball Bearing adjustment is the simplest and most effective made. The frame is strong and rigid and all working parts are increased to protect them from dust.

Size, inches 14 16 18 20

Each\$5.50 \$7.75 \$9.75 \$12.50

W. & B. "JUNIOR"

Ball Bearing Mower.

This machine is made of high grade material throughout, is strong and at the same time of light weight and draft. The Ball Bearing adjustment is the simplest and most effective made. The frame is strong and rigid and all working parts are increased to protect them from dust.

Size, inches 14 16 18 20

Each\$5.50 \$7.75 \$9.75 \$12.50

W. & B. "JUNIOR"

Ball Bearing Mower.

This machine is made of high grade material throughout, is strong and at the same time of light weight and draft. The Ball Bearing adjustment is the simplest and most effective made. The frame is strong and rigid and all working parts are increased to protect them from dust.

Size, inches 14 16 18 20

Each\$5.50 \$7.75 \$9.75 \$12.50

W. & B. "JUNIOR"

Ball Bearing Mower.

This machine is made of high grade material throughout, is strong and at the same time of light weight and draft. The Ball Bearing adjustment is the simplest and most effective made. The frame is strong and rigid and all working parts are increased to protect them from dust.

Size, inches 14 16 18 20

Each\$5.50 \$7.75 \$9.75 \$12.50

W. & B. "JUNIOR"

Ball Bearing Mower.

This machine is made of high grade material throughout, is strong and at the same time of light weight and draft. The Ball Bearing adjustment is the simplest and most effective made. The frame is strong and rigid and all working parts are increased to protect them from dust.

Size, inches 14 16 18 20

Each\$5.50 \$7.75 \$9.75 \$12.50

W. & B. "JUNIOR"

Ball Bearing Mower.

This machine is made of high grade material throughout, is strong and at the same time of light weight and draft. The Ball Bearing adjustment is the simplest and most effective made. The frame is strong and rigid and all working parts are increased to protect them from dust.

Size, inches 14 16 18 20

Each\$5.50 \$7.75 \$9.75 \$12.50

W. & B. "JUNIOR"

Ball Bearing Mower.

This machine is made of high grade material throughout, is strong and at the same time of light weight and draft. The Ball Bearing adjustment is the simplest and most effective made. The frame is strong and rigid and all working parts are increased to protect them from dust.

Size, inches 14 16 18 20

Each\$5.50 \$7.75 \$9.75 \$12.50

W. & B. "JUNIOR"

Ball Bearing Mower.

This machine is made of high grade material throughout, is strong and at the same time of light weight and draft. The Ball Bearing adjustment is the simplest and most effective made. The frame is strong and rigid and all working parts are increased to protect them from dust.

Size, inches 14 16 18 20

Each\$5.50 \$7.75 \$9.75 \$12.50

W. & B. "JUNIOR"

Ball Bearing Mower.

This machine is made of high grade material throughout, is strong and at the same time of light weight and draft. The Ball Bearing adjustment is the simplest and most effective made. The frame is strong and rigid and all working parts are increased to protect them from dust.

Size, inches 14 16 18 20

Each\$5.50 \$7.75 \$9.75 \$12.50

W. & B. "JUNIOR"

Ball Bearing Mower.

This machine is made of high grade material throughout, is strong and at the same time of light weight and draft. The Ball Bearing adjustment is the simplest and most effective made. The frame is strong and rigid and all working parts are increased to protect them from dust.

Size, inches 14 16 18 20

Each\$5.50 \$7.75 \$9.75 \$12.50

W. & B. "JUNIOR"

Ball Bearing Mower.

This machine is made of high grade material throughout, is strong and at the same time of light weight and draft. The Ball Bearing adjustment is the simplest and most effective made. The frame is strong and rigid and all working parts are increased to protect them from dust.

Size, inches 14 16 18 20