

Norwest Canoes Inc.

2883 Labelle Blvd.
Prevost, Quebec
Canada J0R 1T0
Tel: (514) 224-2696

Contact: Augustin Gariepy,
President

Products Manufactured

Canvas covered wood canoes in sizes 12 (3.7 m) to 24 feet (7.3 m).

Trade Names

Nor-West

Company Summary

Norwest Canoes Inc. has been building canoes specially adapted for the far north for 40 years. The company's fishing/hunting/prospecting models offer greater carrying capacity than standard canoes because of their durable construction. They are well balanced for portaging and designed for easy paddling and handling. Hundreds of these canoes are still in service after 30 years. Norwest Canoes' freight models can be used with a motor and are extremely rugged and stable for withstanding the diverse conditions of the wilderness.

Nova Kool Mfg. Inc.

5950 Imperial Street
Burnaby, British Columbia
Canada V5J 4M2
Tel: (604) 437-8594
Fax: (604) 437-7452

Contact: Frank Beer,
President

Products Manufactured

AC/DC refrigerators from 2.5 (.07 cu m) to 4.3 cubic feet (.12 cu m) • Icebox refrigeration conversion kits for 12 or 24 volt systems.

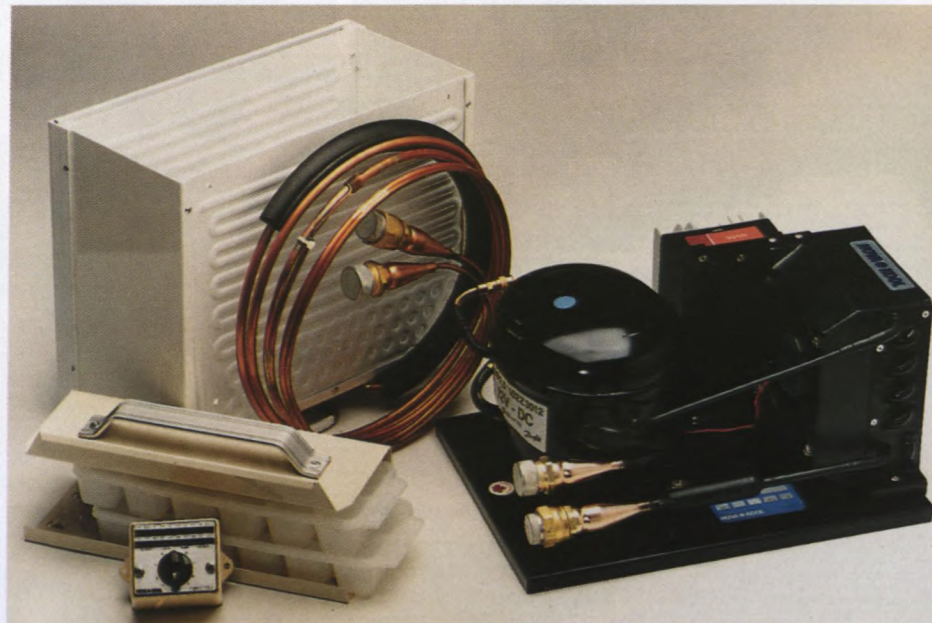
Trade Names

Nova Kool

Company Summary

Nova Kool Mfg. Inc. specializes in the design and manufacturing of refrigerators and icebox conversion kits. The company has its own metal fabrication and plastic and electronic assembly sections. Nova Kool's research department recently developed a refrigerator monitoring device that automatically displays battery voltage and temperature. The company is currently developing a specially-designed refrigerator for the fast food industry.

Nova Kool's conversion system converts an icebox into a refrigerator or even a freezer.

**Okabe Shipyards Ltd.**

P.O. Box 23
Prince Rupert, British Columbia
Canada V8J 3P4
Tel: (604) 624-3070
Fax: (604) 627-8229

Contact: Allan Okabe,
President

Branch Offices

Okabe Cassiar Marine,
P.O. Box 1066
Prince Rupert, British Columbia
V85 4H6

Products Manufactured

Fiberglass 8-1/2 foot (2.6 m) skiff
• 26 foot (7.9 m) fiberglass commercial fishing bowpicker gillnetter.

Trade Names

Stablecraft

Current Export Markets

U.S.A.

Company Summary

The largest ship repair facility in northwestern British Columbia, native-owned Okabe Shipyards Ltd. also designs and builds a cartopper skiff and a fiberglass gillnetter. The company's 50 per cent native crew includes shipwrights, joiners and carpenters, fiberglass, mechanical and hydraulic specialists, steel and aluminum welders.