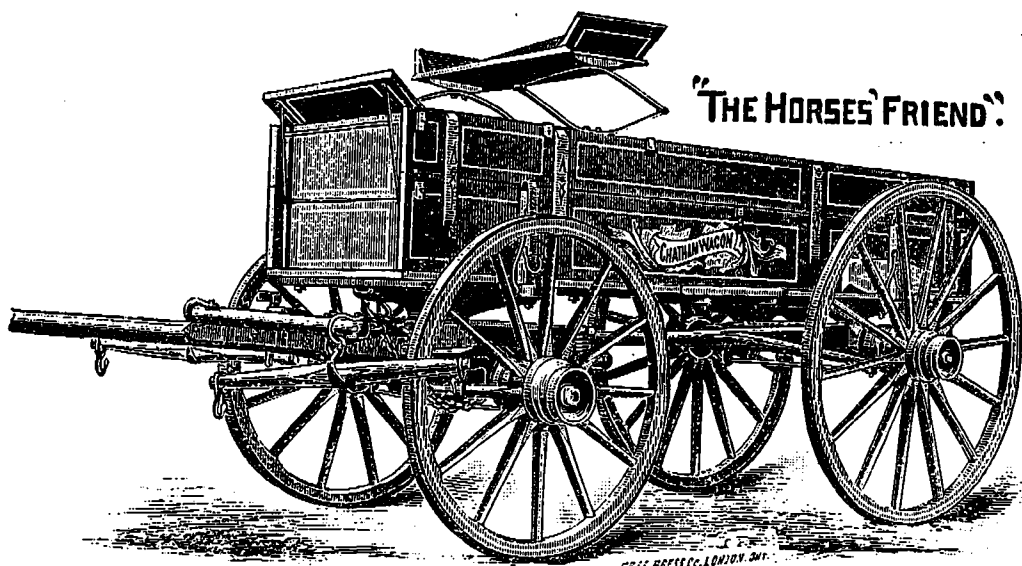


# THE CHATHAM M'F'G CO. (LTD.)

MANUFACTURERS OF

HARDWOOD LUMBER, SHIP PLANK &



**THE CHATHAM WAGON**, of which wagon the above is a faithful cut, and which the Government of the Dominion of Canada has adopted as the **STANDARD WAGON**. We simply ask intending purchasers, in their own interests, to send to us for particulars of the Chatham Wagon, or if there is one convenient closely examine it before purchasing any other.

We also make Railway Platform Baggage Trucks, Farm and other Dump Carts, the Celebrated Main Bob Sleigh, the Patent Champion Hay Rack, etc., etc.

**CHATHAM MANUFACTURING CO., Limited.**

CORRESPONDENCE SOLICITED.

## The Liverpool and London and Globe Insurance Co.

Assets over \$38,000,000.

Rates moderate. Losses promptly settled. Farm Properties insured at Special Rates.

G. F. C. SMITH, Chief Agent, Montreal. JOS. B. REED, Agent, Toronto. ROBERT STRANG, Agent, Winnipeg, Man.

## THE Canadian Bank of Commerce.

HEAD OFFICE, TORONTO.

PAID-UP CAPITAL, \$6,000,000. RESERVE, \$600,000.

**DIRECTORS.**—HENRY W. DARLING, Esq., President; GEO. A. COX, Esq., Vice-President; Jas. Crathern, Esq., W. B. Hamilton, Esq., Wm. Gooderham, Esq., John I. Davidson, Esq., Matthew Leggat, Esq., George Taylor, Esq.

B. E. WALKER, Gen. Manager; J. H. PLUMMER, Asst. Gen. Manager; A. H. IRELAND, Inspector.

NEW YORK.—Alex. Laird and Wm. Gray, Agents.

**BRANCHES.**—Ayr, Barrie, Belleville, Berlin, Blenheim, Brantford, Chatham, Collingwood, Dundas, Dunnville, Galt, Goderich, Guelph, Hamilton, Jarvis, London, Montreal, Norwich, Orangeville, Ottawa, Parkhill, Paris, Peterboro, St. Catharines, Sarnia, Seaforth, Simcoe, Stratford, Strathroy, Thorold, Toronto, Walkerton, Windsor, Woodstock.

Commercial credits issued for use in Europe, the East and West Indies, China, Japan, and South America.

## THE Standard Bank of Canada.

Capital Paid-up - - - \$1,000,000  
Reserve Fund - - - 380,000

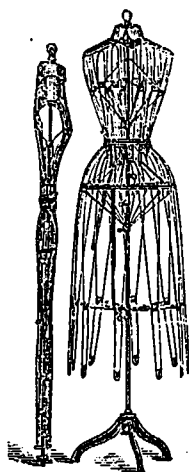
HEAD OFFICE - - - TORONTO.

**DIRECTORS.**  
W. F. COWAN, President. JOHN BURNS, Vice-President.  
W. F. Allen. Fred. Wyld. A. J. Somerville.  
A. T. Todd. Dr. G. D. Morton.

**AGENCIES.**  
Bowmanville. Campbellford. Durham. Newcastle.  
Brantford. Cannington. Forest. Parkdale.  
Bradford. Chatham, Ont. Harriston. Picton.  
Brighton. Colborne. Markham.

**BANKERS.**  
New York and Montreal—Bank of Montreal.  
London, England—National Bank of Scotland.  
All Banking business promptly attended to. Correspondence solicited.  
J. L. BRODIE, Cashier.

In writing our advertisers, please mention MASSEY'S



## MAGIC SCALE AGENCY,

426½ YONGE STREET.

Best Tailor System of Cutting.

## MISS CHUBB,

General Agent for Ontario, also Agent for the Universal Perfect-Fitting Patterns, very stylish, moderate prices.

Catalogues free.

ADJUSTABLE WIRE AND WICKER DRESS STANDS.

Best Tape Measures, Measure Books, Tracing Wheels, and other requisites always on hand; also a large stock of the best Adjustable Dress Forms for draping, etc., at the lowest prices.

MISS CHUBB,

426½ Yonge St., Toronto, Ontario.

## For Musical Merchandise

of every Description

Write or send to



**CLAXTON'S MUSIC STORES,**

197 Yonge St.,  
63 King St. W.  
TORONTO.

Catalogues free on application. Twenty years in business.

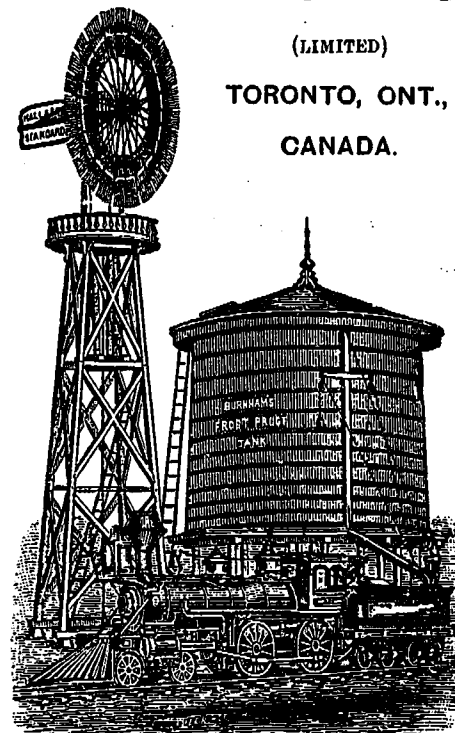
ILLUSTRATED and it will insure prompt attention.

## ONTARIO PUMP CO.

(LIMITED)

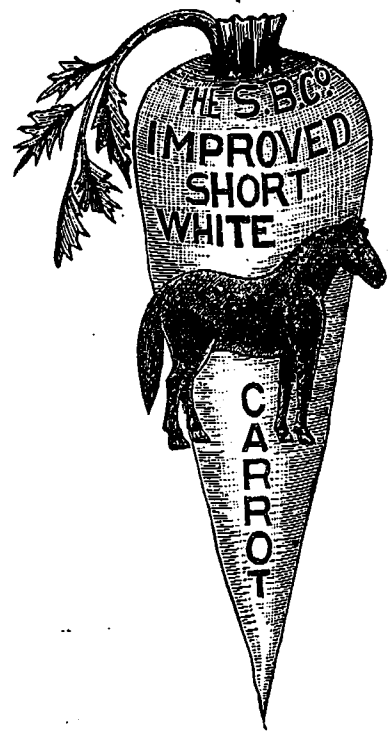
TORONTO, ONT.,

CANADA.



Manufacturers of Wind Mills, Feed Grinders, Haying Tools, Iron and Wood Pumps, and a full line of Railway, Town, Farm, and Ornamental Water Supply Materials.

Geared Windmills for driving machinery, pumping water, etc., from 1 to 40 horsepower. Send for Descriptive Catalogue.



**THE STEELE BROS. Co. Ltd.** SEED MERCHANTS, CHANTS, TORONTO.  
offer the following specialties for season 1889. S. B. & Co's New Short White Carrot, the heaviest cropper known; S. B. & Co's Selected Sweet Corn, grows magnificent roots; S. B. & Co's Prolific Sweet Ensilage Corn, 50 tons per acre, 15 ft. high. Send your address for copy of our illustrated Catalogue of these and many other novelties. It will pay you.

DELICIOUS AND NOURISHING

**ROYAL DANDELION COFFEE,**

Prepared only by **ELLIS & KEICHLLEY, TORONTO.**

## FARM LOANS.

**CREDIT FONCIER FRANCO-CANADIEN.**

CAPITAL, \$5,000,000. HEAD OFFICE, MONTREAL.

OFFICE ONTARIO DIVISION:—28 Wellington St., Toronto.

This Company lends on good farm property at lowest current rate of interest and on favorable terms. For information apply to local agents, or to

W. E. LONG, Manager, Toronto.

## EDUCATIONAL SCHEME

TO FARMERS' SONS.

The Fifth Annual Examination in Agricultural Education will be held as usual in the High Schools in July, 1889. Those desirous of reading for this Examination can get circulars as to course of study by applying to H. WADE, Secretary Agriculture and Arts Association, Toronto.