

AN ENGINE possessing the qualities of
and Even Regulation, Easy to Operate, Needing Few Repairs,
steam plant operators. These essentials are embodied in the W.
STEAM ENGINES made by : : : : : :

WE MAKE Wheelock Engines, Ideal Engines, Gas and
Gasoline Engines, Boilers, Water Wheels, Pumps, Flour
Mill Machinery, Oat Meal Mill Machinery, Oat Meal
Steam Pan Kilns, Wood Working Machinery, Iron Pul-
leys, Wood Rim Split Pulleys, Shafting, Hangers, Gearing,
Friction, Clutch Pulleys, Friction Clutch Couplings, etc.,
Safes, Vaults and Vault Doors.

THE GOLDIE & McCULL
GALT, Ont., Cc

LEONARD - CORLISS Engines

For all power purposes.

The **CORLISS ENGINE** is without question the most
economical. Universally acknowledged as the peer of all slow
speed engines. All Engines have multiported valves.

The **PEERLESS Self Oiling ENGINE** is the most per-
fect high speed engine in existence, there is nothing about the
engine which has not been a proved success.

Boilers for all powers and purposes. **Heaters, Pumps.**

CORRESPONDENCE SOLICITED.

E. LEONARD & SONS, - Manufacturers
London, Canada

Montreal, P.Q. Winnipeg, Man. St. John, N.B.

THE WELLINGTON
London, England
GENUINE EMERY

Oakey's Flexible Twilled Emery Cloth.

Oakey's Flint Paper and Glass Paper.

Oakey's Emery Paper, Black

Prize Medal and Highest Award Philadelphia, 1876,
for Superiority of Quality, Skilful Manufacture, Sharp
Durability, and Uniformity of Grain.

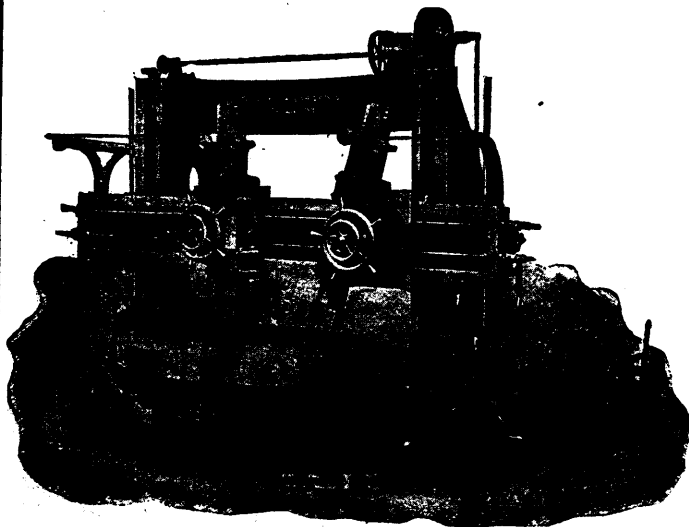
Manufacturers

JOHN OAKEY & SONS, Limited, Wellington Mills, Westm.
Bridge Road, London.

Enquiries should be addressed to

JOHN FORMAN, - 650 Craig St., MONTREAL

IMPORTANT BORING and TURNING MILLS
TO USERS OF



NOTICE— The above mill can be seen at our Works and is
of the **latest modern type**. If you are a
buyer please communicate with us. **Instant delivery**
can be given. Full particulars sent on receipt of wire or
letter.

WE are ready to delivery from **STOCK** one
of our 84" Boring and Turning Mills,
having two regular heads with positive geared
feeds, each head being entirely independent in
all its movements, making it adaptable to either
light or heavy work within its range. Every
part of the machine is manufactured after the
most approved methods, and in placing a tool of
this kind in your shop you are getting a machine
suitable for your wants if you wish to make the
most of your boring mill work. A greater range
of work can be done on a mill of this character
than any other kind of tool, so that the floor
space occupied by Bertram mills always pays
dividends.

THE JOHN BERTRAM & SONS CO., Limited, - Dundas, Ontario