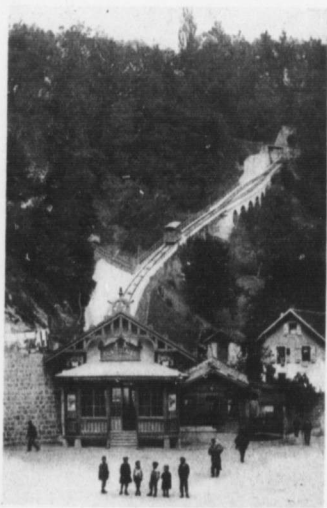


take the place of towns and villages which are so numerous on the Swiss side.

The great beauty of the lake, the picturesque aspect of its banks and the varied splendors of the mountains fully justify the preference of tourists for the shores of this charming sheet of water. To those whom the life of a city fatigues, and yet who do not wish to exile themselves too far from literary,



THE FUNICLAIRE RAILWAY.

artistic, and commercial centres, the shores of Lake Geneva afford all the pleasures of a country watering place with proximity and different resources of city life. Geneva and Lausanne, beautiful towns, may be reached easily from any point on the lake.

The City of Geneva is situated at the south end of the Lac Leman. The

Rhone divides the town into two parts; on the left bank lies the old town—the Geneva of Calvin, with its hilly streets ascending to the Cathedral terrace. The newer part of the city is on the right bank, and is called the Quartier St. Gervais. Since the removal of the old fortifications, however, both parts of the city have extended with great rapidity, so that to-day we see the new Geneva; the industrial, artistic, intellectual Geneva, which devotes the better part of its revenue to the education of its children; an opulent and lettered city, justly proud of its great university establishments and of its magnificent collections; a palatial city, whose superb edifices are mirrored in the waters of the lake. When to these charms are added those of historic interest—the history of the Reformation, and of the long struggles between the Republic and the Duke of Savoy—we can understand, in part, the enchantment that brings tourists again and again to this eminently attractive place.

Leaving Geneva the tourist may proceed by steamer to Ouchy and thence by a funicular railway to Lausanne. The latter city occupies a commanding situation on the terraced slopes of Mont Jorat. Lausanne, with its steep, hilly streets, and its three terraces, separated by deep ravines, is extremely attractive and is a favorite resort of tourists.

From Lausanne to Bern the traveller is kept in a constant state of excitement by the great beauty and variety of the Alpine scenery. As the train winds its way across the broken country, we catch glimpses of small streams in which are reflected the rugged outlines of the overhanging banks; anon we see the Swiss laborer struggling to gather his