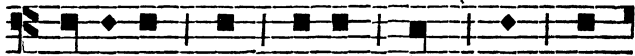
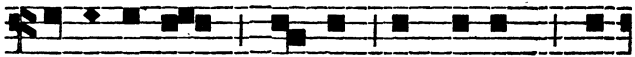


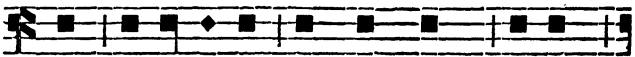
na-nu. *Ps.* Ush-am nas-pits sha-tshi-



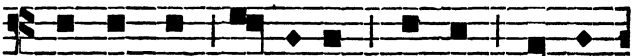
ta-ga-nu ka ta-in tshil ka ti-



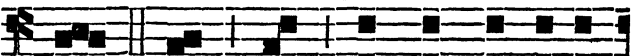
pe-ri-mi-ats ; nas-pits mus-te-nam tse-



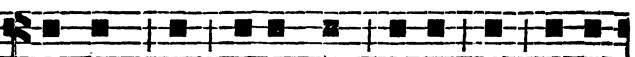
kat po-ni-pa-lo nta-tsha-kush es-pits



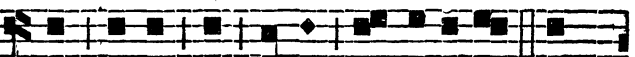
sha-tshi-tat e-ta-lits tshi-je ma-ni-



to. Tshi ma tshi-tshi-tua-ue-li-



ma-gant ka o-kus-sit ki-e ka ot-ta-



ut ki-e ka mi-lo ma-ni-to-ut. Esh-



pish tshi-tshi-tua-ue-li-ma-ga-ni-pan