

Handkerchiefs

Handkerchiefs. A
little time ago. We
half of what they
day.
each.

Neck Ties.

of Gent's Ties suit-
s.

Kid Gloves

ver from last season,

\$1.40 pair.

Gloves.

Boys' and Men's, in a

ED PRICES.

THAT IMPROVES
GE.

AN'S

Port Wine.

CO., Ltd.,

Street,

ne Merchants.

ay purchased

ds of this
PORT WINE,

nearly

f 1 doz. each,

orders for immediate
ext 2 weeks, for Cases,
is the time to avail of
hase while there is yet
age and keeps on im-

our stock of

ng and Still.

Gins, Ales, Stouts
eurs.

of during the next

eks.

rding Now,

ll too late.

HUBBARD

or Engines.

Sturdy, Reliable
rs, operating cheer-
on Kerosene.

Hubbard is the
man's Engine.
terms.
St. John's.



SHOP EARLY, PLEASE!

It is the consensus of opinion among the managers of the stores that the people cannot be too strongly urged to do their Christmas shopping early. In the first place, the Christmas stocks are now all in and the early buyer has the advantage in the matter of selection. Shop Early, Please!

Don't DELAY!

Extraordinary BARGAIN
SPECIALS suitable for
Christmas Gifts, inl

Gem Rings, Cuff Links,
Brooches, Tie Pins,
Pendants, Fobs,
Neck Chains, Watches,
Ear Rings, Signet Rings,
Lockets. Etc., Etc.

D. A. McRAE,
Jeweller.

THE SUCCESS OF YOUR
Christmas Baking

IS ASSURED IF YOU USE

Royal Household

OR

Windsor Patent.

Especially recommended for Cake Making.

A Mld. Doctor in China

Rev. A. E. Armstrong, M.A., As-
sistant Secretary of the Foreign Mis-
sionary of the Presbyterian Church,
writing to a Canadian Church paper
says:

"At a recent meeting of the Board
of Foreign Missions, estimates for
1917 for the work in our eight over-
seas missions were considered. It
was a heart-breaking task to have to
refuse funds for so much needy
work. One of the buildings most ur-
gently needed is a small hospital at
Yong Jung, China, over the Man-
churia border in our Korean Mission.
Dr. Stanley H. Martin who has not
only had a splendid course in medi-
cine and surgery, but had the unusual
and valuable experience of several
summers with Dr. Grenfell on the La-
rador coast, reached Yong Jung in
February, 1916, to begin his work of
language study in preparation for
medical missionary service."

The sum of \$4,000 is needed to
erect a hospital at Yong Jung but un-
fortunately the Mission Board could
not grant the request owing to there
being no fund available.

As showing the great need of such
an institution we may say that Dr.
Martin treated 3,500 patients from
Feb. 15th to June 15th, 1916. Dr.
Martin is assisted in his work by his
young wife, who is a fully trained
nurse. Part of her duties were to
prepare patients for operation, which
has to be performed with but one-
eighth the number of instruments re-
quired. The Chinese magistrate at the
place mentioned has offered to help
the hospital work. A disease known
as beri beri broke out at this station
and before it could be checked thirty
persons died. Dr. Martin is greatly
handicapped in his work for the want
of suitable building and equipment.
Anyone interested in helping to pro-
vide this hospital should communi-
cate with the Secretary Foreign Mis-
sion Board, Confederation Life Bldg.,
Toronto.

Dr. A. H. Martin is the eldest son of
A. W. Martin, Esq., G. P. O. His brother
Private William is with the Nfld.
Regiment.

"ARE WE DOWNHEARTED—NO."
The British Army's new marching
song, words and music by Robert
Barkness, 49c. post paid. All the
latest and popular Army and Navy
Patriotic Songs at GARLAND'S
BOOKSTORE, 177-9 Water Street, St.
John's.—now<

Random Reels.

BEER.

Beer is a cold, cheering lubricant
which is getting almost as hard to
find as a tooth brush in Mexico. A
strong prejudice has sprung up
against beer as an uninterrupted be-
verage, and many of our leading poli-
ticians do not use it except for medi-
cal purposes or immediately after
election. Some of our best politicians
have weak stomachs and find that a
few quarts of beer taken in a thought-
ful manner before breakfast gives
them new strength and courage coup-
led with a velvety, sostenuto hic-
cough.

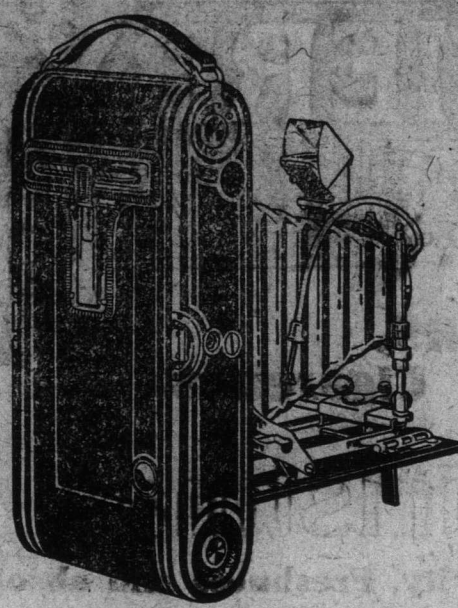
Beer is composed of barley, a
small quantity of alcohol and seven
inches of sea foam. It is made in
large buildings and shipped by ex-
press to people who prefer to have it
come under an assumed name. For a
long time beer was sold over the
bar, but in many States the saloon has
been requested to withdraw and make
way for liberty. This has been a great
boon to the express companies and
has also helped the local merchant to
get part way down the alphabet with
his book accounts.

Beer is a mild drink, compared to
whisky, and produces a different kind
of headache. There is something
about the human system which pre-
vents it from absorbing whisky with
the lager, sponge-like enthusiasm of
the trained beer drinker. The chief
products of whisky are crime, poverty
and automobile accidents, and nobody
tries to defend it when he is sober.
The only thing whisky is good for is
snake bite, and snakes are getting
scarcer every year.

Beer has never hurt anybody who
didn't want to swim in it, but the
trouble is that lots of people wade out
to far. It is so with tobacco and
coffee and dill-pickles and plum olives.
The safest way is to fall back on but-
termilk, which never yet caused a
man to want to drive eighty-five miles
an hour on a crooked turnpike or sent
him home to his family without a
dip in his pocket or a sensible
thought in his head.

AT THE CRESCENT.

The Knickerbocker Star features
present "Paying the Toll," at the Cres-
cent Picture Palace to-day. Grace
Hall and Horace Stannage feature in
this great three reel drama. A most
interesting reel is to-day's issue of the
"Ford Canadian Monthly," Canada's
greatest topical. Blanche Reeves and
Katie Reynolds feature in "Dashful
Billie" one of the funniest, Regatta
comedies. Professor McCarty plays
a new and classy musical programme
for this big week opening show.



3 A Autographic Kodak,

Making Pictures Post Card Size.

PRICE \$25.00.

KODAK--A Gift you know they want.

Made in factories where honest workmanship has become
a habit, sold by a store you have learned to depend upon

Kodaks from \$6.90 up. | Brownie's from \$1.40 up.

TOOTON'S,

THE KODAK STORE.

Headquarters for Camera and Photo Supplies, 320
Water Street.

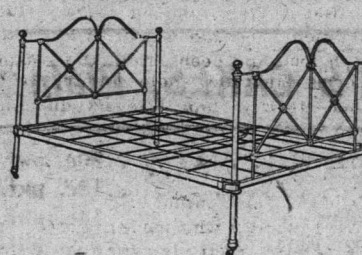
OUR ANNUAL DECEMBER SALE

**Of White Enamel and Brass Bedsteads, Blankets, Bed-
springs, Pillows, Mattresses, and Bedroom Furniture
starts on Thursday, D. C. 14th, and will last until
the End of the year.**

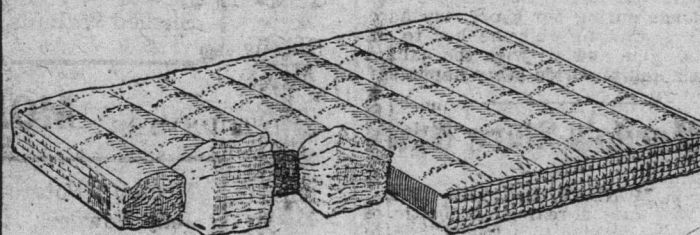
No matter what your tastes run to in Bedsteads, you can come to us with implicit
confidence in the quality of our goods and in our ability to give you what you want.

**OUR DISPLAY of BEDSTEADS is second to none in Saint
John's in point of Quality and Beauty. We Beat
Them All for LOW PRICES.**

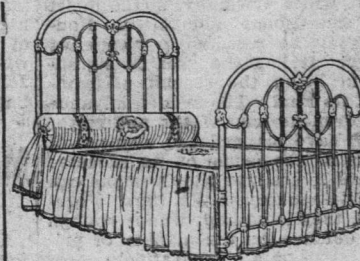
WHITE ENAMEL BEDSTEAD.



With laths, all sizes; guar-
anteed. Reg. \$7.00.
Our Price, \$6.25



Our MATTRESSES are all guaranteed. We
have them in stock, all sizes and qualities, from
\$2.00 to \$20.00.



White Enamel BED-
STEAD, suitable for
spring. Reg. \$20.00
for \$16.00.

ALL WOOL BLANKETS REDUCED TO CLEAR.

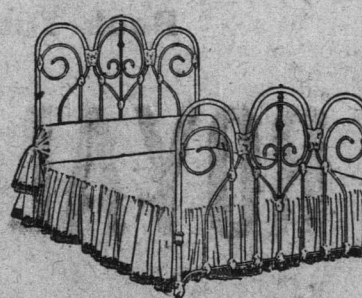
Regular \$6.50 for \$5.50
Regular \$9.00 for \$7.90
Regular \$11.00 for \$9.25
Regular \$13.00 for \$10.80

WIRE SPRING MATTRESSES.

All sizes and every one guaranteed.
Bought before the advance in prices.
Regular \$4.00 for \$3.75
Regular \$3.50 for \$3.15
Regular \$5.50 for \$4.90

PILLOWS.

We make a specialty of mak-
ing good Pillows.
5 lbs. loose Pillow for . \$1.50 pair
6 lbs. loose Pillow for . \$1.80 pair
Duck Pillows \$6.00 pair



A beautiful White Enam-
el BEDSTEAD, suitable
for spring and laths. Re-
gular price \$19.50 for
\$17.50.

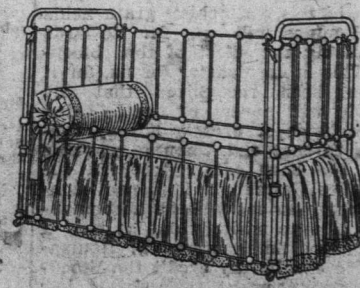


Bedroom Furniture.

We protect you on ev-
ery purchase. We carry
Bedroom Furniture in the
following makes: Surface
Oak, Mahogany, Trenford
Oak and Rosewood, at the
old prices.

Children's Cots

With sliding sides.
Regular \$11.00 for \$9.40
Regular \$15.00 for \$13.00



All the above Goods we bought before the advance in prices, also the advance in
freights. Therefore we can sell **Cheaper than any concern.**
Put your mind at rest by buying at

CALLAHAN-GLASS CO., Limited,

THE BIG FURNITURE STORE,
On THEATRE HILL and DUCKWORTH STREET.

ADVERTISE in THE EVENING TELEGRAM.