

For MINES, Ships, Dairies, Paper Mills,
Gas Stations, etc.—every type of
LIGHTING FITTINGS

The "Wigan" line—Manufactured by Heyes & Co. Ltd., Wigan, England

- Prismatic lights
- Pit lights
- Bulkhead lights
- Underwater lights
- Explosion-Proof fixtures
- Well-glass fittings

These Fixtures are Stocked in Canada by J. R. Longstaffe Ltd.
Catalogue No. F3 upon request.

J.R. LONGSTAFFE, LTD.

187 Duchess Street

Toronto, Ontario

INVESTIGATE THESE
LITTELFUSE PRODUCTS



NEON TATTELITES "They Tell the Tale." Tests for blown fuses, open circuits, live lines, etc. Indicates polarity, whether AC or DC, radio frequency and static. Price only \$1.00.

DED-FUSE TATTELITE tells which fuse is blown and where—*instantly*.

TATTELITES are made in voltage ranges to 2,000 volts. They by-pass lightning surges and inductive surges in DC magnets, solenoids, shunt and compound motors, etc.

INSTRUMENT LITTELFUSES. Low range precision fuses for protecting galvanometers, instruments, test sets, etc. 1/200 amperes and up. Guaranteed to prevent burnouts.

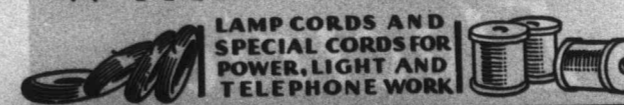
HIGH VOLTAGE LITTELFUSES. Renewable—for low ampereage high voltage service, up to 10,000 volts.

Write for Instructive Catalog and name of nearest Canadian Distributor.

LITTELFUSE LABORATORIES
4517 Ravenswood Ave., Chicago, Ill.



**RUBBER COVERED
WIRES & CABLES**



**BOSTON INSULATED WIRE
AND CABLE CO. LIMITED**
HAMILTON, CANADA

Electrical News and Engineering—April 15, 1935

23

MADE IN
CANADA

SKF

BALL BEARING HANGERS

Save Power . . . Lubricant . . .
Maintenance Costs . . . Prevent
Hot Boxes . . . Eliminate fire hazard.

CANADIAN SKF COMPANY LIMITED
MONTREAL TORONTO WINNIPEG VANCOUVER

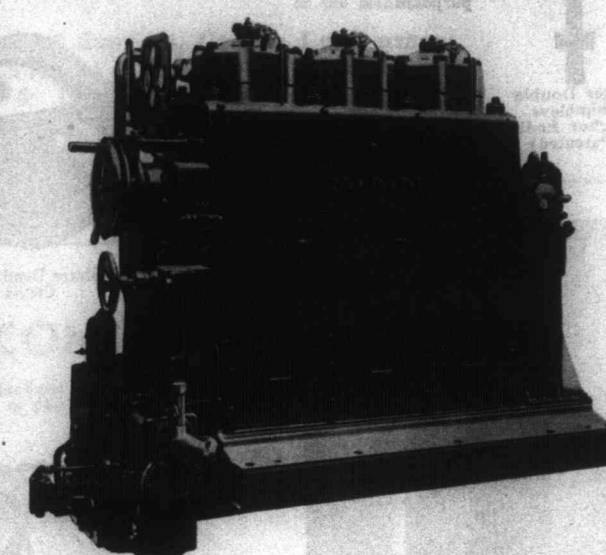
Electrical News and
Engineering

M A N
DIESEL ENGINES

Single and Double Acting
2 and 4 cycle

STANDARD MODELS

D type, 60-150 HP. to 2200 RPM.
WV type, 50-1000 HP. to 1500 RPM.
GV type, 60-3000 HP. to 600 RPM.
GZ type, 250-4000 HP. to 400 RPM.



3 cyl. Gz single acting 2 cycle
100-125 HP. per cylinder

With patent loop scavenge and oil cooled
pistons

The latest Diesel development

Incomparably Superior
for Marine and Stationary use.

Particulars from

HENRY McNEIL TAINSH AND ASSOCIATES
TORONTO MONTREAL

MEIGHEN PAPERS, Series 5 (M.G. 26, I, Volume 206)

PUBLIC ARCHIVES
ARCHIVES PUBLIQUES
CANADA