

Empress Louise Papeteries



YOUR correspondence should convey precisely the same impression as everything else you do. Therefore, your notes and letters should be written on dainty stationery.

Empress Louise Papeteries

are of the daintiest.

Supplied in delicate tints of green and azure as well as white.)

Ask your stationer for a box.

10-7-17

BRANTFORD
WINNIPEG

Barber-Ellis
Limited.
Canada.

VANCOUVER
CALGARY

CHESS

Conducted by MALCOLM SIM

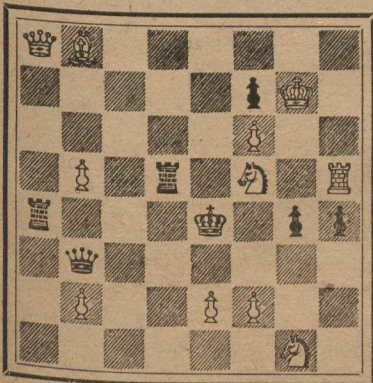
Solutions to problems and other correspondence for this department should be addressed to the Chess Editor, Canadian Courier, 30 Grant Street, Toronto.

PROBLEM No. 148 by G. Heathcote.

Hvar 8 Dag Tourney, 1913.

(A Gem).

Black.—Seven Pieces.



White.—Eleven Pieces.

White to play and mate in three.

SOLUTIONS.

Problem No. 146, by B. Huelsen.

1. R-Q6, PxR; 2. P-B4ch, any move; 3. Q or Kt mates.
1. ... P-B4; 2. P-B4ch, any move; 3. Q or Kt mates.
1. ... B-B6; 2. Q-K3ch, KxR; 3. QxKP mate.
1. ... KxR; 2. Q-Q4ch, K-B2; 3. QxKt mate.

We call special attention to our No. 148 above, a beautiful and accurate work by England's, and in our opinion, the world's premier composer.

TO CORRESPONDENTS.

J. R. Ballantyne.—Pleased to hear from you again. Thanks for solution. Hope your gallant relative will become interested.

CORRESPONDENCE CHESS.

An interesting game played in England in the Kitchen Memorial Correspondence Tournament. Notes from the Sheffield Weekly News.

Queen's Pawn Offering.

White.	Black.
G. W. Moses.	J. Orange.
1. P-Q4	1. P-Q4
2. Kt-KB3	2. P-QB4
3. P-B4	3. P-K3
4. Kt-B3	4. Kt-KB3
5. PxQP	5. KtxP (a)
6. B-Kt5	6. KtxKt
7. PxKt	7. P-B3
8. B-Q2	8. Kt-B3 (b)
9. P-K3	9. B-Q3
10. B-Q3	10. Q-K2
11. Castles	11. P-QKt3
12. P-K4 (c)	12. P-K4 (d)
13. P-Q5	13. Kt-Qsq.
14. P-QR4	14. Kt-Kt2
15. B-Kt5ch	15. B-Q2
16. Q-K2	16. Castles KR

17. Kt-R4	17. B-Bsq
18. P-Kt4	18. P-Kt3
19. Kt-Kt2	19. R-B2
20. B-Q3	20. B-Q2
21. KR-Ktsq	21. R-Ktsq
22. Kt-K3	22. P-B4 (e)
23. KtPxP (f)	23. PxP
24. KtxP	24. BxKt
25. PxP	25. P-B5
26. B-K4	26. Kt-B4
27. P-B3 (g)	27. Kt-Q6
28. K-Rsq	28. Q-R5
29. R-Ktsq ch (h)	29. K-Rsq
30. QR-KBsq	30. R-Ktsq (i)
31. RxRch	31. KxR
32. R-Ktsq ch	32. R-Kt2 (j)
33. RxRch	33. KxR
34. Q-Kt2ch	34. K-B2! (k)
35. Q-Kt3	35. Q-R4
36. P-R4	36. B-B4
37. Q-Kt5	37. QxQ
38. PxQ (l)	38. Kt-Kt7
39. B-B2	39. P-QR3
40. K-Kt2	40. B-Q3
41. B-Bsq	41. B-R6 (m)
42. K-Kt3!	42. P-Kt4
43. PxP	43. PxP
44. P-B6	44. P-R3
45. PxP	45. KxP
46. B-Kt5ch	Resigns (n)

(a) PxP would bring about an ordinary variation of the P-QB4 defence to the Queen's Gambit Declined.

(b) Preventing P-K4, but only for a move or two.

(c) White has now the advantage in position, and is bound to obtain a passed Pawn.

(d) It strikes us, however, that PxP would be a better move. If White retook with the Pawn, and then pushed his Queen's Pawn forward the passed Pawn he obtains would be an isolated one.

(e) Black is very much on the defensive, and seeks relief in a counter attack, which is very ingeniously carried on, and also very ably met. He is compelled to begin by sacrificing a Pawn. It would be better if he could first play QB-KBsq, but the piece would soon be dislodged by B-R6.

(f) Of course, if 23. KPxP, Black recovers the Pawn with interest, by 23... P-K5, etc.

(g) Avoiding a clever trap. If 27. QxP, then 27... Q-R5! with a very dangerous attack, for if now 28. B-Q3, the reply would be 28... P-K5, and if any other move, Black could at least get his Pawn back at once by 28... RxP.

(h) White has been well advised in not capturing the Knight. He now takes the attack in turn.

(i) Not 30... R-B4, because of 31. BxKt, followed by 32. QxPch.

(j) If 32... K-Rsq, then 33. BxKt, PxP; 34. Q-Kt2 wins.

(k) Another tricky position. If 34... K-R3, White wins by 35. BxKt, PxP; 36. Q-Kt8.

(l) White has an overwhelming superiority now. The concluding moves are highly interesting.

(m) With a view to 42... Kt-Q8; 43. BxB, Kt-K6ch. White's reply prevents this, and both Black's pieces become fixtures.

(n) For if 46... KxB, then 47. P-R7, and wins. Or if 46... K-B2; 47. P-R7, K-Kt2; 48. B-B6ch, and wins.

The photograph used on the cover this issue is by Wm. James & Son, Toronto.

RIMROCK JONES

(Continued from page 24.)

"That's right," he agreed and his eyes opened wider as he took her all in, once more. "Say, was that the reason you were saving your money?" he asked as he glanced at the ear-phone. "Because if I'd a-known it," he burst out repentantly, "I'd never touched it—no, honest, I never would."

"Well, that's all right," she answered frankly, "we all take a chance of some kind. But now, Mr. Jones, since we understand each other, don't you think we can afford to be friends?"

She rose smiling and back into her eye came that look he had missed once before. It came only for a moment—the old, friendly twinkle that had haunted his memory for months—and as Rimrock caught it he leapt to his feet and thrust out his great, awkward hand.

"W'y, sure," he said, "and I'm proud to know you. Say, I'm coming around again."

(To be Continued.)

DEBENTURES

ISSUED IN SUMS OF \$100 AND UPWARDS

For terms of One or more years.

Interest paid half-yearly.

Interest computed from the date on which money is received, at a rate varying according to the term for which the debenture is issued.

THESE DEBENTURES ARE A LEGAL INVESTMENT FOR TRUST FUNDS.

They are a favorite investment of Benevolent and Fraternal Institutions, and of British and Canadian Fire and Life Assurance Companies, largely for deposit with the Canadian Government, being held by such institutions to the amount of more than ONE AND A HALF MILLION DOLLARS.

We shall be glad to mail a specimen debenture, copy of annual report, and any further information desired, to any who send us their address.

CANADA PERMANENT MORTGAGE CORPORATION

TORONTO STREET, TORONTO

Established 1855.

"Your Car's Burnt Up!"

Shake hands with yourself if you have one of our policies with liberal features.

Costs little for ample protection.

See about it to-day. Drive around to our agent.



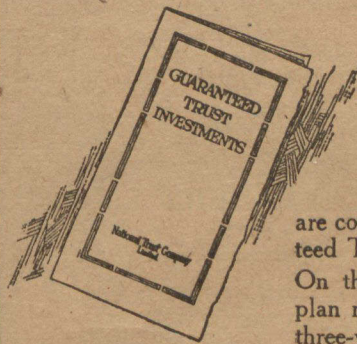
LONDON MUTUAL FIRE INSURANCE COMPANY

F. D. WILLIAMS, Managing Director
Head Office—33 Scott Street, Toronto

PATENTS AND SOLICITORS.

FETHERSTONHAUGH & CO., Patent Solicitors, head office, Toronto, and Ottawa. Booklet on Patents free.

Details of a Safe Investment



are contained in our Booklet, "Guaranteed Trust Investments," shown above. On the Guaranteed Trust Investment plan moneys are entrusted to us for a three-year period or for one of five years. Such funds are invested by us for the most part in carefully selected first mortgages on improved real estate. Sums of \$500 and upwards are accepted and interest at the rate of 5 per cent. per annum is paid by cheque half-yearly.

We are glad to mail a copy of the booklet anywhere on request.

National Trust Company Limited

Capital Paid-up,
\$1,500,000

Reserve,
\$1,500,000

18-22 KING STREET EAST, TORONTO.