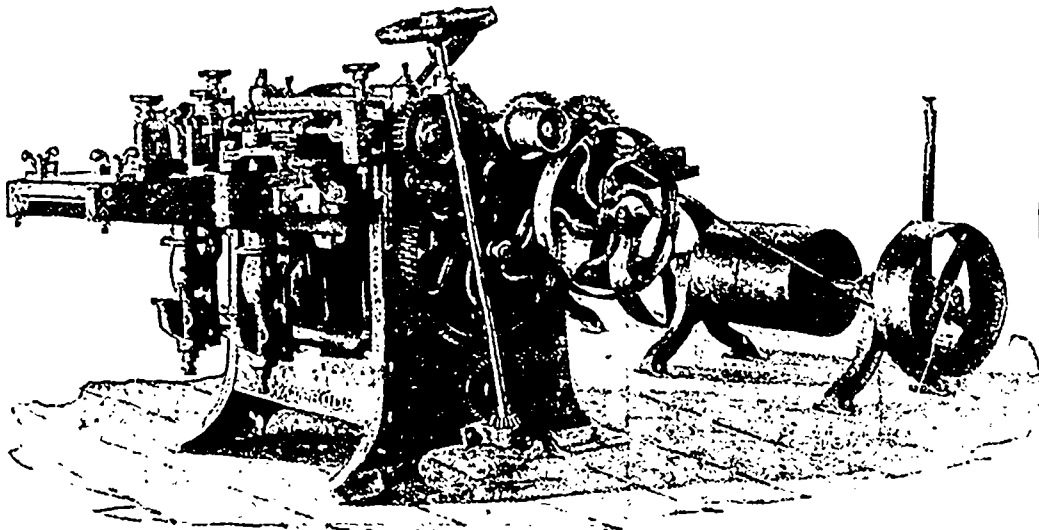
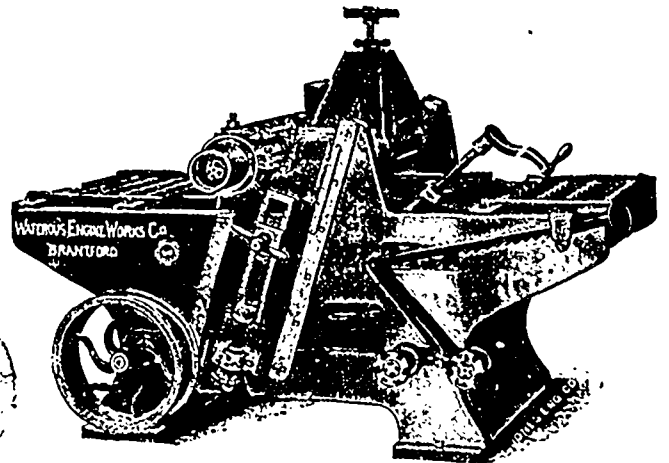


# WOOD-WORKING MACHINERY

Suitable for  
... Saw Mills

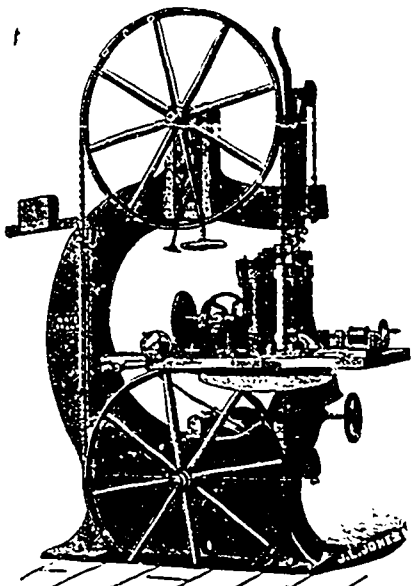


**THE ECONOMIST** PLANER, MATCHER AND MOULDER.—Mandrel Double-Belted—all Feed-Rolls Driven—Strong, Powerful Feed.



**ENDLESS BED SURFACER**

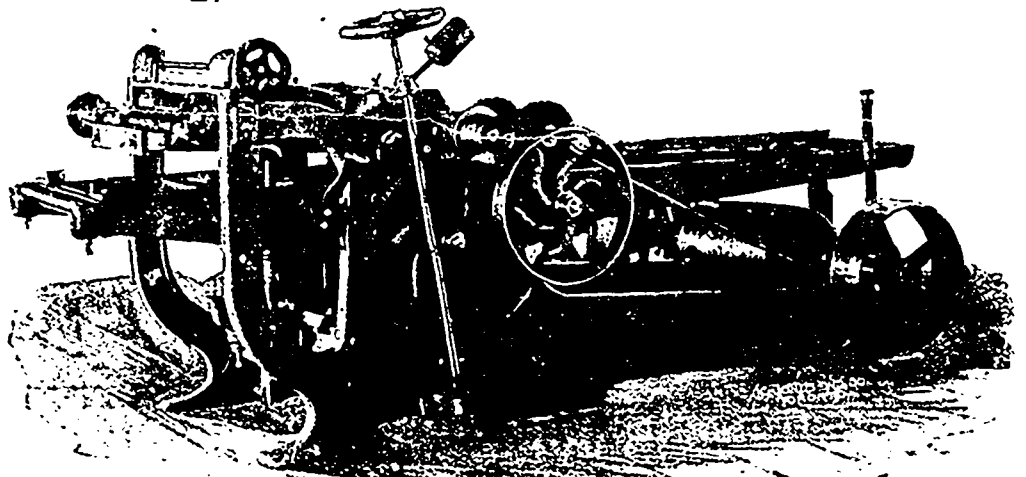
Single and Double Cylinder—a Positive Fast Feed for Green, Wet or Icy Lumber—Very Suitable for Saw Mills that ship Planed Lumber.



NO. 4 BAND RE-SAW.

## Band Re-Saws

from No. 4  
Weight - 2,750  
for  
Planing  
Factories  
to  
No. 8—12,500  
for the  
Heaviest  
Re-Sawing  
in Slabs,  
Deals, &c.

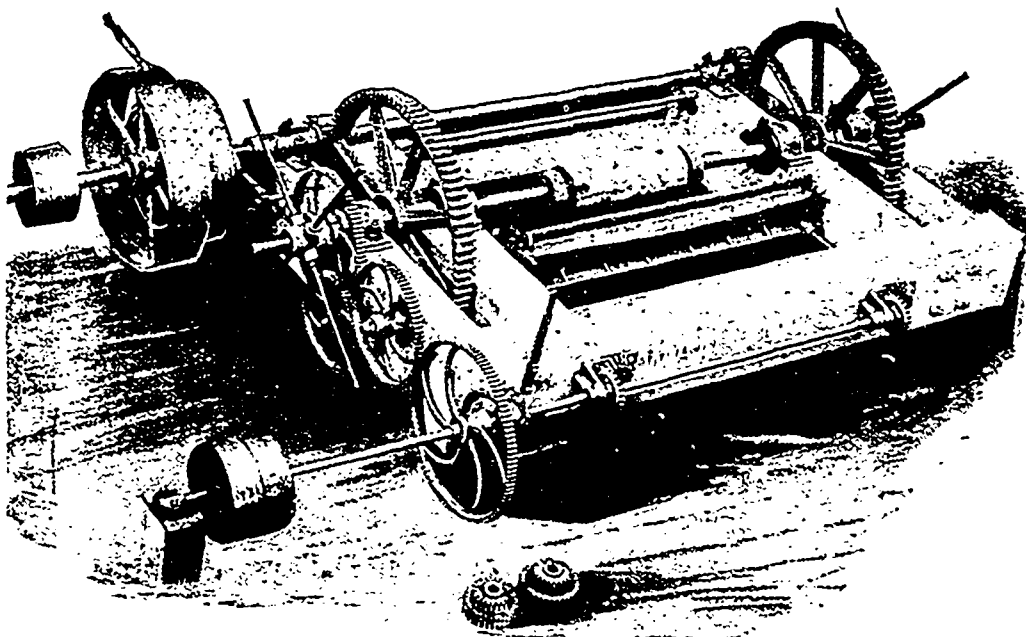


**THE CHAMPION** PLANER, MATCHER AND MOULDER, with Extended Frame and Table.—Mandrel Double Belted—all Feed-Rolls Driven—a Heavy, Fast and Very Popular Machine.

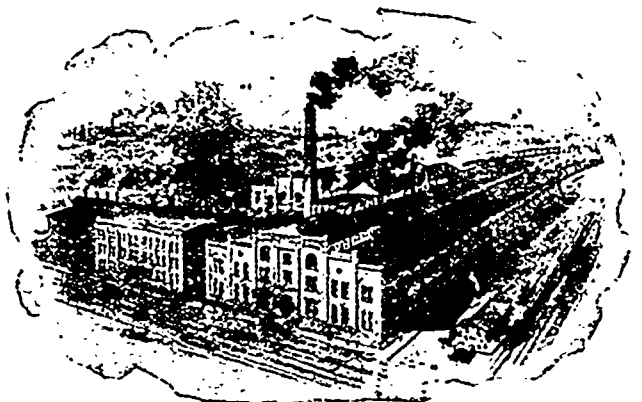
## RE-BUILT MACHINES

One Re-Built Egan Band Re-Saw, ready to ship; Wheels, 60 in. diameter; Lower Wheel Solid Disc; uses Saws up to 6 in. wide, 31 ft. long. Has been in use in a saw mill re-sawing slabs and lumber. Was replaced with a Heavy Band Re-Saw of our make. This Machine is ready for immediate shipment.

One No. 1 Veneer Machine; practically new; been used two weeks experimenting with a new product. Is in thorough order, ready to ship.



**VENEER OR PEELING MACHINE** Shown peeling a very short log.—No. 1 takes a log 5 ft. x 48 in.; No. 2, 6 ft. x 48 in.—Makes any thickness of Veneers—Handles nearly all Soft Woods without Steaming—a Very Profitable Addition to a Saw Mill.



EVERYTHING FOR SAW MILLS—GET OUR QUOTATIONS.

Best Quality of Work.  
Low Prices.

# WATEROUS, Brantford, Canada