

"VITITE"

COMPRESSED HIGH PRESSURE STEAM PACKING

"Vitite" Packing is a Compressed Asbestos sheeting especially treated. It makes an ideal flange and manhole joint and a trial will be a revelation to you.

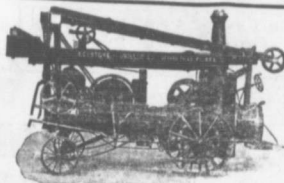
"Vitite" Packing resists highest steam pressure and superheated steam, and is unexcelled as a flange packing for Steam, Hydraulic, Gas Engine, Acid, Ammonia and other joints.

"Vitite" Packing insures greatest reliability against pressure and stretching and will not become hard in the joint.

"Vitite" Packing is supplied in sheets 48 inches square, 1-32, 1-16 and 1-8 inch thick.

SAMPLES AND PRICES ON REQUEST.

T. McAVITY & SONS, LIMITED.
ST. JOHN, N. B.



The KEYSTONE

Percussion Core Drill Attachment
is an economical appliance for
TESTING COAL LANDS.

It can be used in connection with any good "churn" drill, but operates best on the long-stroke KEYSTONE, thus making the cheapest and quickest method of boring to be found.

In operation a hole is sunk to the coal with the ordinary Rock Bit. The Bit and Stem are then removed and the Coring Attachment put on in their place. It takes a 4 ft. core out of the Softest as well as the Hardest part of the vein. Avoids all delay and expense of "rods" water wash, diamonds, shot, and heavy operating mechanism.

Price of Complete Attachment
\$200.00

Catalog No. 2 B. is a book on the subject.
We make Water, Oil & Test Well Drillers
for all depths and purposes.

Keystone Driller Co. Beaver Falls, Pa.

Mining & Mill Supplies.

Valves,
Fittings,
Packing,

Steam Goods
—of every—
Description.



Boiler
Tubes,
Steel
Plates,
Angles,
Tees, etc.
SOLID DIE
RIVETS.

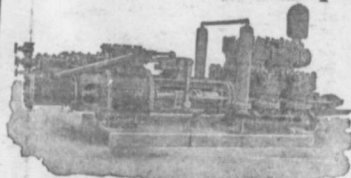
Iron Pipe for

Mining Purposes.

—Catalogues and Prices on Application.—

THOMAS ROBERTSON & CO.,
—LIMITED,—
MONTREAL, QUE.
—Established 1852—

Jeanesville Pumps



For MINES, WATER WORKS, SEWAGE,
ETC., ETC.

A Reliable, Efficient, and Substantial,
Because almost Fifty Years Experience
Stands back of Every Machine. Fol-
lowing types for any capacity, any head:

DIRECT ACTING and CRANK and FLY-WHEEL.
CENTRIFUGAL PUMPS, VOLUTE or TURBINE.

Steam or Electrically Driven

Jeanesville Iron Works Co.,
HAZLETON, PA., U. S. A.