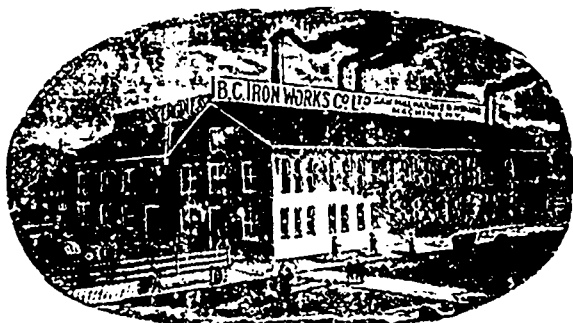


J. W. CAMPION, Sec.-Treas.; tel. 319.

J. E. MACFARLANE, Mgr.; tel. 419.

B. C. IRON WORKS CO., Ltd.

General founders, engineers, boiler-makers, and manufacturers of all classes of machinery. Keep in stock a full supply of engineers' and mill supplies, pipe and fittings, brass goods, steam fittings, wood-split pulleys, oak tinned leather belting, etc. Estimates for boilers and engines on application.

Corner Alexander St. and Westminster Ave., Vancouver, B. C.

P. O. drawer 751.

Telephone 315.

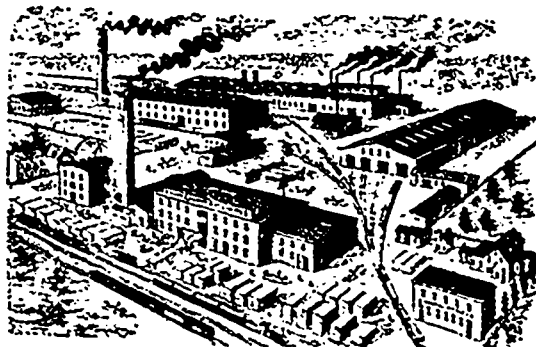
Cable address "Cove."

Cable address
"Gillivray."**D. MCGILLIVRAY,***Manufacturer of all kinds of***STEEL AND IRON HYDRAULIC MINING PIPE**

Estimates furnished of cost of power plants, and putting water on Mining Claims, Monitors, Gates, Valves, Pelton Wheels, etc., furnished at shortest notice and lowest rates.

Head Office, Vancouver, B.C.

Steel Pipe Works, New Westminster, B.C.



*Car Works,
Machine Works,
Foundry,
Planing Mills,
Saw Mills.*

RHODES, CURRY & Co., Limited,
AMHERST, N. S.



THE CELEBRATED
BOSS WASHER
MADE ONLY BY
ANDREW BELL,
375 Market St., Newark, N.J.
Samples Sent by Mail.

C. H. McIntire.

J. H. Wesler.

McIntire Mfg Co.,

Electrical Manufacturers,

CONTRACTORS,

And Dealers in EVERYTHING ELECTRICAL.

**13 and 15 Franklin St.,
NEWARK, N. J.**

Light Plants, Motors, Fans, Lamps, Batteries, Bells, Annunciators, Burglar Alarms, Heat Regulators, Testing Instruments, House Wiring, Repairing.

**Renaud, King & Patterson**

Manufacturers of

Fine Parlor, Bedroom, Dining Room & Library Furniture.

Importers of

English Wrought Iron and Brass Bedsteads.

WAREROOMS, 652 CRAIG ST.**MONTREAL.****NEW YORK ELECTRICAL WORKS.**

161 WASHINGTON ST. N.Y.

**DESIGNERS, ORIGINATORS
AND MANUFACTURERS OF
SUPERIOR
TROLLEY FITTINGS.**

WRITE**FOR****BOTTOM****PRICES**