

SINGLE CYLINDER HEAVY DUTY CORLISS, STEAM DASH POTS.

HEAVY DUTY Goldie Corliss Engines

**BUILT FOR DIRECT and
BELTED CONNECTION**

We shall be pleased to forward any of our Catalogues, with prices and all information to persons interested in our products.

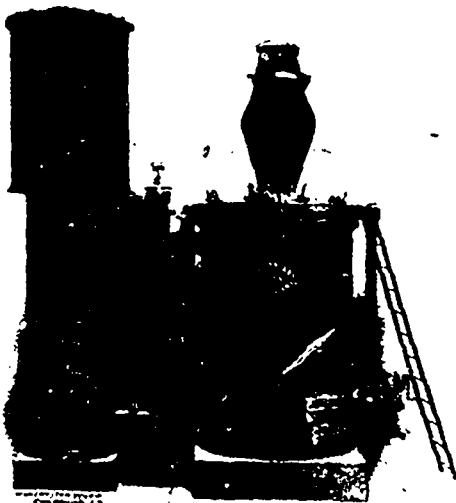
THE GOLDIE & McCULLOCH CO., LIMITED
GALT ———— ONTARIO ———— CANADA

WE MAKE Wheelock Engines, Corliss Engines, Ideal High Speed Engines, Boilers, Steam and Power Pumps, Condensers, Flour Mill Machinery, Oatmeal Mill Machinery, Wood Working Machinery, Heading Machinery, Wood Rim Split Pulleys, Iron Pulleys, Shafting, Hangers, Friction Clutch Couplings, Friction Clutch Pulleys, Safes, Vaults and Vault Doors. Send for Catalogue and Prices.

Western Branch: 248 McDermott Ave., Winnipeg, Man.

**Quebec Agents: ROSS & GREIG, Montreal, Que.
B.C. Selling Agents: ROBERT HAMILTON & CO.,
Vancouver, B.C.**

DO you realize how difficult it often is for your salesman to get an interview with the heads of manufacturing firms—with the men who buy? This paper is an ever-welcome salesman. Why not get the benefit of its influence?



Newest Type Suction Plant

CROSSLEY BROS., Limited

(OF MANCHESTER, ENGLAND)

CANADIAN AGENCY

212 Board of Trade Bldg., - MONTREAL

Gas Engines, 1 to 1,000 H.P.
Suction Gas Plants up to 700 H.P.
Bituminous Gas Plants up to 5,000 H.P.
Ammonia Recovery Plants.
Gas from Lignite, Sawdust, Wood, Peat, &c.

WRITE ABOVE ADDRESS FOR LITERATURE

When writing to Advertisers kindly mention THE CANADIAN MANUFACTURER.