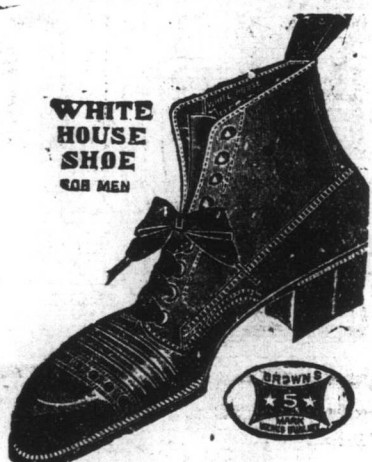


Job Boots!
BIG VALUES
In American Footwear.



Men's Tan Work Boots,
Good Heavy Soles.
Price: \$3.25 & \$3.75 per pair.



Men's Fine
Dark Tan Laced Boots,
All Fitted with Rubber Heels. Made on Good
Rooty American Last,
\$4.50, 5.00, 5.50 & 6.00 the pair.
Extra Value in each pair.
Mail Orders Receive Prompt Attention.
Special Prices to Wholesale Buyers.

F. Smallwood,
Water Street, The Home of Good Shoes.

**NEW
SUITINGS**

in light colours
and weights for
Summer wear.

A splendid variety to select from.
Samples submitted to you on re-
ceipt of postal.



Furness Line Sailings.

Liverpool	St. John's	Boston	Halifax to	St. John's
to St. John's	to Halifax	to Halifax	to St. John's	to Liverpool
SACHEM Sept. 19th	Sept. 25th	Oct. 4th	Oct. 11th	Oct. 14th
DIGBY			Sept. 18th	Sept. 19th

Weekly connections to Spain, Portugal and Mediterranean Ports via Liverpool.
For freight rates or Passage, apply to

Furness, Withy & Co., Limited
WATER STREET EAST ST. JOHN'S, N.F.

The only way to know our SPECIALS is your acceptance of our invitation to call and look them over or send for Samples.
To Know Bon Marche Specials is to Want Bon Marche Specials.

MATS! — — — **MATS!**
VELVET ROPE DOOR MATS 24 x 14 75c
27 x 18 \$1.05
30 x 18 \$1.30
SPECIAL HEAVY RUBBER DOOR MATS \$2.50 each

Our DRESS DEPARTMENT is full of SPECIALS.
Range of Dress Tweeds 50c
Dress Flannels 60c
Navy & Black Serge 80c
54" Heavy Melton \$1.10
We are the Home of GOOD SERGES at all Prices.

HOSIERY! — — — **HOSIERY!**
Specials: Black & Coloured Hose 25c
OUR RANGE OF ENGLISH SILK HOSIERY 35c, \$1.30

UNDERWEAR! — — — **UNDERWEAR!**
Ladies' Strap Vests 19c
Silk Camisoles 45c
White Embroidered Under-shirts \$1.40
SPECIAL WHITE DOT MUSLIN BLOUSES 59c each
Men's Blue Chambray Work Shirts 79c
Ladies' Half Sleeve Vests, 22c
Ladies' Strap Coy. Vests, 35c
Ladies' Moline Undershirts 35c
Men's Summer Sox; all colours 19c



"In quoting Books, quote such authors as are usually read: others you may read for your own satisfaction, but not name them."—J. Selden.

BOOKS
YOU READ FOR YOUR OWN SATISFACTION:
The Arms of the Sun, by Lady Dorothy Mills \$1.50
The White Wilderness, by Geo. Allan England \$1.50
Fire Mountains, by Norman Springer \$1.50
Broken Links, by Gertrude Parsons \$1.25
Pink Sugar, by O'Douglas \$1.50
Sayonara (Good-Bye), by John Paris \$1.50
Psmith in the City, by P. G. Wodehouse 75c
The Struggling Saint, by Rafael Sabatini \$1.25
The Honourable Jim, by Baroness Orczy \$1.50

S. E. GARLAND
Leading Bookseller & Stationer, 177-9 Water Street.

**BUY—WEAR—USE
A FISH BRAND REFLEX SLICKER**

Call upon it any rainy day to keep you dry and warm. You will never be disappointed in its worth and service. Backed by a record of 87 years' manufacture. What more can be said?



Satisfaction guaranteed
TOWER'S FISH BRAND
A. J. TOWER CO.
BOSTON, MASS.
PETERS & SONS, ST. JOHN'S, Agents

COAL!

If you want the BEST order our
WELSH ANTHRACITE.
All who used it last year say it is the best they ever had.
Screened North Sydney. Burnside Scotch.
A. H. Murray & Co., Ltd.
PHONE 1867. BECK'S COVE.

"STANYL"
(DISINFECTANT FLUID)

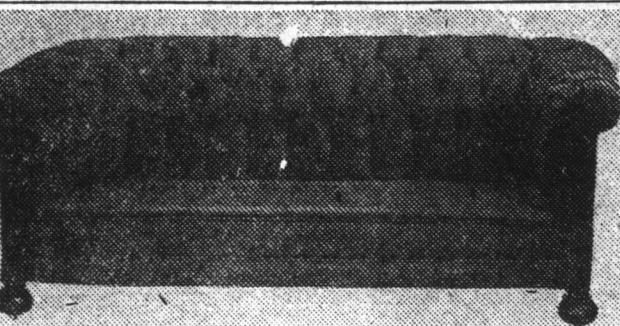
Non-caustic and perfectly soluble with water, forming a milky, opalescent mixture which will remain without separation.
Contains 16-17 p.p.m. Tar Acids.
FORMULA:
By special arrangement with Messrs. H. E. Stevenson & Co., Manufacturing Chemists, London, England, Contractors to H. M. Government.
Established 1880.
Awards: London. Calcutta. Chicago. Vienna.
THE STANDARD MFG. CO., LIMITED.
ST. JOHN'S, NEWFOUNDLAND.

Forty-Five Years in the Service of
the Public—The Evening Telegram.

**School
Books
AND
Supplies.**

DICKS & CO., LTD.
The Booksellers.

Guaranteed Products!



Buy Upholstered Furniture that stays upholstered. Don't experiment with Chesterfields and Chairs that have nothing to recommend them but attractive prices. We make all our own frames from the best selected hardwoods and insure a solid foundation to build upon. The springs are manufactured of the best oil tempered Premier Spring Wire. Nothing but the best quality of stuffing materials are used and all work is carefully inspected before it leaves our factory.

**POPE'S
Furniture and Mattress Factory**
EST. 1860. PHONE 659
GEORGE & WALDEGRAVE STS.

Because a Camel grows hair it doesn't follow that all Belting is

"CAMEL HAIR" BELTING
"CAMEL HAIR" BELTING is made only by
F. REDDAWAY & COMPANY, MANCHESTER.

A total of over 100,000,000 Feet of this Belting has been manufactured. It has been shipped to every port in the Seven Seas, and not one failure recorded!

BECOME A USER TO-DAY!
Other Reddaway Products are:
"CAMEL" FIRE HOSE. SUCTION HOSE.
AIR HOSE WATER HOSE.
STEAM HOSE.
"CAMELATA" BELTING. RUBBER BELTING.

WM. HEAP & Co., Ltd.
PHONE 1830. AGENTS for N.F.L.
mar, 28, 1915

School Music

First Books, Studio Pieces, Theory Books,
Trinity College Music,
The Celebrated Century & McKinley.
15 Cent. Editions.

CHARLES HUTTON
The Reliable Piano and Organ House.

Nfld. Government Railway.

SPECIAL TRAIN SERVICE
Between St. John's, Topsail and Manuels, to Accommodate Excursionists and Naval Men.
Extra trains will leave St. John's Depot 8 a.m., 12.15 p.m., 5.30 p.m.
Returning leave Manuels Station 9.45 a.m., 1.35 p.m., 7.20 p.m.
Passengers will also be accommodated on regular trains leaving and arriving at usual hours.
General Public can purchase Excursion Tickets at One Way First Class Fare.

SPECIAL TRAIN SERVICE ACCOUNT RECEPTION ON H.M.S. HOOD.
Special train will leave St. John's Depot 2 p.m. Saturday, September 13th, for Topsail. Returning leave Topsail 6.30 p.m.
(This train will accommodate passengers attending Reception on H.M.S. Hood.)

LABRADOR STEAMSHIP SERVICE.
S.S. MEIGLE will leave Dry Dock Wharf 10 a.m., Tuesday, September 16th, calling at regular ports en route to Hopedale.
Frigat for ports of call on the above route, as advertised in Directory, as far as Hopedale, will be accepted at the Dock Shed to-day, Friday, from 9 a.m. to 5 p.m., and Saturday, from 9 a.m. to 5 p.m.

Nfld. Government Railway.

RED CROSS LINE!

NEW YORK. HALIFAX. ST. JOHN'S
SCHEDULE OF SAILINGS FOR SEPTEMBER

From New York at 11 a.m.	From St. John's at 12 o'clock, noon
Sept. 13th ROSALIND Sept. 13th	Sept. 13th SILVIA Sept. 20th
Sept. 20th ROSALIND Sept. 27th	Sept. 20th SILVIA Oct. 4th

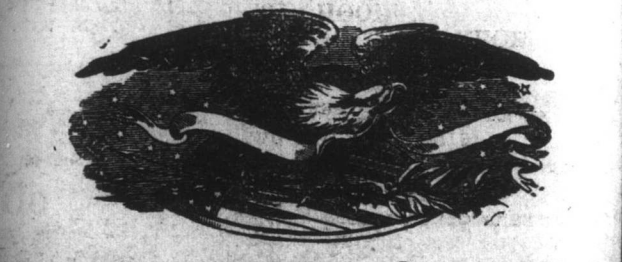
THROUGH RATES QUOTED TO ALL PORTS.
Round trip tickets issued at special rates with six months stop-over privileges.
BOYRING & COMPANY, 17 Battery Place, New York
General Agents.
G. S. CAMPBELL & CO., HALIFAX, N.S.
HARVEY & CO., LTD., ST. JOHN'S, N.F.L.
Agents, Agents, Jan 5, m. w. f. t.

NOTICE!

EAST BOSTON, MASS.—HALIFAX, N.S.—ST. JOHN'S, N.F.L.—NORTH SYDNEY, N.S.
Steel Steamship "SABLE I." will
Leave—
East Boston 2 p.m. Sept. 9th; Sept. 23rd for Halifax
Halifax 2 p.m. Sept. 12th; Sept. 26th for St. John's
St. John's 2 p.m. Sept. 16th; Sept. 30th for N. Sydney
North Sydney 2 p.m. Sept. 19th; Oct. 2nd for Halifax
Halifax 2 p.m. Sept. 20th; Oct. 4th for E. Boston
Fares on application; reservations now accepted.
Passengers by steamer from St. John's make connection with Thursday morning's train at North Sydney.
Apply **HARVEY & CO., LTD., St. John's, Nfld.**
sept 11, th, s, t, f

CANADIAN NATIONAL RAILWAYS
TORONTO TO—DETROIT CHICAGO.

TRAVEL BY NATIONAL LINES
"INTERNATIONAL LIMITED."
Leaves Bonaventure Station, Montreal, at 10.00 a.m. Daily.
Direct connection from Halifax or North Sydney by
"OCEAN LIMITED."
For Fares, Reservations, etc., apply to
R. H. WEBSTER, General Agent.



We Build CLOTHES to fit your Figure
from your own selection of Style and Fabric, giving you
MAXIMUM VALUE at MINIMUM PRICE
proving to your entire satisfaction the value of a
hand-tailored Suit
W. P. SHORTALL,
THE AMERICAN TAILOR,
300 Water Street Phone: 477. P.O.B. 445. ST. JOHN'S, N.F.