

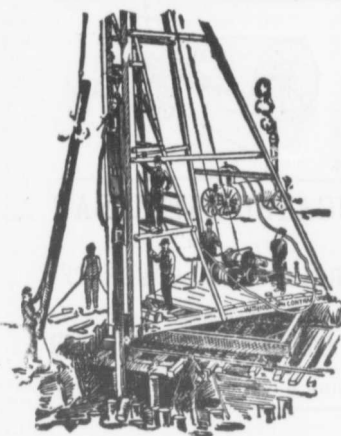
# The Canadian Bridge Co., Limited

WALKERVILLE, ONT.

MANUFACTURERS OF

## RAILWAY AND HIGHWAY BRIDGES

Locomotive Turn Tables,  
Roofs, Steel Buildings and  
Structural Iron Work of all descriptions



### Pile Driving

on land or water by Steam Pile Drivers or Drop Hammers.

Portable Boilers, Hoisting Engines, Pumping Machinery  
To Let—bridge Building, Trestle Work,  
Wharves, Dams, Diving Submarine  
Work and General Contracting.

WM. HOOD & SON  
10 Richmond Sq. - MONTREAL

### CANADIAN EMPLOYMENT AGENCY

Licensed Labor Contractors  
The Temple Building, 185 St. James St.  
MONTREAL

All classes of labor, skilled and otherwise,  
supplied at short notice.  
Special attention given to gangs for construction, lumber camps, etc.

All Orders given Special Attention.

### The Ontario Accident Insurance Co.

ACCIDENT, EMPLOYERS, ELEVATOR  
AND GENERAL LIABILITY . . . .

104 St. Francois Xavier St. Montreal

Established 1898

### The Hanover Portland Cement Co., Ltd.

Hanover, Ontario

Manufacturers of the Celebrated

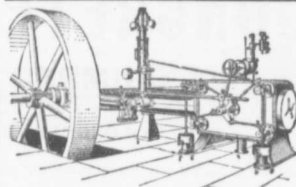
"SAUGEEN" Brand of PORTLAND CEMENT

Prices on application.  
Prompt shipments.

For Contractors, Switches, Girders, &c.  
New and Second Hand  
**RAILS LOCOMOTIVES AND CARS**

John J. Gartshore

83 Front St. West,  
(Opposite Queen's Hotel.) TORONTO



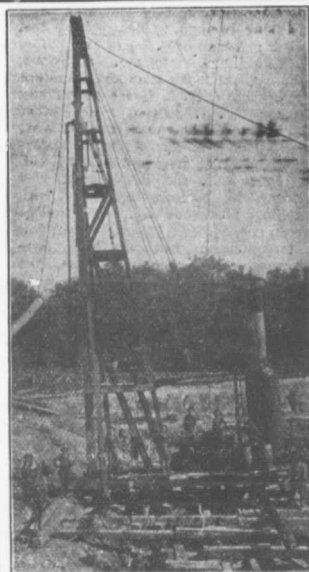
### LEONARD CORLISS ENGINES

Girder Frame and Heavy Duty Styles

### LEONARD AUTOMATICS AND BOILERS

for Steam Plants, Complete

E. LEONARD & SONS, LONDON, CANADA



### PILE DRIVING

and Foundation Work.

By 5-ton Automatic Steam Pile Hammer,  
Water Jet or Drop Hammers, Dock Building,  
Submarine Work and Dredging.

### BUILDING MOVER AND WRECKER

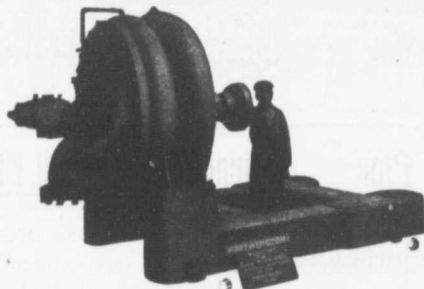
General Contracting.

JNO. E. RUSSELL, - Toronto

Residence, 1010 Queen St. E.—Phone M. 4636  
Office and yard, 307 Logan Ave.—Phone M. 2007

# WORTHINGTON PUMPS

FOR WATER WORKS SERVICES



Worthington 2 Stage Turbine Pump for the Winnipeg Water Works, Capacity 5,000,000 per 24 hours.

We Have Two Stage Pumps in Operation Delivering Against 160 Pounds Pressure

### "WORTHINGTON" TURBINE PUMPS

for heads up to 2,000 feet, are  
Reliable, Durable, Efficient  
and exceedingly simple

WE ALSO MANUFACTURE

**Boilers, Tanks, Filters**  
Etc.

**The John McDougall Caledonian Iron Works Co.,**

ESTABLISHED 1882

Montreal.

Limited.