

Issued Each Week—only One Dollar a Year

VOL. XXVIII

NUMBER 50

# FARM AND DAIRY

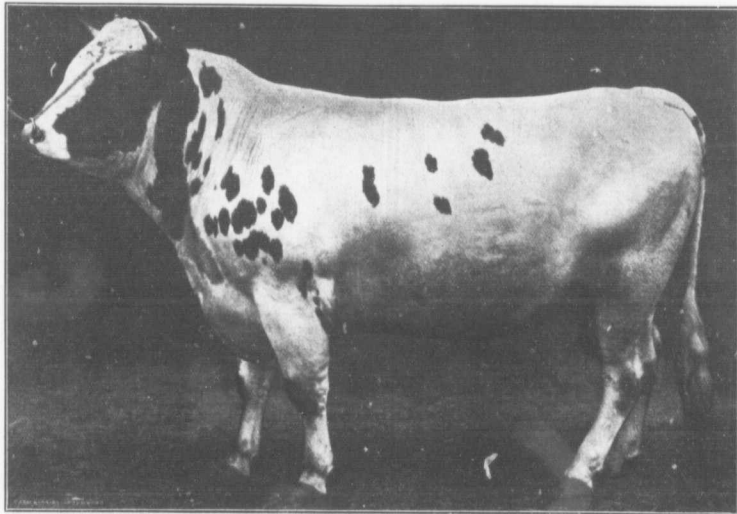
## RURAL HOME

PETERBORO, ONT.

DECEMBER 16,

1909

Copyright 1909  
C.E.F.



### WHEN SELECTING A DAIRY BULL LET NOT PRICE BE THE MAIN CONSIDERATION

In so far as is consistent one should make price the last consideration when selecting a dairy bull. The individual and his breeding—his ancestry—is what counts. If bred from a high producing dam got from heavy milking stock a bull is reasonably certain to pass on such characteristics to his progeny. The difference between a good cow and a poor cow is so great that heifers from a richly bred bull will soon return their sire's purchase price.

Lord Cornelius Teusen, 6745, illustrated above, and owned by The Trethewey Model Farm, is a grand individual and meets the requirements looked for.

DEVOTED TO  
BETTER FARMING AND  
CANADIAN COUNTRY LIFE