

Important to Farmers

We would repeat again what we have so frequently stated in appeals to our Western Farmers,—that the only satisfactory way by which they can realize the largest net return for their grain according to the market at time of sale, is by shipping it by the carload to Fort William and Port Arthur, and having it looked after and sold in the Winnipeg market by a reliable and experienced commission firm, acting solely as the Farmer's agents. If besides this the grain is loaded direct into car instead of through an elevator it saves expense and cuts out every middleman but the one commission agent, between the Farmer and the buyer who pays the highest price in store Fort William or Port Arthur, who is usually the exporter, though not always.

At this time of year grain prices usually become firmer, because every day as it passes brings us nearer the opening of lake navigation, and decreases the length of time grain need lie in the terminal elevators under the expense of storage, and there is always the anticipation and prospect of increased activity in buying, which the opening of navigation brings. Also between now and summer there sometimes develops serious impairment in the prospect for the growing wheat crops in different countries, which advances prices sharply. Farmers therefore can make no mistake in getting as much of their left-over grain as possible shipped forward before the busy seedtime comes on, in order to have it in a position where it can easily secure the advantage of any sharp advance in prices that may occur.

Farmers should keep themselves informed about market prospects and possibilities by writing to and consulting us, and should bill their cars to Order Thompson Sons and Co., Fort William or Port Arthur (according to railway shipped on) notify Thompson Sons and Co., Winnipeg. We make liberal advances on car lots shipped to us, and carry same at a moderate commercial rate of interest, as long as seems desirable to do so.

Write or wire, we are promptly and always at your service, and our sole charge is the regular commission of 1c per bushel on the grain we actually handle.

THOMPSON, SONS & CO.

Grain Commission Merchants

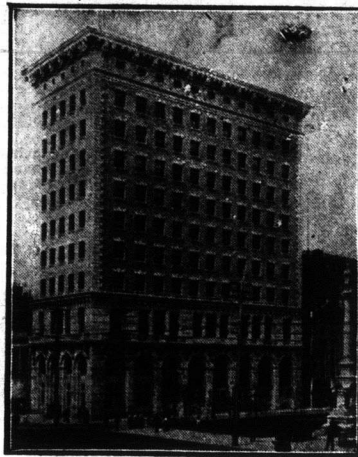
700-703A Grain Exchange

WINNIPEG, CANADA

UNION BANK OF CANADA

Established 1865

Head Office - Winnipeg



Paid-up Capital \$5,000,000

Reserve and Undivided Profits 3,175,000

Total Assets, over 63,000,000

HON. PRESIDENT - HON. J. SHEARLES

PRESIDENT - JOHN GALT

VICE-PRESIDENTS:

W. PRICE R. T. RILEY

DIRECTORS:

W. R. ALLAN S. HAAS

S. BARKER, M.P. F. E. KENASTON

M. BULL G. P. REID

Lieut-Col. J. CARSON G. H. THOMSON

E. L. DREWRY W. SHAW

E. E. A. DU VERNET, K.C.

G. H. BALFOUR, General Manager.

H. B. SHAW Assistant General Manager.

F. W. S. CRISPO, Superintendent of Branches and Chief Inspector.

London, England, Branch No. 51 Threadneedle Street, E.C.

Head Office, Winnipeg.

SPECIAL ATTENTION GIVEN TO FARMERS' BUSINESS

Grain Drafts Negotiated. Interest Allowed on Deposits.

Branches and Agencies West of Great Lakes:

Manitoba—Baldur, Birtle, Boissevain, Brandon, Carberry, Carman, Carroll, Clearwater, Crystal City, Cypress River, Dauphin, Deloraine, Glenboro, Hamiota, Hartney, Holland, Killarney, Manitou, Melita, Minnedosa, Minto, Morden, Neepawa, Newdale, Ninga, Rapid City, Roblin, Russell, Shoal Lake, Souris, Strathclair, Virden, Waskada, Wawanesa, Wellwood, Winnipeg.

Saskatchewan—Adanac, Alsask, Arcola, Asquith, Bounty, Buchanan, Cabri, Canora, Carlyle, Craik, Cupar, Cut Knife, Esterhazy, Eyebrow, Fillmore, Gravelbourg, Gull Lake, Herbert, Humboldt, Indian Head, Jansen, Kerrobert, Kindersley, Landis, Lang, Lanigan, Leeville, Lemberg, Lumsden, Luseland, Macklin, Maple Creek, Maryfield, Milestone, Moose Jaw, Moosomin, Netherhill, Neudorf, Ogema, Outlook, Oxbow, Pense, Perdue, Plenty, Qu'Appelle, Regina, Rocanville, Rosetown, Saskatoon, Scott, Simpson, Sinitaluta, Southey, Strassburg, Swift Current, Tessler, Theodore, Toga, Tompkins, Vanguard, Viceroy, Wapella, Wawota, Watrous, Webb, Weyburn, Wilkie, Windthorst, Wolseley, Yorkton, Zealandia.

Alberta—Airdrie, Alix, Barons, Bashaw, Bassano, Bellevue, Blackie, Blairmore, Bowden, Bow Island, Brooks, Calgary, Carbon, Cardston, Carlstadt, Carstairs, Claresholm, Cochrane, Consort, Cowley, Didsbury, Edmonton, Fort Saskatchewan, Grande Prairie, Grassy Lake, High River, Hillcrest, Innisfail, Irvine, Lacombe, Langdon, Lethbridge, Macleod, Medicine Hat, Okotoks, Passburg, Pincher Creek, Seven Persons, Strathmore, Swallow, Three Hills, Wainwright.

British Columbia—Enderby, Hazelton, Nanaimo, New Hazelton, Prince Rupert, Telkwa, Vancouver, Vernon, Victoria.

This Bank, having over 260 branches in Canada, extending from Halifax to Prince Rupert, offers excellent facilities for the transaction of every description of banking business. It has correspondents in all cities of importance throughout Canada, the United States, the Continent of Europe, and the British Colonies.

Collections made in all parts of the Dominion, and returns promptly remitted at lowest rates of exchange.

Winnipeg Branch, D. M. NEEVE, Manager. F. J. BOULTON, Asst.-Manager.

Does This Appeal To You?

There is a Great

Land of Promise in Western Canada

where YOU CAN'T LOSE if you are willing to work

The Government of Canada
will give you

160 Acres of Land Free

Thousands have gone in and made good.

Can YOU afford to overlook this opportunity?

For further particulars apply to

Inquirers in Great Britain apply to J. OBED SMITH, Assistant Superintendent of Emigration, 11-12 Charing Cross, London, S.W., Eng.
All others to W. D. SCOTT, Superintendent of Immigration, Ottawa, Canada.