

continued for several successive seasons ; if none of the Golden Rod can be conveniently grown, numbers of the beetles may still be caught while pairing on the trunk of the trees ; if too high to reach, a sharp rap against the tree will cause them to drop to the ground, when with a little activity they can be secured.

The grub remains in the tree about a year ; the beetle when handled, makes a peculiar sharp creaking noise.

This trouble
summer. What
seem, as yet, to a
currant and goose
liberal supplies of
For the bene
troduced again fi
stages as we have

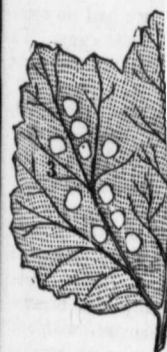


FIG.



c