

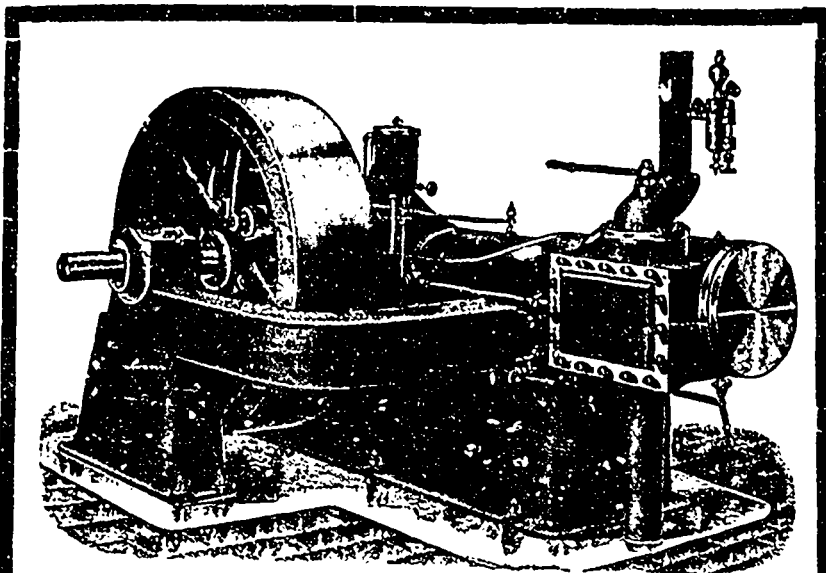
**NATURAL DRAFT
MOIST AIR . . . DRY KILNS**

**LUMBER TRUCKS and
TRANSFER CARS**

Write for prices and particulars of the most simple and efficient Natural Draft Dryer on the market. Testimonials and list of users sent on application. Every square inch of heating surface is utilized to the uttermost and perfect ventilation and circulation is obtained by a very simple arrangement of ducts. Write for particulars to

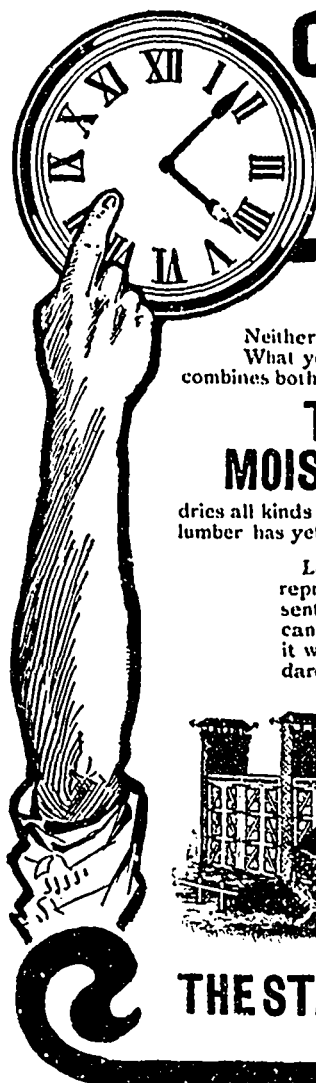
**SHELDON & SHELDON,
GALT, ONT.**

FORMERLY McEACHREN HEATING & VENTILATING CO.



The out-board bearing on the Robb-Armstrong Engine, up to 100 horse power, is connected to the bed by a wing as shown in cut, keeping the bearing perfectly in line. This is a great advantage, particularly for portable saw-mill purposes.

Robb Engineering Co., Limited
Amherst, N. S.



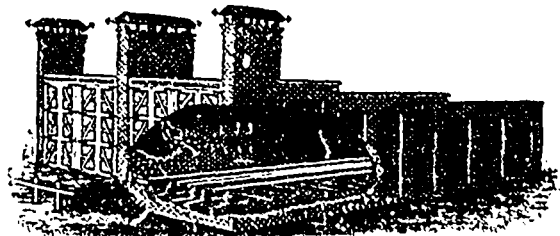
**COUNT THE HOURS
YOU LOSE
IN DRYING!**

Proper drying is not enough.
Neither is quick drying.
What you ought to have is a drying system that combines both.

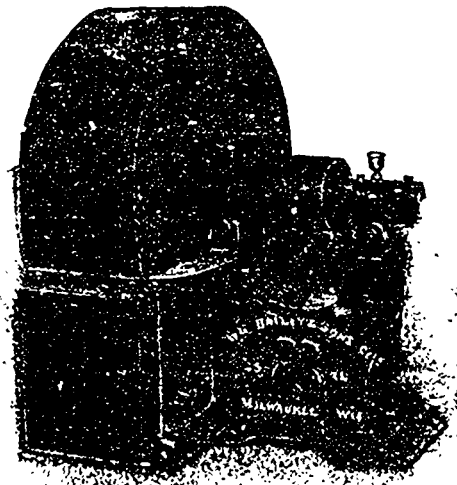
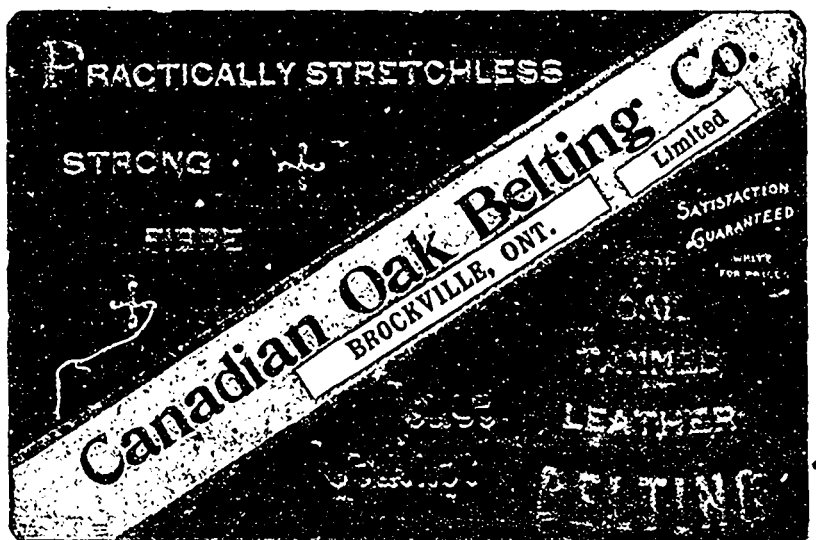
**THE STANDARD
MOIST AIR DRY KILN**

dries all kinds of lumber properly in the fewest hours that lumber has yet been properly dried

Letters of praise from hundreds of representative lumbermen are presented in our Catalogue "D." You can have it by saying the word. With it we'll send our new booklet, "Standard Users and why."



THE STANDARD DRY KILN CO.
Indianapolis, Ind.



SINGLE EXHAUSTER.

WM. BAYLEY & SONS CO.

732-773 GREENBUSH STREET, MILWAUKEE, WIS.

MANUFACTURERS
OF . . .

STEEL PLATE EXHAUSTERS

Single and Double, for Handling Sawdust and Shavings.

Hot Blast Heating and Ventilating Apparatus for Factories, Dry Kilns, blowers, Blast Gates, Disk Fans, Steel Roller Bearing Lumber Trucks, Transfer Trucks, Vertical and Horizontal Engines, Induced and Forced Draft Apparatus

Write Us and Get Illustrated Descriptive Catalogue.

BRANCHES: { The Ohio Blower Co., Cleveland, Ohio.
The Witter Corbin Machinery Co., Seattle, Wash.
The Globe Engineering Co., San Francisco, Cal.