

Miners Wanted

TO CHEW

PAY ROLL

Plug Tobacco

WANTED.

At the several collieries of the Dominion coal co. Limited, skilled coal miners and mine laborers.

Apply on the works Or by letter

Dominion Coal Company, Ltd

Genuine Garlock Packings

FOR ALL PURPOSES.

**Pipe and Boiler Coverings,
ENGINEERS SUPPLIES.**

also

"Tauril" High Pressure Jointing
the Best Sheet Packing yet
Produced.

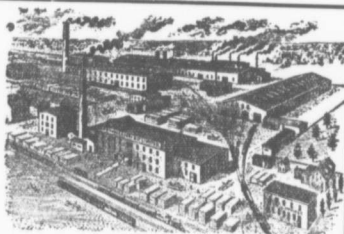
THE GARLOCK PACKING CO.
HAMILTON, ONTARIO.

Used by Collieries in Lancashire, Staffordshire
& Yorkshire

'X TERRA' COLLIERY LAMP OIL.

For Marsaut, Muesle Deflector or Closed Lamp

PURE WHITE FLAME **LOW PRICE**
E. WOLASTON, Dutton St MANCHESTER
Sole Representatives for Canada, **AUSTEN BROS.,**
Halifax, N. S.



—MANUFACTURERS OF—

RAILWAY
STREET and
MINING

CARS,

CAR WHEELS Church Pews,
FORGINGS & Fittings for Stores, Schools, &
CASTINGS A SPECIALTY

Large Stocks of Foreign and Domestic Lumber on Sale.

Rhodes, BUILDING MATERIALS
GENERAL

Curry & co., Ltd.

Branch **ROBBIE STREET,** **AMHERST, N. S.**
HALIFAX, N. S.

INTERCOLONIAL RAILWAY

On and after SUNDAY, OCT. 13 1907 trains
run daily, Sunday excepted, as follows—

—TRAINS LEAVE STELLARTON—

No 144 Mixed for Hopewell	5 55
No 79 Mixed for Trenton	6 30
75 Mixed for Hopewell	6 35
18 Express for Halifax, and St. John	7 40
31 Mixed for Pictou Landing	7 40
62 Mixed for Pictou	7 45
55 Mixed for Mulgrave	8 30
19 Express for Sydney	11 10
25 Mixed for Truro	11 15
56 Mixed for Truro	13 35
129 Mixed for New Glasgow	13 55
85 Express for the Sydney	16 20
30 Express for Halifax and Montreal	15 30
140 Mixed for Pictou	15 35
141 Mixed for Pictou Landing	16 45
21 Mixed for H. swell	16 55
65 Mixed for New Glasgow	19 50
26 Express for Halifax and St. John	19 50
17 Express for New Glasgow	21 50
66 Express for Pictou	21 55

—TRAINS ARRIVE AT STELLARTON

79 Mixed from Hopewell	6 30
75 Mixed from Trenton	6 55
41 Express from Pictou	7 30
18 Express from New Glasgow	7 35
31 Mixed from Hopewell	7 35
55 Mixed from Truro	8 00
25 Mixed from New Glasgow	10 55
27 Mixed from Pictou	10 55
56 Mixed from Mulgrave	12 35
19 Express from Halifax and St John	11 00
129 Mixed from Pictou	15 15
85 Express from Halifax and St. John	16 40
30 Express from Sydney	16 20
25 Mixed from Pictou Landing	16 10
77 Mixed from Hopewell	16 48
65 Mixed from Pictou	16 25
86 Express from the Sydney	19 40
62 Express from New Glasgow	21 40
17 Express from St John and Halifax	21 48

All trains are run by Atlantic Standard time Twenty four
O'clock a mid-night. Montreal, N. B. OCT 13th, 1907

Buffet Sleeping cars on trains 85 and 86 between Halifax
and Sydney. Dining cars between Halifax and Mulgrave.
Buffet Parlor Car on Trains 19 and 20 between Halifax and
Sydney. Dining cars between Mulgrave and South River