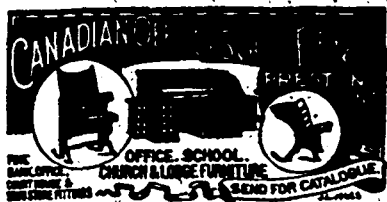


ELECTRICITY

Mechanical Design; Railway, Locomotive and Marine Engineering; Milling; Mechanical and Architectural Drawing; Architecture; Plumbing; Railroad, 31 COURSES & Bridge Engineering; Surveying and Mapping; Sheet Metal Pattern Cutting; Metal Freezing; Bookbinding; Shorthand; English Grammar. All who study **GUARANTEED SUCCESS.** Fees Moderate. Advance or Installments. Circular Free. State subject you wish to study. International Correspondence Schools, Box 1004, Scranton, Pa.

**PATENTS PROCURED ON ELECTRICAL INVENTIONS**

BY **RIDOUT & MAYBEE**, 103 Bay St., Toronto Telephone 3582.
Foreign Members of Chartered Institute of Patent Agents, England.

**DODGE...**

- Split Friction Clutch Pulley and Cut-Off Coupling.
- Special Dynamo and Motor Pulleys.
- High Glass Hangers, Floor Stands, Self-Oiling Bearings, Shafting, &c.

Prices and Information on Application.

DODGE WOOD-SPLIT PULLEY COMPANY

Office, 74 York St. - TORONTO

Our "Acme" Automatic GURTAINS
Railway Coach and Street Car

For either open or closed cars—made to fit any Window,
ARE THE BEST IN THE WORLD.

We also manufacture a New Special Material for Excursion or Open Street Cars, which is perfectly waterproof, will not fade, natter in appearance, any width without a seam, stronger and cheaper than any shade now upon the market. Can be seen on new cars lately erected by the Toronto Railway Co. We also carry in stock every description of Railway Coach and Street Railway Shade Cloth, Goods, Fixtures, etc.

WRITE FOR PARTICULARS AND SAMPLES.

Menzie, Turner & Co. SHADE **Toronto**
MANUFACTURERS

Use Our

**LAMPS**

and our other

ELECTRICAL SUPPLIES

Munderloh & Co.

61 St. Sulpice St.



MONTREAL

The Packard Electric Co., Ltd.

MAKERS OF

Lamps and Transformers

SOLE AGENTS FOR

Ssheaffer Recording Watt Meters

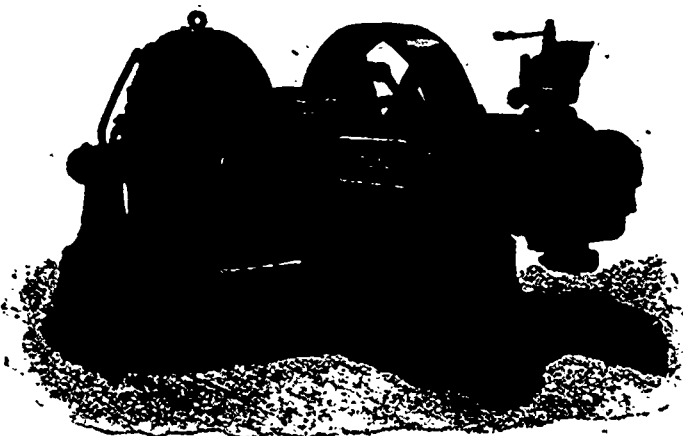


ST. CATHARINES, ONT.

THE Goldie & McCulloch Co.

MANUFACTURERS OF

LIMITED

**IMPROVED
STEAM
ENGINES
AND
BOILERS**

Flouring Mills, And the Erection of Same in the Most Complete Style of Modern Improvement.

**Wool Machinery,
Wood-Working Machinery
Saw Mill, Shingle and
Stave Machinery,
Fire and Burglar-Proof
Safes and Vault Doors.**

THE "IDEAL" HIGH SPEED ENGINE, DIRECT-CONNECTED.

SPECIAL ATTENTION called to the "WHEELLOCK" IMPROVED STEAM ENGINE, also the "IDEAL" HIGH SPEED ENGINE, cut of which appears above, as being Unequalled for Simplicity, Efficiency and Economy in Working, and Especially Adapted for Electric Lighting, Street Railways, Etc.

† **GALT, ONT.**