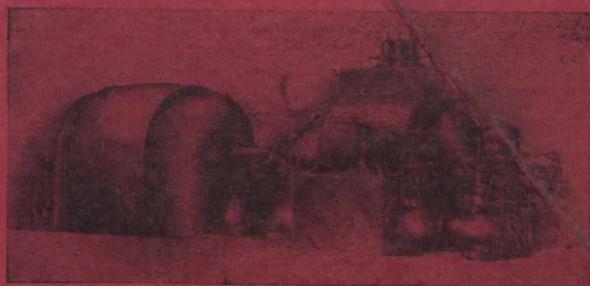


*Simplicity of construction is a feature that has been kept prominently in view in the design of*



Westinghouse Double-Flow Steam Turbine.

## Westinghouse Steam Turbines

together with the simplification of the whole power house equipment, thereby reducing the investment, the cost of labor and up-keep. Nothing that contributes to the highest degree of commercial economy is overlooked, as that is the only sort of economy that pays.

Westinghouse Turbines are made in four modified types, each having its particular field. Single-Flow Turbines, Double-Flow Turbines, Exhaust-Steam Turbines and Non-condensing Turbines.

**SEND FOR CATALOGUES.**

**Canadian Westinghouse Company, Limited**

General Office and Works: HAMILTON, ONTARIO.

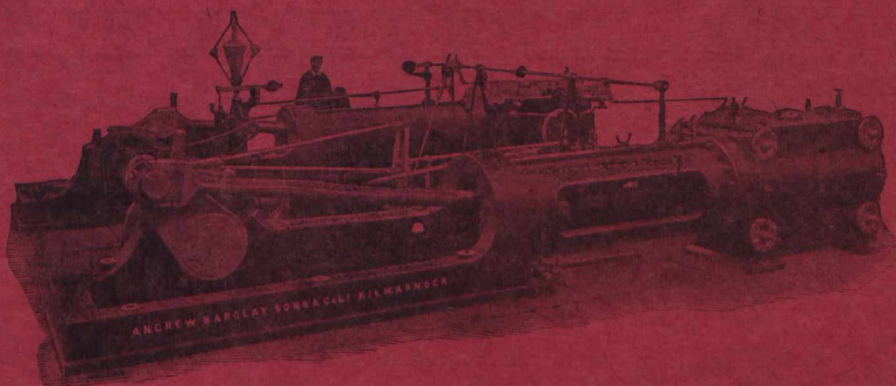
ADDRESS NEAREST OFFICE.

Toronto, Traders Bank Building.  
Montreal, 52 Victoria Square.

Halifax, Telephone Building.  
Winnipeg, 158 Portage Ave., East.

Calgary, 311 Eighth Avenue, West  
Vancouver, 439 Pender Street.

**High-class  
WINDING &  
HAULING  
ENGINES.  
Mine Fans  
Locomotives  
Pumps, etc.**



Please Note Full Address :

**Andrew Barclay,**

SONS & Co., Ltd.,

CALEDONIA WORKS,

**KILMARNOCK, Scotland.**

Canadian Representatives :  
CANADIAN BOVING CO.,  
164, BAY ST., TORONTO.