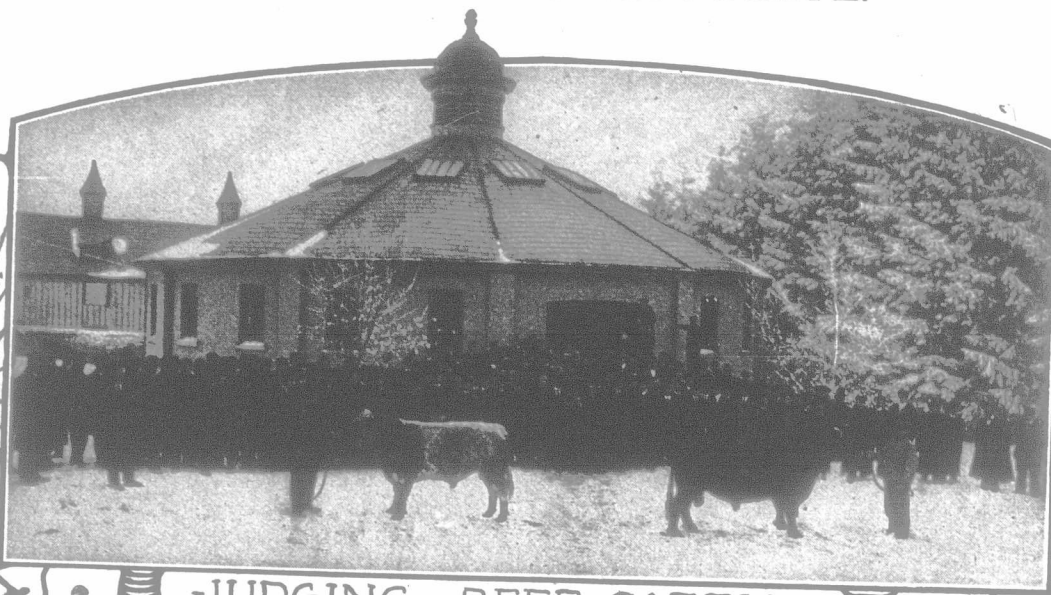


**Stock and Seed
Judging**JANUARY
12 to 23, 1915**Poultry Raising**JANUARY 12
to
FEBRUARY 6
1915

JUDGING BEEF CATTLE.

Fruit GrowingJANUARY 26 to
FEBRUARY 6
1915**Dairying**JANUARY 4 to
MARCH 19, 1915**Beekeeping**JANUARY 12 to 23
1915

BUTTER-MAKERS.



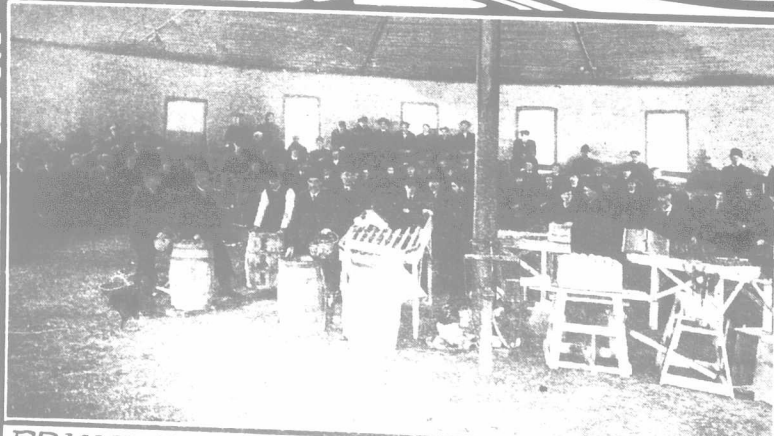
JUDGING POULTRY.

**Our Short
Courses**

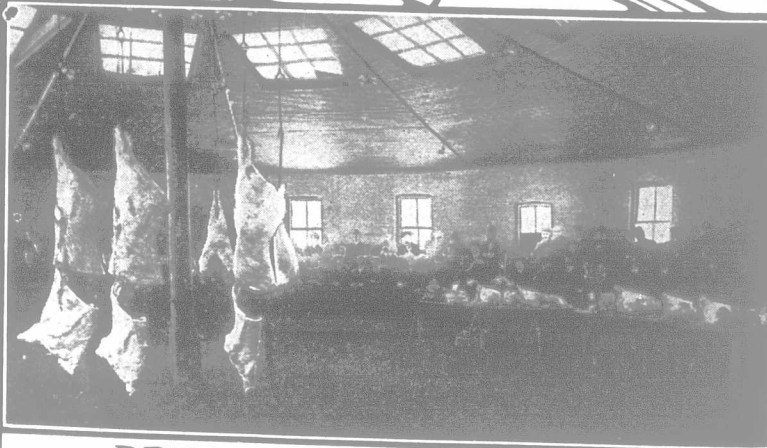
were institut-
ed for the ben-
efit of farmers
and farmers'
sons who can-
not attend
the regular
courses.

**ONTARIO
AGRICULTURAL
COLLEGE,
GUELPH, CANADA.**
**Railway
Rates**

Delegates
should be
careful to
secure the
standard Con-
vention Certi-
ficate when
purchasing
their one-way
tickets.



FRUIT PACKING DEMONSTRATION.



DRESSED CARCASSES.

G. C. CREELMAN, B.S.A., LLD., PRESIDENT

Board may be secured near the College at \$5.00 per week

a Send To-day for Our Illustrated Short-Course Calendar

Chri
as this,
merely as
means mo
it has co
the needs
spirit, ra
with a fe
Besides C
un-Christ
must dev
of the we
should be

As a
aspect, M
the admin
Advocate
a day whe
demands
the found
Canadian
the paren
three gene
To the ch
of rest an
And all t
with his p
truly port
proud, an
at its best

But
homes an
we should
am most f
judges, ed
merchants
a handfu
moved fro
who have
an area be
no reason
probably
showing, f
has been t
the countr
Wanderers
important

Since
send them
fortified w
on present
letter on a