

LADIES' LONG COAT WITH SHAWL COLLAR. (TO HAVE THE SLEEVES BOX-PLAITED OR GATHERED.)

(For Illustrations see Page 678.)

No. 2153.—Long coats are very much in evidence this season and show many charming and attractive variations. The shawl collar is a very stylish feature and is seen in the coat here illustrated made of gray cloth with the collar of Alaska sable fur. Splendid shaping is given by under-arm darts, side-back gores and a center seam, the center seam ending at the top of coat-laps, while coat-plaits appear at the side-back seams. The fronts are lapped in double-breasted fashion, and two frogs are used for closing just below the collar to give a decorative finish. The large shawl-collar at the neck gives an air of luxurious comfort to the coat. Square-cornered pocket-laps cover openings to side pockets in the fronts. The two-seam sleeves show correct adjustment and are neatly finished about the wrist with two rows of stitching in cuff effect; they may be either box-plaited or gathered at the top, as preferred.

All cloaking materials, such as broadcloth, melton, diagonal or kersey, are suitable for the mode; English tweeds and checks are also largely used. The collar may be developed in Persian-lamb, sable, Astrakhan, velvet, or of the coat material itself if a strictly plain effect is desired.

We have pattern No. 2153 in nine sizes for ladies from thirty to forty-six inches, bust measure. To make the coat for a lady of medium size, calls for four yards and seven-eighths of goods fifty-four inches wide. Price of pattern, 1s. or 25 cents.

LADIES' LONG COAT-WRAP, HAVING A CIRCULAR BACK WITH YOKE AND A CIRCULAR FLOUNCE. (For Illustrations see Page 679.)

No. 2151.—Another view of this coat-wrap is given at figure No. 176 H in this number of THE DELINEATOR.

Very handsome cloaking brocade in soft shades of tan and brown is combined with plain cream satin in the development of this charming wrap, while stone marten fur gives effective decoration. The coat-wrap reaches to the bottom of the gown. The back is designed with a pointed yoke to which is joined a gracefully flaring circular back made with a center seam and rippling prettily; under-arm and shoulder seams connect the back with the smooth, loose fronts. A circular flounce of uniform depth forms the lower part of the coat and gives a rippled effect about the foot; its sections are joined in seams corresponding with the seams in the upper part. The right front is reversed in a huge lapel that is held in position on the shoulder by a hook and loop, and the closing is made invisibly along the revers and down the left side, the fronts being widely lapped. Three bands of fur ornament the lapel, which is faced with the cream satin, and the outer band is extended down the entire front, giving a most effective edge finish. At the neck

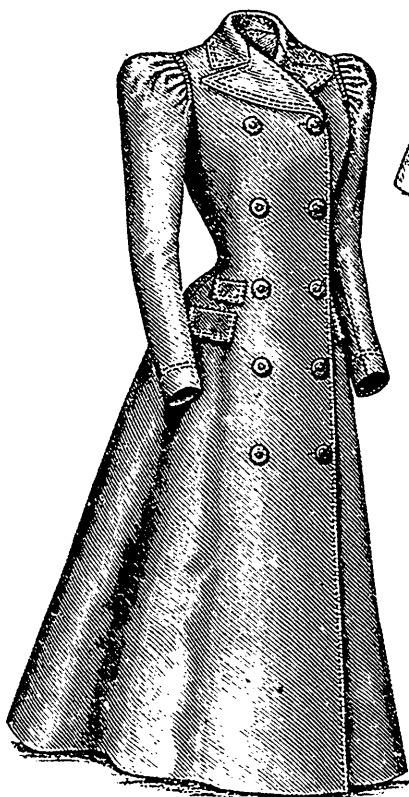
is a high Medici collar fashioned with rounding front corners, lined with the cream satin and fur trimmed. The two-seam sleeves have their fullness confined by two rows of shirrings; a very stylish wrist completion is given by large circular flaring cuffs that fall softly over the hands, a unique touch being imparted to the cuff by reversing one rounding end and tack-



2182



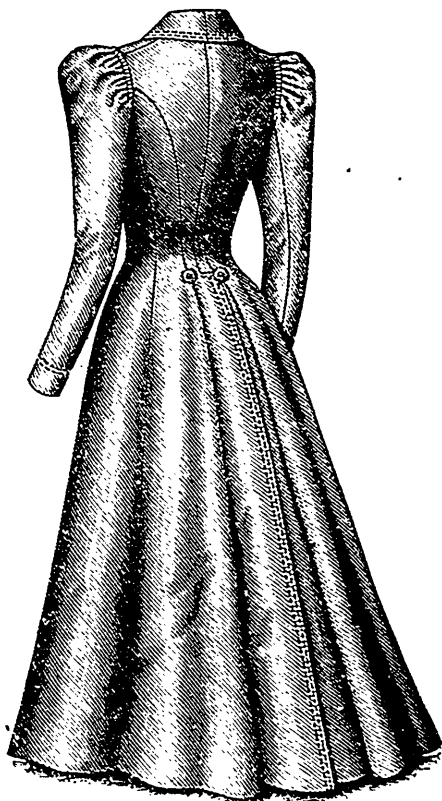
2182



2182

Front View.

LADIES' DOUBLE-BREADED LONG COAT, WITH REMOVABLE HOOD. (TO HAVE THE SLEEVES GATHERED OR PLAITED.) KNOWN AS THE NEWMARKET COAT. (For Description see Page 676.)



2182

Back View.

ing it back to show the satin lining. Fur gives an effective edge finish to the cuffs.

Broadcloth, brocade satin or corded silk may be chosen to handsomely develop this coat-wrap. A charming creation for evening wear was made of brocade white satin embroidered with gold threads with yellow satin overlaid with heavy lace for the collar, cuffs and revers; bands of sable completed the charming color scheme, the result proving most becoming and effective.