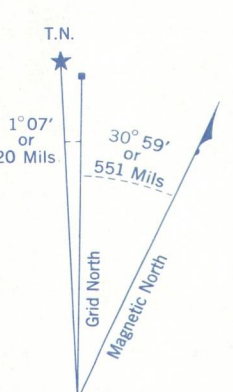
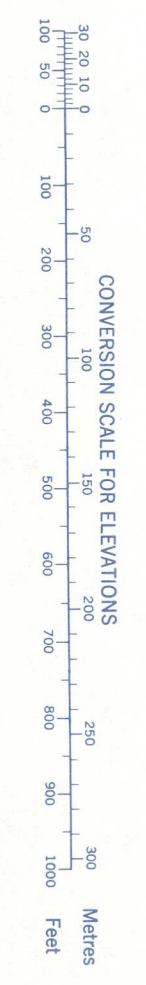
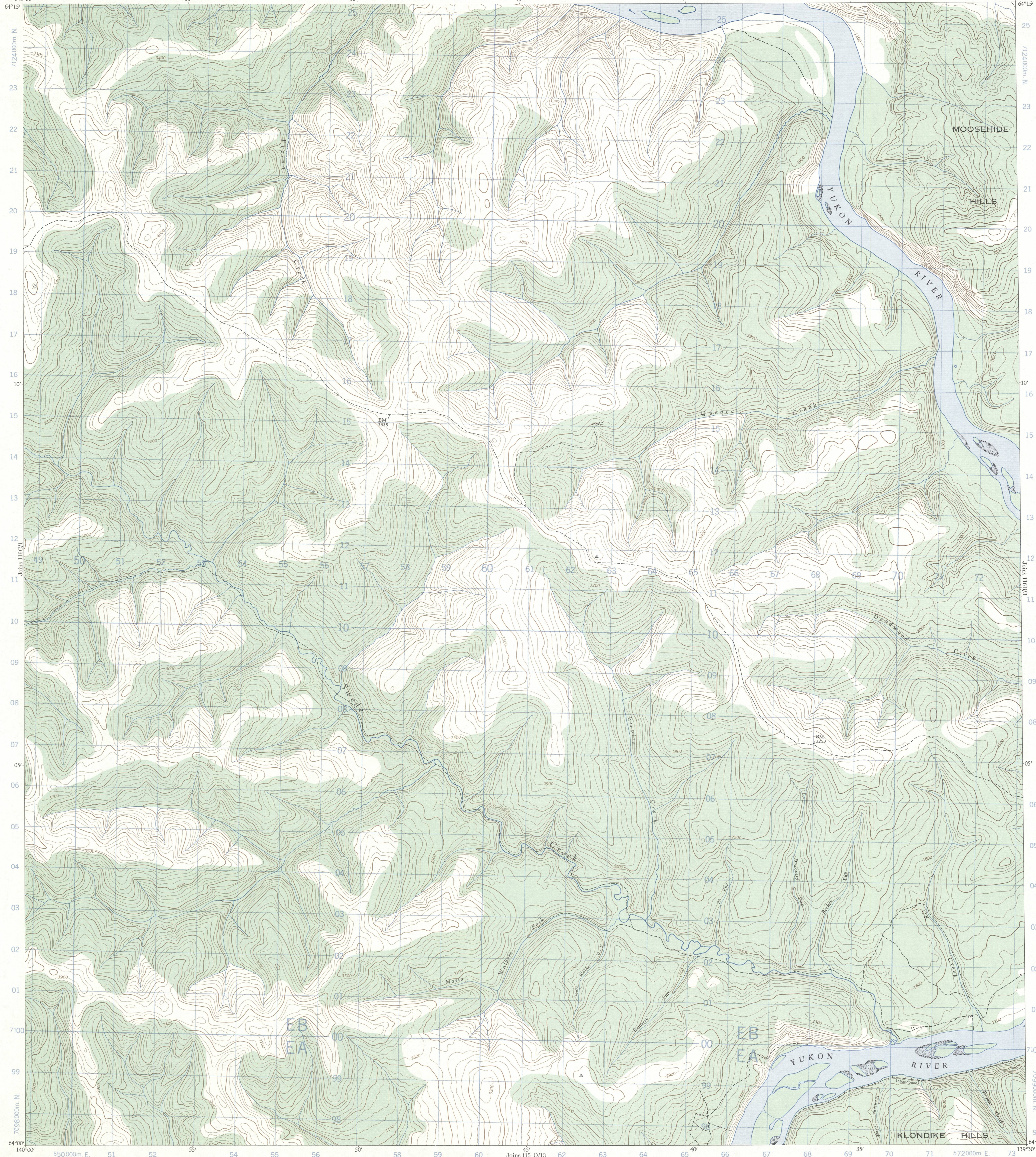


Refer to this map as: 116 B/4 EDITION 1 MCE SERIES A 722



Use diagram only to obtain numerical values. APPROXIMATE MEAN DECLINATION 1968 FOR CENTRE OF MAP. Annual change decreasing 3.6'

ONE THOUSAND METRE UNIVERSAL TRANSVERSE MERCATOR GRID

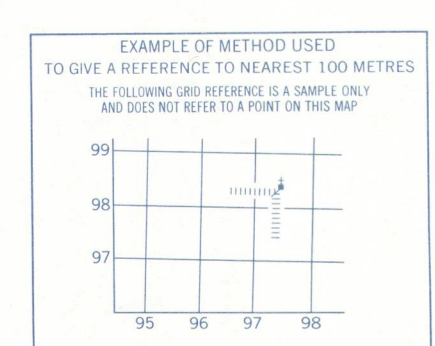
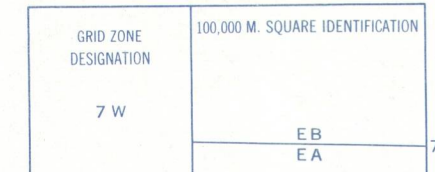
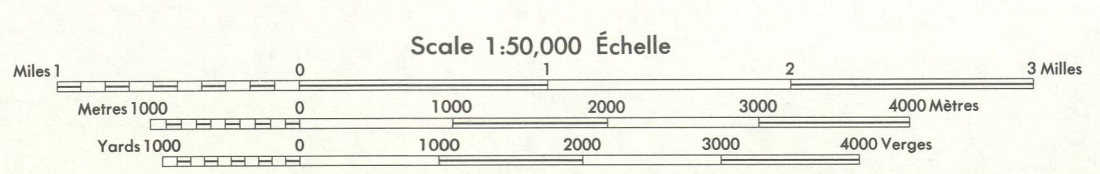


Table with columns for Reference Point, Easting, and Northing. Example point is Church (see above) with Easting 97 and Northing 98.

ZONE 7

SWEDE CREEK YUKON TERRITORY



Produced, 1955, by the SURVEYS AND MAPPING BRANCH, DEPARTMENT OF ENERGY, MINES AND RESOURCES, from aerial photographs taken in 1951. Printed in Canada.

McGILL UNIVERSITY MAP COLLECTION AUG 25 1969 GEOGRAPHY DEPARTMENT MONTREAL

Roads: car track, trail or portage. Routes: de terre, sentier ou portage.

This Provisional Map is equivalent to a standard map in accuracy of content. Some names on this map are not yet official. Corrections or additions are invited by the Surveys and Mapping Branch.

CONTOUR INTERVAL 100 FEET Elevations in Feet above Mean Sea Level North American Datum 1927 Transverse Mercator Projection

Cette carte provisoire équivaut à une carte régulière au point de vue de précision de l'information. Certains noms inscrits sur cette carte ne sont pas encore officiels. La Direction des Levés et de la Cartographie saurait gré au public de lui signaler corrections et additions.

ÉQUIDISTANCE DES COURBES 100 PIEDS Élévations en pieds au-dessus du niveau moyen de la mer Niveau de référence nord américain 1927 Projection Transverse de Mercator

Établie en 1955, par la DIRECTION DES LEVÉS ET DE LA CARTOGRAPHIE, MINISTÈRE DE L'ÉNERGIE, DES MINES ET DES RESSOURCES, à partir des photographies aériennes prises en 1951. Imprimée en 1958.

Ces cartes sont en vente au Bureau de distribution des cartes, Ministère de l'Énergie, des Mines et des Ressources, Ottawa.

SUPERSEDED EDITION