

Q. M. O. & O. RAILWAY. Eastern Division.

COMMENCING TUESDAY, FEBRUARY 11th.
Trains will be run on this Division as follows:—

Leave Hochelaga.	Arrive in Quebec.
EXPRESS..... 3.00 p.m.	10.10 p.m.
MIXED..... 7.10 a.m.	5.50 p.m.

RETURNING.

Leave Quebec.	Arrive in Montreal.
EXPRESS..... 12.45 p.m.	7.30 p.m.
MIXED..... 6.15 p.m.	10.10 a.m.

Trains leave Mile-End Station ten minutes later.
Tickets for sale at offices of Starnes, Leve & Alden, Agents, 202 St. James Street, and 156 Notre Dame Street, and at Hochelaga and Mile-End Stations.

J. T. PRINCE,

Gen'l Pass. Agent.

Feb'y 7th, 1879.

60 CHROMO, MOTTO, Gilt-Edge & Lilly cards, with name, 10c. Globe Print. Co., Northford, Ct.

JOHN MCARTHUR & SON OIL, LEAD, PAINT, COLOR & VARNISH MERCHANTS

IMPORTERS OF

English and Belgian Window Glass, Rolled, Rough and Polished Plate Glass, Colored, Plain and St. and Enamelled Sheet Glass.

PAINTERS' & ARTISTS' MATERIALS, BRUSHES
CHEMICALS, DYE STUFFS, NAVAL STORES, &c.

310, 312, 314 & 316 ST. PAUL ST.,

AND
255 & 257 COMMISSIONERS ST.

MONTREAL.

26-17-52-369

25 Fashionable Visiting Cards—no two alike, with name, 10c. Nassau Card Co., Nassau, N. Y.

D. MORRICE & CO.,

Ice Dealers,

24 VICTORIA SQUARE.

Prompt Delivery and Pure Ice.

377 a Month and expenses guaranteed to Agents
Outfit free. SHAW & CO., AUGUSTA, MAINE.

The Scientific Canadian

MECHANICS' MAGAZINE,

AND

PATENT OFFICE RECORD,

A MONTHLY JOURNAL

Devoted to the advancement and diffusion of
Practical Science, and the Education of
Mechanics.

THE ONLY SCIENTIFIC AND MECHANICAL PAPER
PUBLISHED IN THE DOMINION.

PUBLISHED BY

THE BURLAND-DESBARATS LITH. CO.

OFFICES OF PUBLICATION:

5 and 7 Bleury Street, Montreal.

G. B. BURLAND, General Manager.

F. N. BOXER, ARCHITECT & CIVIL ENGINEER, Editor.

TERMS:

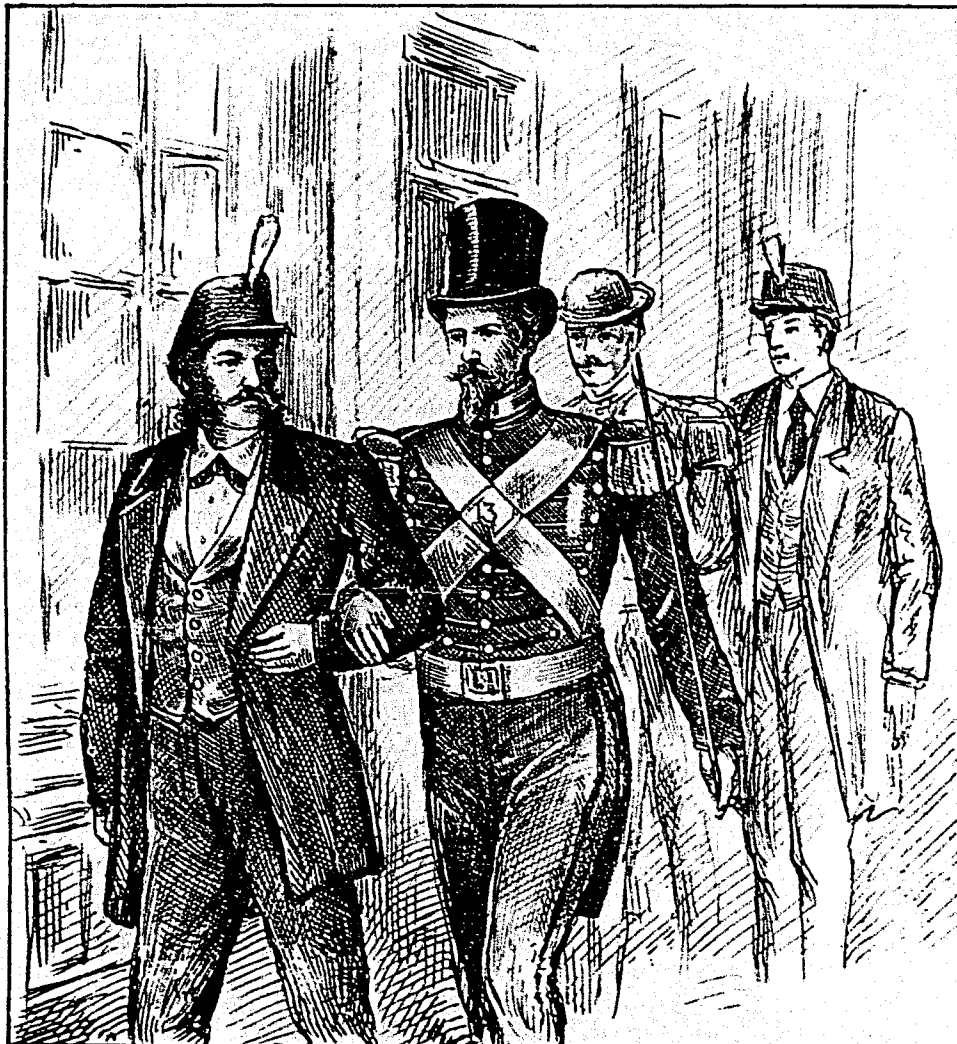
One copy, one year, including postage... \$2.00
One copy, six months, including postage... 1.10
Subscriptions to be paid in ADVANCE.

The following are our advertising rates:— For one monthly insertion, 10 cts. per line; for three months, 9 cts. per line; for six months, 8 cts. per line; for one year, 7 cts. per line; one page of illustration, including one column description, \$30; half-page of illustration, including half column description, \$20; quarter-page of illustration, including quarter column description, \$10.
10 per cent. off on cash payments.

INVENTIONS AND MACHINERY, &c., or other matter of an original, useful, and instructive character, and suitable for subject matter in the columns of the MAGAZINE, and not as an advertisement, will be illustrated at very reduced rates.

REMITTING MONEY.—All remittances of money should be in the form of postal-orders. When these are not available, send money by registered letters, checks or drafts, payable to our order. We can only undertake to become responsible for money when sent in either of the above ways.

This journal is the only Scientific and Mechanical Monthly published in Canada, and its value as an advertising medium for all matter connected with our Manufactories, Foundries, and Machine-Shops, and particularly to Inventors, is therefore apparent.



FRATERNIZING ON THE QUEEN'S BIRTHDAY.

THE BEST REMEDY FOR INDIGESTION.

TRADE **NORTON'S** MARK.

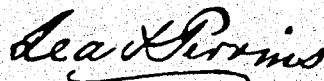


CAMOMILE PILLS are confidently recommended as a simple Remedy for Indigestion, which is the cause of nearly all the diseases to which we are subject, being a medicine so uniformly grateful and beneficial, that it is with justice called the "Natural Strengtheners of the Human Stomach."
"Norton's Pills" act as a powerful tonic and gentle aperient; are mild in their operation, safe under any circumstances, and thousands of persons can now bear testimony to the benefits to be derived from their use, as they have been a never-failing Family Friend for upwards of 45 years. Sold in Bottles at 1s. 1 1/2d., 2s. 9d., and 11s. each, by all Medicine Vendors throughout the World.

CAUTION.

Be sure and ask for "NORTON'S PILLS," and do not be persuaded to purchase an imitation.

In consequence of spurious imitations of
LEA AND PERRINS' SAUCE,
which are calculated to deceive the Public, Lea and Perrins have adopted A NEW LABEL, bearing their Signature, thus,



which is placed on every bottle of WORCESTERSHIRE SAUCE, and without which none is genuine.

Ask for LEA & PERRINS' Sauce, and see Name on Wrapper, Label, Bottle and Stopper. Wholesale and for Export by the Proprietors, Worcester; Cross and Blackwell, London, &c., &c.; and by Grocers and Oilmen throughout the World.

To be obtained of
MESSRS. J. M. DOUGLASS & CO., MONTREAL; MESSRS. URQUHART & CO., MONTREAL.

ROBERT MILLER,
Publisher, Book-Binder, Manufacturing and
WHOLESALE STATIONER.

IMPORTER OF

Wall Papers, Window Shades and
SCHOOL BOOKS,

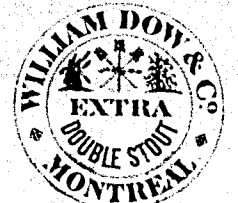
897, NOTRE-DAME STREET, MONTREAL.

14-6.

CARDS—10 Lilly of the Valley, 10 Scroll, 10 Engraved, 10 Transparent, 1 Model Love Letter, 1 Card Case, name on all, post-paid, 15c. 4 packs 50c.
WARD & CO., NORTHFORD, CONN.



WILLIAM DOW & CO. BREWERS and MALTSTERS MONTREAL.



Superior Pale and Brown Malt.
India Pale, and other Ales. Extra Double and Single Stout in Wood and Bottle. Shipping orders promptly executed. Families supplied. 18-6-52-282

E. N. FRESHMAN & BROS. Advertising Agents, 186 W. Fourth St., CINCINNATI, O.,

Are authorized to receive advertisements for this paper
Estimates furnished free upon application.

Send two stamps for our Advertisers' Manual



**JOHNSTONE'S
FLUID BEEF** is being adopted in the BRITISH, French, U. S., and Austrian Naval, Military and General hospitals. It is prescribed by the Queen's physician, and by every medical man who has tested its merits. It is the only essence known which contains all the nutritive constituents of beef, and is pronounced by scientific men everywhere to be the most perfect food for invalids ever introduced. Sold by Druggists and Grocers, 35c., 60c., and \$1.00.

THE Canadian Spectator,

A high-class Weekly Journal,

EDITED BY THE

Reverend A. J. BRAY.

SUBSCRIPTION: \$2.00 PER ANNUM.

OFFICES: 162 St. James Street, Montreal, and 4 Toronto Street, Toronto.

THE MILTON LEAGUE.

"Give me the liberty to know, to think to believe, and to utter freely, according to conscience, above all liberties.—Milton."

PUBLICATIONS:

- BRAY, REV. ALFRED J. The Churches of Christendom, cloth..... \$1.00
- BROWN, REV. J. BALDWIN. The Doctrine of Annihilation in the Light of the Gospel of Love..... 50
- DALE, REV. R. W. Protestantism: Its Ultimate Principles..... 60
- The Ten Commandments..... 60
- DAWSON, GEO., M.A. Prayers, and a Discourse on Prayer..... 50
- MCLEOD, NORMAN, D.D. Scotch Pebbles..... 15
- PITTLE, Rev. S. A. Echoes of Spoken Words..... 50

"Here is a new wave of literature, and of the deep and wide sea of religious thought, but sparkling and bright and gratefully refreshing."—Literary World.

50 Perfume, Snowflake, Chromo, Motto Cards, name in gold & jet, 10c. G. A. SPRING, E. Wallingford, Ct.



INTERCOLONIAL RAILWAY.

1878-79.

Winter Arrangements.

EXPRESS PASSENGER TRAINS run DAILY except Sundays) as follows:—

Leave Point Levi.....	8.00 A.M.
" River du Loup.....	2.00 P.M.
(Arrive Trois Piqueles (Dinner).....	3.00 "
" Rimouski.....	4.49 "
" Campbellton (Supper).....	10.00 "
" Dalhousie.....	10.21 "
" Bathurst.....	12.28 A.M.
" Newmarket.....	2.10 "
" Moncton.....	5.00 "
" St. John.....	9.15 "
" Halifax.....	1.30 P.M.

Pullman Cars on Express Trains.
These Trains connect at Point Levi with the Grand Trunk Trains leaving Montreal at 9.45 o'clock p.m.
Pullman Car leaving Point Levi on Tuesday, Thursday and Saturday, runs through to Halifax, and on Monday, Wednesday and Friday to St. John.

For information in regard to passenger fares, tickets, rates of freight, train arrangements, &c., apply to

G. W. ROBINSON,
Agent,
177 St. James Street,
C. J. BRIDGES,
General Supt. of Gov't Ry's.

Montreal, 18th Nov., 1878.

25 FANCY CARDS with Name 10c. Plain or Gold, Agents' Outfit 10c. 150 Styles. Hull & Co., Hudson, N. Y.

The Canadian Illustrated News is printed and published by the BURLAND-DESBARATS LITHOGRAPHIC COMPANY (LIMITED), at its offices, Nos. 5 and 7 Bleury Street, Montreal.