

CHESSE.

All communications for this department should be addressed— CHESSE EDITOR, Windsor, N. S.

The proprietors of THE CRITIC offer two prizes—to consist of books on Chess—to those subscribers who shall send in the greatest number of correct solutions during the current year. No entrance fee required.

TO CORRESPONDENTS.

J. Downey, Halifax.—Ten days for insertion in second issue from date of publishing Problem.

Mrs. H. Mosely.—You are correct. Printer's error. Much obliged.

ERRATA.—In Problem No. 71, Rook at Black Q's sq, should be a black R.

Fred Mackie (East Ratford, Eng.)—Welcome to competition. Thanks. Solutions to Problems 64 and 65 correct.

By an oversight there are two Problems numbered 68, competitors will please call them 68a, 68b. Credit will be given accordingly.

Solution to 68b.—B to Ks Kt 3.

Correct solutions to the above received from Mrs. H. Mosely and J. W. Wallace.

SKETCHES FROM FOREIGN TRAVELS.

To have judged the man by his appearance would have been the greatest injustice, for he was as pleasant and gentle a companion as one might well wish to meet, never giving the slightest offence by word or gesture.

At the next board sat a pair of octogenarians, who spent the greater part of the day, playing Chess in anticipation of the final checkmate. Their eyes were dim, their comprehension slow. How often in a game did one place a piece en prise and the other not see it? How often would they over-look a mate in two, nay, even mates on the move? Still they would play away at the game, and enjoy it probably more than masters.

At the last board sat a middle-aged descendant of Shem, whose hair seemed to have found uncomfortable its location on top of the head, for though there was certainly plenty of room, still it had vacated its natural premises and settled in the neighborhood of the mouth, may be on account of greater facilities for irrigation.

Here is an end game as a sample of their strategy:

WHITE BLACK
K at KB sq. K at Q sq.
Q at K3 Q at KKt3
Rs at KR, QR Rs at KR, QR
Bs at QKt3, Q2 B at Q3

Kt at Q sq. Kt at QB3, K2
Ps at QR2, QB2, KB3 Ps at QR2, QKt2, QB2, KB3, KKt2, KR2

White, having the move, played 1B to K6, and black, bent on gobbling, answered 1 Q takes P, whereupon followed

2R to B sq. 2Q to R5
3R to B4 3Q takes Kt ch.
4K to Kt2

At this juncture Black opened his eyes wide, knocked the pieces over in disgust, changed the colors, and started the 47th game of the day, of which the score was preserved, notwithstanding its insignificance; and here it is.

WHITE BLACK
1 P to K4 P to K4
2 Kt to QB3 Kt to KB3
3 P to KB4 P takes P
4 P to K5 Kt to Kt sq.
5 F to Q4 P to KKt4
6 Kt to B3 P to KKt5
7 B to QB4 P takes Kt
8 Castles B to R3
9 Q takes P Q to K2??
10 QB takes P B takes B
11 Q takes B Kt takes KB3?

..... Unaware of the mine under his feet, which is going to raise him off his base.
12 Kt to Q5 Q to B sq.
13 Kt takes P ch. K to Q sq.
14 Kt takes R KKt to K 2.
15 P to K6 P to Q4
16 Q to B7 ch. K to K sq.
17 P takes P ch. Q takes P
18 R takes Q K takes R
19 B takes P ch. K to B3
20 R takes KB ch. K to Kt2
21 Q to Kt3 ch. Kt to Kt3
22 R to B7 ch. K to R3
23 Q to K3 ch. K to R4
24 B to B3 ch. B m.

.....If K to R5, 25 Q to R6 ch.
25 R to B5 ch. K to R5
26 P to Kt3 K to R6
27 B to Kt2 mate.

By this time the quartette was on the point of suffocating, and only by a hasty retreat avoided furnishing an addition to the Katzenellenbogen cemetery. Dreams of arrogant Bishops and murdered Queens stole into their sleep, so that the rising sun woke up four miserable Leings. Fortunately, the tramp in the morning air soon counterbalanced the nauseous effects of the past evening.

—Chess Chronicle.

DRAUGHTS-CHECKERS

All Checker communications and exchanges should be addressed to W. Forsyth, 36 Grafton Street, Halifax.

The proprietors of THE CRITIC offer two prizes—to consist of books on Checkers—to those subscribers who shall send in the greatest number of correct solutions during the current year. No entrance fee required.

SOLUTIONS.

PROBLEM 91.—The position was:—black men 1, 4, 15, 18, 24; white men 7, 13, 14, 21, 26; white to play and draw.

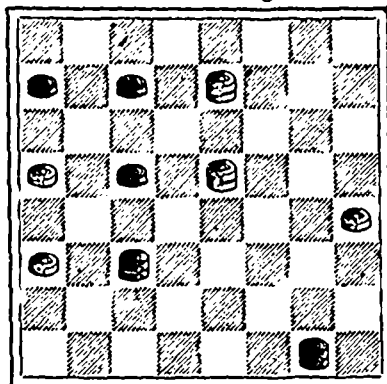
7 3 14 9 11 15 22 25
24-27 1-5 27-31 19-24
3 7 7 11 15 22 26 22
15-19 5-14 31-27 drawn.

PROBLEM 92.—The position was:—black man 24, kgs, 28, 32; white kgs, 23, 26, 31; white to move and win.

23 19 27-32 22 18 24-27
32-27 31 26 27-32 26-31
26 22 32-27 18 23 w. wins.

PROBLEM No. 95.

An ending that occurred in the Inter-provincial match between Messrs. Forsyth and Gaskin, February 22nd. Black men 5, 6, 14, kgs. 21, 32.



White men 13, 20, 21, kgs. 7, 15. White to play and win.

The Inter-Provincial checker match between our Checker Editor, Wm. Forsyth, and Henry Gaskin, of St. John, N. B., was concluded on Wednesday. Following is the score:—

Table with columns: No., Name, Won by Forsyth, Gaskin, Drawn. Lists 50 games with results.

Blank forms, (suitable for both Chess and Checkers), for copying down problems, positions, endings, etc. Fifty for 25c, post free. Small sheets, numbered, and with appropriate headings, for recording games. Twenty-five for 15c. For sale at Critic Office, Halifax.

NATIONAL COLONIZATION LOTTERY.

Under the Patronage of Rev. Father Labelle Established in 1884, under the Act of Quebec, 32 Vict., Chap. 38, for the Benefit of the Diocesan Societies of Colonization of the Province of Quebec.

CLASS D.

The 21st Monthly Drawing will take place On WEDNESDAY, March 20th, 1889. At 2 o'clock, p.m.

PRIZES VALUE, \$50,000.

Capital Prize—1 Real Estate worth \$5,000.00

LIST OF PRIZES.

Table listing various prizes and their values, including Real Estate, Furniture Sets, Gold Watches, and Silver Watches.

2307 Prizes worth \$50,000.00

TICKETS \$1.00.

Offers are made to all winners to pay the prizes cash, less a commission of 10 per cent. Winners' names not published unless specially authorized.

DRAWINGS ON THE THIRD WEDNESDAY OF EVERY MONTH.

S. E. LEFEBVRE, Secretary, OFFICES—19 ST. JAMES ST., MONTREAL, CA.

FARM FOR SALE.

A splendid Fruit Farm, in a first-class neighborhood. The farm consists of 70 acres of land, 60 of which is choice upland and 10 meadow. Also, a wood lot of 25 acres, 2 miles from the farm. The place cuts 30 tons of hay and yields 200 bushels Grain, 500 or 600 bushels of Potatoes, and 200 to 300 bushels of Vegetables, besides a great quantity of small fruit and Apples.

Wiltshire & Co., KENTVILLE.

DRY GOODS!

STAPLE & FANCY.

FOREIGN AND DOMESTIC.

GREAT VARIETY.

New Goods continually arriving at

PRICES LOWER THAN EVER,

—AT—

"The BRANCH"

JOHN W. WALLACE,

CORNER GRANVILLE & DUKE STS.

Printed by Halifax Printing Co., 161 Hollis Street, Halifax, N. S.