

IT PAYS TO PAY CASH
NO ADVANCE IN PRICES, YOU CAN BUY NOW AS YOU HAVE BOUGHT.

WOMEN'S COTTON OVERALLS.
 A small lot about 3 dozen only, made of strong American Cotton, showing fine Black and White checks, Black and White stripes, plain Navy and others in Navy with white spots; well made and perfectly finished. Regular 75c. **Friday, Saturday and Monday 66c.**

NEW DRESS GOODS.
 Velour Serges Will Be Popular This Fall.

We wish to direct your attention to this very attractive Dress Material, 42 inches wide; something different from the ordinary Serge, a much softer finish and having a far prettier appearance than the shades range is complete with all the most desired colors in Brown, Cardinal, Cerise V. Rose, Navy, New Blue, Priddy Green, Purple and Black. Let your fall dress be made of "Velour Serge." Reg. 30c. **Friday, Saturday & Mon. 72c.**

GLOVES!

LADIES' LONG WHITE KID GLOVES.
 Reg. \$1.50 for 98c.

They come in 12 and 16 button lengths; White and Black Kid. When you look at the original price it will give you an idea of the quality of kid you are getting for this extremely low price. **Friday, Saturday and Monday, per pair 98c.**

FRAMED PICTURES
 A lot of nicely assorted subjects, with broad gilt frames, all ready to hang up. Come early and have a look at these, just what you want to brighten up your rooms. **Friday, Saturday & Monday 79c.**

MEN'S TWEED CAPS
 English and American makes, showing stylishly cut caps in a wide range of Tweed and Cloth makes; large and medium peaks; good silk linings. Reg. up to 75c. **Friday, Saturday and Monday 67c.**

AFTER SCHOOL
 You will want a game of base ball; how is your outfit, boys? Don't you want a Bat for . . . 5c. Or a Ball for . . . 5c. A pair of Mitts for . . . 15c. Or a strong Mask for . . . 15c. Get an outfit now before they are all gone.

BLAY SHEETING.
 2 pieces of fine Twilled in Bleached Sheeting; best English manufacture; 70 inches wide; extra strong and dependable in wear. Reg. 35c. **Friday, Saturday & Monday 31c.**

PURE WHITE SHEETING.
 80 yards of Superior White Sheeting, fine twilled, 90 inches wide. This is a good family sheeting, guaranteed for wear, one of the best values we have handled. Reg. 85c. **Friday, Saturday & Monday 74c.**

Our method of buying for cash, and buying in large quantities, enables us to be in a position to always offer the very best values to our customers. Comparison throws into bold relief this fact. Witness the ever-increasing crowd of eager shoppers daily attending our well conducted Sales.



REINFORCEMENTS IN THE BARGAIN LINE.

Ladies' Lace Collars.
 A lot of special values in Peter Pan styles, and a lot of stylish stock collars with jabot attached; many others in fine Lawn with lace and insertion finish. Very dainty Neckwear. **Friday, Saturday and Monday 12c.**

BUSINESS APRONS.
 Made of finest quality Black Satin, with two large pocket shaped band, and nicely cut; these are a special lot which we have just opened. **Reg. 65c. Special Friday, Saturday and Monday 52c.**

JOB LINE.
OF INFANTS' SILK & WOOL SINGLET.
 If you want something very soft and warm for the baby, have a look at these; sizes to fit from 6 months up to 4 years old; buttoned in front, easy to put on; high neck, long sleeves. **Values to 35c. Friday, Saturday & Mon. 19c.**

Corduroy Velvet Tams.
 All New! London Styles, in shades of Saxe, Navy and Light Brown; very pretty effects; others in Cloth in shades of Crimson, Navy, Saxe and White. **Values to 50c. Friday, Saturday and Monday 38c.**

GLOVES FOR THE HOUSEWIFE.
 Made of strong Twilled Cotton, fleeced inside and Jersey ribbed wrist; just what you want working about the kitchen. Try a pair. **Friday, Saturday & Monday, per pair 12c.**

Children's Knickers.
 These come in a wide range of sizes, fitting children from 2 to 10 years; made of pure White American Flannelette. **Special Friday, Saturday and Monday 13c.**

LADIES' & MISSES' SWEATER COATS.
 By far the prettiest and most effective style on the street to-day; Slip-over style, showing the new Balkan style, turned down collar and wool knot scarf; shades of Emerald, White and Tan, Crimson and Royal. **Sizes 34, 36 and 38 inch bust. Regular \$2.75. Friday, Saturday & Monday 2.48**

HAT PINS, 13c. PER PAIR.
 Black with Brilliant settings; others with Cameo, firmly attached to extra strong steel pins; 7 inches long, put up in pairs. **Friday, Saturday and Monday, 2 for 13c.**

HAIR NETS.
 Parisian Hair Nets, in light, medium and dark Browns; also Black, invisible style, with and without elastic; fit perfectly and conform to almost any shape. **Special Friday, Saturday and Monday, 2 for 5c.**

LADIES' COMBINATIONS.
 Made of fine ribbed Jersey, now neck and wing sleeve; ankle length; others with high neck and buttoned in front; lace trimmed yoke, perfect fitting and a nice weight for present wear. **Special Friday, Saturday and Mon. 34c.**

2 SPECIALS IN SHIRTS.

MEN'S SILK FRONT SHIRTS.
 These are a special lot, we have just opened. Body and sleeves of good English long cut, fancy cuffs and front, perfect fitting. **Sizes from 14 to 16 1/2. Reg. \$1.20. Friday, Saturday and Monday 98c.**

MEN'S ARMY GREY FLANNEL SHIRTS.
 In this lot all sizes except 16; Linen band, all-wool flannel; perfect stitching and generously cut; a shirt guaranteed to wear well and wash well. **Reg. \$2.50. Friday, Saturday and Monday 2.25**

HOSIERY SPECIALS offer GREAT VALUE!

LADIES' EMBROIDERED HOSE.
 18 dozen of plain Black Cashmere Hose, with pretty colored embroidered ankles. This lot includes our regular 60c. values. **Special Friday, Saturday and Monday 42c.**

MEN'S BLACK HALF HOSE.
 6 dozen of Men's plain Black Cashmere Socks; the quantity here is small; we hasten these at a special price for . . . **Friday, Saturday & Mon. 25c.**

LADIES' CASHMERE HOSE.
 12 dozen of Ladies' plain and ribbed fast Black Cashmere Hose. These are excellent value and just the weight for present wear; double heels pad toes, assorted sizes. **Reg. up to 40c. Friday, Saturday and Monday 32c.**

LADIES' PLAIN CASHMERE HOSE.
 10 dozen pairs of fast Black plain Cashmere Hose; a job line; wish we could get some more of these, they are unusual good value. **Special Friday, Saturday & Mon. 22c.**

GENT'S HALF HOSE.
 Nor have the requirements in the Men's line been forgotten. We have secured some excellent values in Socks of good Cashmere make, in Black, Grey, Brown and Emerald; values to 60c. **Friday, Saturday and Monday 38c.**

CHILDREN'S BOOTS.
 42 pairs of these in good Black Dongola, buttoned style; spring heel and patent toe, perfect foot-form for the children; sizes 6, 7 and 8 only. **Reg. \$1.00. Friday, Saturday and Monday 92c.**

GENT'S LINEN COLLARS.
 The popular "Baden Powder" Brand; height 1 1/2 inch, 2 inch and 2 1/2 inch; perfect fitting, lock front; good 4-fold Linen. **Reg. 20c. Friday, Saturday and Monday 15c.**

WALL POCKETS, 5c. EACH.
 Well worth 15c. each, made of strong Jean Drill, with red piped and binding all round; receptacles for holding brush and comb, etc. Slippers and other articles, usually thrown around. These little pockets will be found very handy. **Special Friday, Sat. and Mon. 5c.**

Ladies' Umbrellas.
 4 dozen of these, good fast Black covering, rigid frame, colored handles, in a variety of makes; steel tube. Our regular \$1.00. **Friday and Saturday 86c.**

Something Very Special in this Display of Children's & Misses' FALL DRESSES.

They show a wide range of makes in Serges, Cloths, Lustras, Cashmires, etc., in such pretty shades as Brown, Navy, Grey, Saxe, V. Rose, Fawn and Checks; some with belts, others with girlish; all low neck effect, beautifully trimmed with braid, pipings, etc. We bought the entire lot at a Bargain Price and now offer them to you at two special prices. **Friday, Saturday and Monday.**
 24, 27, 30 inch **\$2.40**
 33, 36, 39 inch **\$2.75**

OUR REMNANT SALE
 continues merrily on, hundreds of delightful purchasers sounding the praises of this great sale. The week-end will strip us of many of the gems of this Great Sale. Come along with the crowd **Friday, Saturday & Monday.**

WE SELL FOR LESS

DEVONSHIRE NAVY SERGE
 The best Serge for boys, fast color, unequalled for wear; 27 inches wide, would make fine school dresses for the girls or costume or costume skirts for the ladies. We offer two special prices:
 Reg. 60c. for **52c.**
 Reg. 85c. for **75c.**

THEY'RE HERE!
 Another Lot of Our Special Piano Squares.
 We were fortunate in getting these from across the water; not many, 'tis true, but enough to make a few dozen homes the brighter in appearance; made of good Tapestry, beautiful color tones, elegant designs; look at the size of them 54 x 72; would make an ideal rug for Parlor, Diningroom or Bedroom. Come early and pick the prettiest one. **Reg. \$2.30. Friday, Saturday and Monday 3.05**

TOWELING ENDS.
 A full yard long made of heavy linen crash, with colored striped border, excellent for kitchen use, for cup towels, dish cloths, etc. **Special Friday, Saturday and Monday 9c. each**

MEN'S INITIALED HANDKERCHIEFS.
 A better wearing handkerchief than silk, stronger and more durable, medium size, not bulky, hemstitched edge and nicely embroidered; initial in corner of handkerchief, with silky finish. **Reg. 20c. 16c. Fri. Sat. and Monday 16c.**

SCHOOL SUPPLIES.
 We have opened a whole case lot of Exercise Books, Scribblers, Drawing Books and Note Books, which we mark at a special low price. **Friday, Saturday and Monday 4c. each**

SCHOOL BAGS.
 The scholars are lining up for another term. What about a good serviceable school bag for the boy or girl? They want something to stand the wet weather, just like those we are now offering. **Reg. 35c. 29c. Fri. Sat. and Mon. 29c. Reg. 65c. Friday, Saturday and Monday 35c.**

TURKISH TOWELING.
 140 yards of Unbleached and pure White Turkish Toweling, 15 inches wide, close and heavy in make; a few yards are handy about the house. **Special Friday, Saturday and Monday, per yard 13c.**

BATHS MATS.
 Made of heavy Turkish finish; size 18 x 30, bound edges, colored border and lettered centre. Don't be without one, a necessity in the bathroom. **Special Friday, Saturday and Monday 32c.**

"RESCO" GARTERS FOR MEN.
 The Standard and the perfect 1/2 Hose Support; always secure and so easy fitting; Nickel mountings and strong elastic. **Special Friday, Saturday and Monday per pair 13c.**

Russians Have Many Big Forts In Their Path.

THREE LINES OF LAKES AND BIG RIVER ARE FORTIFIED.
 London, Aug. 25.—A despatch to the Daily Mail from St. Petersburg, says: "The German defence in East Prussia is based on four parallel and strongly fortified lines, running north and south. Each is supported by natural obstacles. The foremost three lines are distinct ropes of numerous lakes. The fourth and strongest defence line is the Vistula River, extending from the Russian frontier to the Baltic. "Outside these defence lines, the Germans have on the northeast the very strong fortress of Koenigsberg, with fortified advance positions at Libau and Tapiau. This is situated on the bank of the Russian line, and must be invested, causing the detachment of a considerable force. "The foremost three defence lines are extensively fortified. There are important and permanent fortifications at Allenstein and Boyen, and the whole is filled with lakes, leaving only comparatively narrow defiles for the advancing troops. The country is full of fortifications, partly provisional and partly fieldworks, most of which are armed with heavy guns. A frontal attack would be a very different task. "The Vistula, from 500 to 1,000 yds. wide, is guarded by six fortresses. The largest are at Thorn in the south and at Danzig in the north. Between them are Fordon, Kulm, Fraudentz and Marienburg. "A man entitled to rank among the first as an organizer of victory is compelled to remain far from the battle field. He is General Soukhomlinoff, the Russian Kitchener, who is now reorganizing the Russian armies. The armies have been irreproachably equipped, and the spirit of the men is the same as the spirit of the nation. "The defeat of three German army corps in northeastern Prussia was converted into a rout by the timely arrival of another army coming from Warsaw in the rear of the enemy's position. The Warsaw army, which was very powerful, completely turned the German position at Mazur lakes, and while extending its operations over a wide front westward, headed toward Kallenstein. The German 20th army corps thus became a nut between stout crackers. The commanders of both Russian armies acted with energy and promptitude, worthy executives of the brain dominating the whole army. "In Galicia the best of Russian strategy will be on a level with the victorious plan adopted farther north. The Austrians in Lemberg possibly will be taken in a similar vice. This may be inferred from the fact that one army is advancing from the southeast, as is shown by the fact that nine Russian cavalry squadrons have routed the entire Austrian cavalry division at Plukhow. "The Austrian force retreating from Vladimir Volyhnskiy, Russia, 17 miles from the frontier, towards Sokel, in Galicia, Austria, probably has been cut off. Grand Duke Michael, the Emperor's brother, has returned from abroad and is going to the front. "The Russian Embassy in London while pleased over the victory at Gumbinnen, states that it feels bound to warn the English press not to exaggerate the consequences of the victory."

ROSSLEY



THEATRE.
 The Greatest Novelty of Season, **MRS. ROSSLEY'S REAL LIVING PICTURES,** In Military Drama Without Words, **THE CALL TO ARMS FOR KING AND COUNTRY.** Spectacular and Artistic.

ALL NEW MOTION PICTURES. The Fires of Driftwood—Vita-graph. A Girl's Faith—Lubin. Bloomer and the Tango. The Rapids of Kalvitch, Russia. 1,000 feet of Latest Graphic.

SHOE SALE.

We are now offering thirty-seven lines of Men's, Women's and Children's Fine Boots and Shoes at greatly reduced prices, the reason for this sale being:—Having been sold out of certain sizes, and the manufacturer not being able to duplicate the same goods in time to suit our needs, we have decided to sell out the remaining sizes at a sacrifice.

IS YOUR SIZE HERE!
WHITE HOUSE SHOE FOR WOMEN
 500 pairs of Ladies' Low Shoes, in all leathers. Regular prices \$4.00, \$3.50 and \$3.00. Now \$1.50, \$2.00 and \$2.50. Sizes 1, 1 1/2, 2, 2 1/2, 3, 3 1/2, 4, 4 1/2.

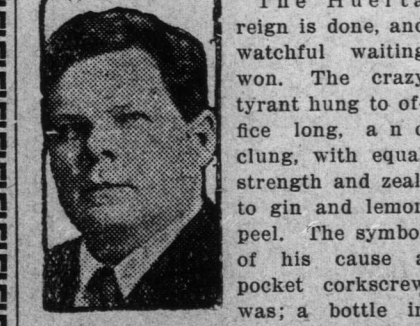
WHITE HOUSE SHOE FOR MEN
 100 pairs Men's Low Shoes, Black and Tan, Button and Laced. Regular prices \$4.50, \$5.00 and \$5.50. Now \$3.50, \$3.75, \$4.00 and \$4.50.

WHITE HOUSE SHOE FOR MEN
 200 pairs Men's Boots, Tan and Black, Button and Laced. Regular prices \$6.00, \$5.50, \$5.00. Now \$3.50, \$4.00, \$4.50.

SCHOOL BOOTS.
 Our School Boots are just in. Try us on School Foots. Double wear in each pair. We make a specialty of Repairing. Old shoes made like new. We use the latest machinery for Shoe Repairing.

F. SMALLWOOD, THE HOME OF GOOD SHOES.
FOR SALE—That Dwelling House No. 3 Mullock St.; possession immediately. Apply to WINTER & WINTER, Commercial Chambers, aug31.14

Watchful Waiting.



The Huerta reign is done, and watchful waiting won. The crazy tyrant hung to office long, a d d clung, with equal strength and zeal, to gin and lemon peel. The symbol of his cause a pocket corkscrew was; a bottle in his hand, he ruled his bleeding land. What sort of men are they who'd tolerate the sway of such a drunken freak? Are they insane or weak? But watchful waiting won, and toward the rising sun the jim-jam despot sailed, and Justice must have waited. All loaded down with wealth he'd swiped by force and stealth, he sailed across the sea to riot in Paris, or booze in London slums with kindred thirsty huns. The man whose hands were red with blood of countless dead, the man of concrete heart, was suffered to depart from that poor land he looted, and harried, rent and robbed. Was there no dungeon deep where slimy reptiles creep? Was there no gallows tree or ax for such as he? Ah, well, the tyrant's gone, and there perhaps will dawn a brighter, better day—let's hope so, anyway. Peace has a tanning now—let's hope so, anyhow. But should the dove depart, and should the fireworks start, with bloodshed, as before, we'll watch and wait some more.

POLISHING CLOTHS.
 3 dozen of the "Ritz" Polishing Cloths; size 22 x 24; a couple of these about the house will be found very serviceable. **Special Friday, Saturday and Monday 11c.**

Table Napkins.
 8 dozen of pure White Damask Table Napkins, Mercers' low finish, hemmed; size 20 x 20, very pretty patterns; these have that nice soft finish so free from dressing; usually sold at 20c. **Friday, Saturday & Monday 14c.**

SUIT CASES.
 2 lines of dependable Suit Cases, the cheaper grade with Brown Canvas covering, rigid frame, double clasp and metal corners. Size 6 x 12 x 24. A good knockabout Traveling Case. **Reg. \$1.40. Friday, Saturday & Monday 1.08**

This better make is more strongly finished; comes in dark Tan shade, with two heavy straps scouring in leather covered corners; a most respectable looking traveling Suit Case, with lots of room, measuring 8 x 12 x 24. **Reg. \$3.50. Friday, Saturday and Monday 3.22**