

OF CANADA
LOAN
limited amount to pay
5%.
ence invited.
ON & COMPANY
Building, Toronto

DU NEED
ITURE
ge photo-illustrated
D. It is free to you.
ITURE CO. LIMITED
b, Ontario

ED GLASS
ORIAL
DOWS
ates on request
or sixty years
LAND LIMITED
AVE TORONTO

BRASS GOODS
argest manufacturers in
n over the ecclesiastical
s, Ltd., and also the Chad-
o of Hamilton. Saw for
MANUFACTURING CO.
nd St. West, Toronto

DON &
ASHIRE
IRE
CE COMPANY
TED
\$30,500,000

Shopping in
Toronto
is really delight-
ful, due to the
many beautiful
retail stores,
where the best in
modern styles
and designs are
always on exhibi-
tion at moder-
ate prices. Many
people find that
it is possible to
save the expense
of a trip on their
ng through buying in
Opportunity
to the City and make a
ut of what would other-
wise be a difficult task. No need
ere to stay. The Walker
amous Hotel, is the res-
me for ladies. Just a few
m the principal stores.
facilities for handling
HOUSE, TORONTO
The House of Plenty
and Reasonable Rates

JONES & WILLIS

Ecclesiastical Art Workers
Wood & Stone Carving, Metal Work, Stained
Glass, Mosaics, & Paintings, Embroideries.
MEMORIAL WINDOWS and TABLETS.
Write for Illustrations.
48 Great Russell St., London, Eng.
Also at Birmingham and Liverpool.

E. C. WHITNEY

Wordsley, Staffs., England
**CASSOCK, SURPLICE STOLE AND
CLERICAL CLOTHING MANUFACTURER**

BEGS to announce that owing to
War Requirements, together with
increased cost of production, all Price
Lists are cancelled, but special quota-
tions and samples will be gladly sent
on application.

Enquiries Solicited, and Comparison of
Value Invited.

MOWBRAYS'

Parochialia Catalogue

**AN ILLUSTRATED LIST OF PUBLI-
CATIONS, REGISTERS, FORMS, &c.,**
required by the Clergy for their Min-
istrations in Church and Parish.

"In it is found, displayed to the best
advantage and lucidly classified, all
the needs of a parish church and or-
ganization—registers, cards, notice
boards and notices, tables of affinity
and Episcopal succession, broadsheets,
choir forms and notices, and litera-
ture for Sunday-schools (including
prizes), Conformation, the Eucharist,
and portable Altars."—*The Guardian.*

A Copy of this Catalogue will be gladly
sent, post free upon application.

A. R. MOWBRAY & Co.,
LIMITED
38 Margaret Street, LONDON, England,
and High Street, Oxford.

Union Bank of Canada

810 Branches in Canada
Total Assets - \$110,000,000
D. M. NEEVE, Manager
Main Branch - Toronto

REFINEMENT

In Laundry Work.

The domestic finish given collars and cuffs—the hand
laundering given silk shirts and other fine and delicate
materials the shaping of socks—the repairing, ironing
and finishing mean the production of the highest refine-
ment in laundry work. This service is yours at ordinary
cost—why not avail yourself of it. Telephone us to-day.
NEW METHOD LAUNDRY
The Real White Way. Telephone Main 7486

THREE PRIZES

\$50 \$30 \$20

are offered by the Canadian Churchman for the three best
papers on the subject:

**The Mission of Religious Journalism
and How to Make it Effective.**

Competition open to all subscribers. Essays to be typewritten and
about 4,000 words. Competition closes December 31st. Names not to
appear on essays but sent to Editor. Address:—

Editor of Canadian Churchman, 613 Continental Life Bldg., Toronto

CHURCH OF ENGLAND

DEACONESS AND MISSIONARY TRAINING HOUSE

Thorough Training given. Lectures in Scripture Knowledge; Church Teaching; Medicine (by
qualified physicians); Practical Nursing under supervision of Resident Graduate Nurse.
Practical Christian Work. Fall Term opens September 25th.

179 Gerrard St. E., Toronto

Principal, MISS T. A. CONNELL

HAVERGAL COLLEGE

Main School

354 JARVIS ST.

Honor,
Matriculation,
Art,
Music

Coverley House

372 JARVIS ST.

Domestic
Science
Gymnastic
Training
Course
Home
Nursing

The Hill School

51 ST. CLAIR AVE.
WEST

Boarding
and Day
School
Large
Grounds
Games

Junior School

278 BLOOR ST. W.

(Late Westbourne)

Preparatory and
Kindergarten
for Boys and Girls

MISS KNOX, PRINCIPAL, TORONTO



**MORRIS
AND
BURNE-JONES
MEMORIAL WINDOWS**
THE MOST BEAUTIFUL
STAINED GLASS IN THE
WORLD
MORRIS & COMPANY, LTD.
449 OXFORD STREET
LONDON ENGLAND



THRIFT

Money is needed—for the war
—for home emergencies—for
the growing cost of living—
for a business start—for a
holiday—for old age—for all
purposes.

Increase your saving, hold
down your spending, open a
Savings Account at The
Bank of Toronto. Savings
Accounts for small or large
sums invited at all branches
of this Bank.

11 Branches in Toronto
116 Branches in Canada

Capital, \$5,000,000 Reserved Funds, \$6,508,000

THE BANK OF TORONTO

THOS. F. HOW

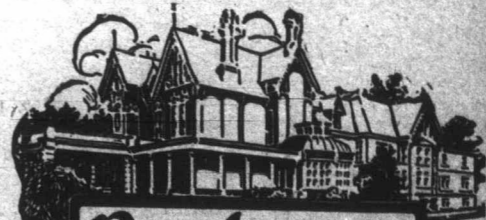
General Manager



INCORPORATED
1855

Bishop Strachan School

ESTABLISHED
OVER
FIFTY
YEARS
College Heights, Toronto
**A Church Residential and Day
School for Girls** The most complete school build-
ings in Canada. Erected 1913
Healthy situation in Residential Section of
Toronto, with Seven Acres of Playing Fields.
Complete Courses from KINDERGARTEN to MATRICULATION. Special
Departments for HOUSEHOLD SCIENCE—MUSIC—TEACHING—ART.
Pres., The Lord Bishop of Toronto. Prin., Miss Walsh, M.A. (Dublin)
Head Mistress, Junior School, Miss A.M.V. Bennett, (Higher
Certificate National Froebel Union), Late of Cheltenham
Ladies' College. For Calendar apply to the Bursar.



Branksome Hall

10 Elm Ave. Rosedale, Toronto
A Residential & Day School for Girls
Hon. Principal, Miss M. T. Scott.
Principal, Miss Edith M. Read, M.A.
New French House opened September
13th. Special Course in Dietetics, Pass
and Honour Matriculation, Art, Music,
Domestic Science. Large play-grounds,
Outdoor Games.
For Prospectus apply to the Principal.

PHONE MAIN 7404.

Why are You Holding
Back on Your Catalogue? GET
BUSY

We have one of the largest and best-
equipped plants in the business for the
prompt production of catalogue, commer-
cial and fine job printing in one or more
colors.

The Monetary Times Printing
Co., of Canada, Limited
Cor. CHURCH and COURT STS.
Toronto, Canada

MEMORIAL
WINDOWS
ENGLISH
ANTIQUE
STAINED-GLASS
LYON
GLASS Co.
141-3 CHURCH ST. TORONTO ONT.

SOME churches are having difficulty in keeping up with
their expenses—others use the

New-Duplex

NO PERFORATION

Envelope System and have a surplus. Now is the time
to introduce it in your Church.

Christmas Offering Envelopes 25 cents per 100.

THE CHURCH ENVELOPE COMPANY

109 JARVIS ST

MAIN 3346

TORONTO