

MUNICIPAL ENGINEERS, CONTRACTORS AND MATERIALS

WILLIS CHIPMAN

Hon. Grad. McGill University.
M. Can. Soc. C.E. M. Am. Soc. C.E.
Mem. Am. W.W. Ass'n.

**WATERWORKS, SEWERAGE WORKS, GAS
WORKS, ELECTRIC LIGHT AND
POWER PLANTS**

Reports, Surveys, Construction, Valuations

103 BAY STREET - TORONTO

R. E. SPEAKMAN, C.E.

A. M. Inst. C. E., 1873.

CONSULTING ENGINEER

Waterworks, Sewerage and Sewage Disposal.
Municipal Improvements.
Granolithic Pavements.
Electric Light Plants.
Drainage and Irrigation of Land.
Coal Handling Plant and Machinery.
Plans, Specifications and Estimates.
Construction and Valuations.

Canada Life Building - TORONTO

E. VON DER OSTEN & CO.,

Consulting Engineers

Industrial Plants. Waterworks.
Lighting and Power Plants
Sewerage and Sewage Disposal
Garbage Reduction Plants
Municipal Improvements

Roncesvalles Ave. & High Park Road,
TORONTO, ONT.

Cable: Ackcoll

J. J. COLLINS

B.A.S., C.E., M.E., E.E.

Consulting Engineer

Ottawa, Ont., Canada

RODERICK J. PARKE

A.M. Can. Soc. C.E. A.M. Amer. Inst. E.E.

CONSULTING ELECTRICAL ENGINEER.

Electrical Light and Power.
Steam Plants, Gas Power Plants, Water
Power Plants.
Estimates. Tests. Reports. Valuations.

52-53 James Building - TORONTO, CAN.

Long Distance Telephones-Office and Residence
Cable Address "Rodparke" (W. U. Code.)

John H. Jackson

CIVIL ENGINEER

**WATER POWER, ELECTRIC RAIL-
WAYS, STRUCTURAL STEEL.**

Niagara Falls, Canada

Associated with Charles H. Mitchell,
C. E., Hydraulic Engineer.

CHARLES BRANDEIS

A. M. Can. Soc. C. E., A. M. Amer. Inst. E. E.
Mem. Amer. Electro-Chemical Soc., Etc.

CONSULTING ENGINEER

Estimates, Plans and Supervision of Hydraulic
and Steam-Electric Light, Power and Railroad
Plants. Specifications, Reports, Switchboard
Designs, Complete Factory Installations, Elec-
tric Equipment of Mines and Electro-Chemical
Plants.

Long Distance Telephone Main 3255.

Cable Address: Brandeis-Montreal.

W. U. Code, Univ-Edition.

62-63 Guardian Building

MONTREAL

"Giant Brand" Portland Cement

Manufactured at BLUE LAKE

Gives universal Satisfaction. (Used exclusively on all work by the City of Brantford and other place)

THE ONTARIO PORTLAND CEMENT CO., LIMITED

Head Office: Brantford, Ont.

Long Distance Phone 104.

THE ONTARIO ASPHALT BLOCK CO., L'T'D.

MANUFACTURERS OF

ASPHALT BLOCK PAVING

Information and samples furnished municipalities on application.

Main Office: WINDSOR, ONT.

Works: WALKERVILLE, ONT.

THE CANADIAN SEWER PIPE CO.

MANUFACTURERS OF



FOR

Sewers, Culverts and Water Pipes

Inverts for Brick Sewers

WRITE FOR DISCOUNTS

ST. JOHNS, P.Q.

HAMILTON, ONT.

TORONTO, ONT.

ALSEN'S, 45 Broadway, NEW YORK**THE OFFICIAL PRACTICAL
TEST OF CONCRETE VAULT
LIGHT CONSTRUCTION**

UNDER THE PERSONAL DIRECTION
OF

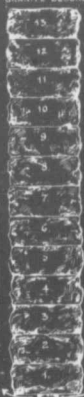
WM. BARCLAY PARSONS, C.E., M. Am. Soc. C.E.
CHIEF ENGINEER R. T. COMMISSION

AND

S. L. F. DEYO, C.E., M. Am. Soc. C.E.
CHIEF ENG. R. T. SUBWAY CONSTRUCTION CO.

ALSEN'S HAS BEEN SELECTED IN PREFERENCE
TO **ALL OTHER BRANDS**, FOR THE SUBWAY
RAPID TRANSIT STA-
TIONS OF THE ENTIRE
SYSTEM, REACHING
FROM THE BATTERY
TO THE BRONX.

GRANITE BLOCKS



MERELY SUSPENDED BETWEEN I-BEAMS
A SLAB OF

ALSEN CONCRETE

2 INCHES THICK
6 FEET WIDE } 30 DAYS OLD
12 1-2 FEET LONG

SUSTAINED 11,882 POUNDS OF
CONCENTRATED WEIGHT

ON AN IRON DISC 8 1-2 IN. IN DIAMETER

THOUGH HIGHEST IN PRICE, ALSEN'S IS BEING
USED IN THIS VERY IMPORTANT CONSTRUCTION,

NOT ONLY BECAUSE OF ITS
GREATER STRENGTH, BUT
CHIEFLY BECAUSE OF ITS
ABSOLUTE SAFETY
IN ACTUAL WORK.



MADE BY TUCKER & WINTON, INC., NEW YORK CITY.
PATENTS