

## Raise Your Standard

Does the membership in your Sunday School stand for something worth while? Have you any plan by which you recognize your scholars? Do you give them anything tangible to represent their place in the school? Such questions arise because of the commendable practice of our Norwich Sunday School in this regard. On a recent visit there, we obtained from the progressive and devoted superintendent, Brother T. L. Dunkin, a copy of each of three certificates used in the school. These are "Certificate of Membership," "Teachers' Certificate," and "Removal Certificate." We cannot reproduce them, but the following description may explain with sufficient clearness in each case. Each card is about three and a half by six inches in size.

### CERTIFICATE OF MEMBERSHIP.

The front has an impression of the church in gold. Over this, printed in

6. Do not enter the classroom during reading or prayer.

7. Late scholars should enter by the back way.

8. Render prompt and cheerful obedience to teachers and officers in charge at all times.

Let your conduct be courteous, bright and happy, but withal be reverent. It is the Lord's command, the Lord's House, the Lord's Day.

And finally, be loyal. Claim your membership. Do your part and help others to do theirs. You will find the result in 2 Tim. 2: 15.

### THE TEACHERS' CERTIFICATE.

The face of this is similar in general outline to the former one. The reverse side contains the following suggestions enclosed by a fancy border. They are so good that we commend them to all our schools.

to God, by keeping the salvation of the scholar constantly in view; and second, to one another and the school by a broad Christian spirit that includes all the family and makes all one.

Motto: "2 Tim. 2: 15.

### REMOVAL CERTIFICATE.

This is a neatly printed card "to certify that . . . . . is a member of . . . . . Norwich Sunday School, and being about to remove to . . . . . we warmly commend . . . . . to the loving sympathy and care of the Church and Sunday School in . . . . . home." The signature of both Superintendent and Secretary are duly affixed.

There is nothing particularly new in these certificates; but their universal use would result beneficially to all concerned. Such attention to details binds the whole school together not only in the local community, but throughout the whole church.

## Woodgreen

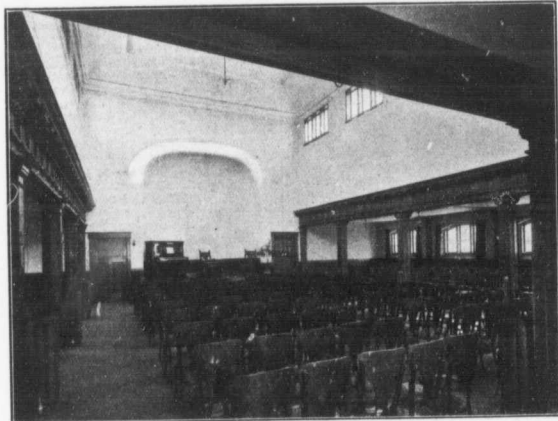
### The Modern Sunday School

The accompanying illustrations represent very clearly the general features of the subject of this article, Woodgreen Methodist Sunday School, Toronto, the construction of which has just been completed.

This splendid new building is a monument to the strength of the Christian forces at work in the busy commercial centre in which Woodgreen Church is located, and an institution to which Christians everywhere may point with justifiable and proper pride.

For the benefit of those who would wish to know more fully the details concerning this modern school building we have secured from the superintendent the following data, which we trust will be found of interest to all our readers, as the construction of such edifices for such a purpose, we believe, marks in a most emphatic manner the evolution of thought which has taken place within the church in respect to the Sunday School. In fact, it may well be stated that the latter has come to be regarded as the keystone by means of which those great factors in our Christian civilization, the home and the church in its largest sense, are cemented together and held by a bond of immeasurable strength. With this high conception of the office of the Sunday School, is it any wonder that our friends in Woodgreen Church saw fit, after having the matter drawn to their attention by the officers of the school, to demolish the old building which had done its duty well for many years and had been the scene of many a spiritual struggle and triumph and fraught with so many tender memories? But, as the old conveyance must finally be set aside to make room for a more modern vehicle, so the old rough-cast, weather-beaten structure, poorly ventilated, and totally inadequate to meet the exigencies of a growing attendance, has, this year, been superseded by a splendid solid brick building, 60 feet by 60 feet, the salient feature of which is the large auditorium with its 22 windows, giving one the impression that they have just entered an immense conservatory. It is hoped that this school may prove to be a conservatory wherein will develop within the hearts and minds of the scholars all those excellent virtues which make towards the best manhood and womanhood, the crowning point of our Christian civilization.

Ranged around the sides of the auditorium are twelve class rooms. These are partitioned off by doors operated by pulleys and concealed weights suspended in the basement by means of which the doors may be easily raised until they disappear in the wall above. By this arrangement, each of these twelve classes are furnished with an individual room.



INTERIOR WOODGREEN SCHOOL.

red, "Certificate of Membership. This certifies that . . . . . is a member of the Norwich Methodist Sunday School, and is entitled to all the rights and privileges of members. In testimony whereof the said school has caused this certificate to be signed by its superintendent and secretary, this . . . . . day of . . . . . A.D., 19. . . ." Spaces for the signatures complete the face of the card. The reverse side has the following printed in blue with red borders:

### Rules for the guidance of Scholars in Norwich Methodist Sunday School.

1. Be punctual. You usually get some direct benefit yourself as well as help somebody else.
2. Be regular. Spasmodic effort never takes the highest place.
3. Bring your Bible with a bookmark in it at the place where the lesson is to be found.
4. On arrival at the Church it is always best to proceed at once to one's class position. Do not look into the classroom, and if you are a few minutes early, go away again, take some one with you, and nine times out of ten return late, which you are pretty sure to do.
5. Have your library cards marked with at least ten numbers in advance of your needs.

### Rules for the Guidance of Teachers in the Norwich Methodist Sunday School.

1. Teachers should be very careful in regard to their attendance. Fifty-two times in a year are not too many. Regular attendance secures an advantage that can be gained in no other way, and irregular attendance destroys one's work as scarcely anything else will. In case of enforced absence, the teacher should secure a supply if possible.
2. Be on time. Punctuality helps the Superintendent, helps the Teachers, helps the scholars, and helps one's self. Be punctual.
3. New scholars should be introduced to the Superintendent and not accepted as a member of any class unless assigned thereto by him, nor should any scholar be allowed to leave one class and join another without his consent.
4. Rules of order should be carefully observed. No school will have proper order without orderly Teachers and orderly Officers. It is the hamonious working by all concerned toward an end that best accomplishes the object in view.
5. Attend the quarterly committee meetings when possible. This keeps one in touch with all the interests of the school and gives an opportunity to advise and consult in reference to the general work.
6. More than all else, be loyal. First