

WOOD PULP ~ ~ DEPARTMENT

SALE OF THE MISPEC PULP MILL.

The liquidators of the St. John Sulphite Pulp Company have disposed of the pulp mill at Mispec, N.B., to the City of St. John. It is said that no other tender was submitted, and it is singular that the amount of the tender has not been made public. It is reported that English interests sent a formal protest against the sale unless the property realized \$150,000, and the general opinion is that the price received is below that figure. The City Council have not yet definitely decided what disposition will be made of the mill, but it is likely that it will be offered for sale or lease in the near future.

THE OUTLOOK FOR PULP AND PAPER.

Mechanical wood is not in abundant supply. It is not plentiful, and those who own it are somewhat independent in their views. They favor the policy of waiting for a rise rather than that of making a quick sale. Late news from the Scandinavian market shows that there is practically no free ground wood there, and that manufacturers there are not at all sure that they can deliver all the goods already contracted for, not because the contracts are unusually large but because by reason of drought production has been and is greatly restricted, and there are no signs of a renewal of the water supply. A shortage in the Scandinavian supply

value of pulp, and they in turn support the prices of papers in which they are an important factor, such as book, news, manila, wrapping, tissue, &c. It is generally conceded that lower prices are entirely out of the question. If they remain on their present value, buyers will be getting all to which they are justly entitled, while with high wood, high labor, short supplies, and a largely increased late demand for paper, producers of the latter expect to see higher quotations in force.—Paper Trade Journal.

PULP NOTES.

The output of the Riordan sulphite pulp mill at Hawkesbury, Ont., is now maintained at very nearly the full present capacity of 100 tons per day.

It is stated that the pulp mill of the Maritime Sulphite Fibre Pulp Company at Chatham, N. B., will be put in operation by the Bank of Montreal, who now control the property.

The Bostwick timber limits in New Brunswick, which were recently purchased by W. H. Parsons, will provide a supply of pulp wood for the Pejepecot Paper Company, in which the purchaser is interested.

It is reported that the pulp mills of Sault St. Marie, Ont., will be operated to their full capacity next year, as it has been decided to take out 50,000 cords of pulp wood during the approaching winter. The mill will be operated by the reorganized Lake Superior Consolidated Company.

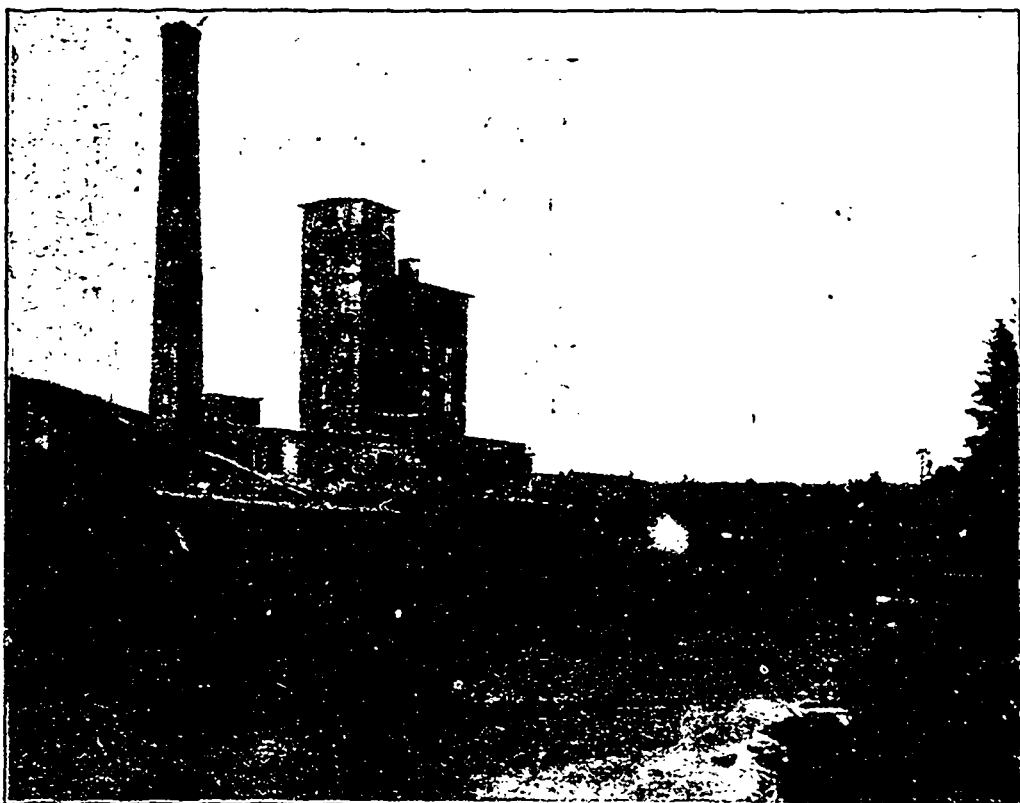
At a meeting of the Scandinavian Chemical Wood Pulp Association, held in Christiania lately, it was stated that this year's and most of next year's production was already sold. It was not deemed advisable to fix higher prices for next year, and the following quotations, c.i.f. London, were submitted: Ordinary strong pulp, £8 5s.; best grades of easy bleaching pulps, £9.

The United States manufacturers of soda pulp have fixed the price for 1905 at 2.15 cents for both contract and non-contract business. This year's figures are 2 1/4 cents for contract and 2 1/4 cents for separate orders. The advance made, therefore, is but 50 cents per ton, which is less than is believed to be warranted by conditions. Reports collected disclose the fact that stocks at the mills are very light.

According to information received from the different wood pulp districts, the prospect of a water famine in Sweden is not so pronounced as in Norway. Although the summer there has been very dry, the snow-melting during the Springtime proceeded so quickly that the lakes and reservoirs were well filled in the early part of the summer. This month, however, will decide how the mills are going to be worked during the winter.

The Lockwood Trade Journal Company, 150 Nassau street, New York, have issued the 30th annual edition of Lockwood's Directory of the paper, stationery and allied trades. This edition is a record breaker in every respect, being larger and more comprehensive than any previous number. It includes a complete list of all the paper, pulp and chemical fibre mills in the United States, Canada, and Mexico, as well as a list of paper dealers and importers, stationers, manufacturers of blank books, envelopes, paper bags, boxes, etc. All departments have been revised and brought strictly up-to-date, and the vast amount of information it contains makes the book very valuable and useful. The retail price, express prepaid, is \$3.

The Manitou Lumber Company are enlarging and improving the planing mill which they recently purchased at North Bay, Ont.



THE MISPEC PULP MILL, PURCHASED BY THE CITY OF ST. JOHN, N. B.

The mill property consists of 300 acres, located on the Mispec river about six miles from St. John. The buildings are brick and are situated on the bank of the Mispec river. The mill is capable of producing 200 tons of pulp per week, but the building is so arranged as to permit of doubling the output.

The mill dam is substantial and is fifty feet high. There is an ample supply of power for driving the machinery, this being furnished by four water wheels capable of developing 600 horse power. In addition there is a 250 horse power compound steam engine as an auxiliary, and in the boiler room there are steam boilers of 500 horse power capacity for use in the cooking and drying of the pulp.

The promoter of the mill was Mr. M. F. Mooney, who floated the enterprise in Scotland and was subsequently appointed manager.

will naturally increase the demands on other ground wood producing countries, and as we are buyers of ground wood we, of course, are more than likely to feel the effects of these conditions.

Sulphite does not show any weakening tendency and standard and well known makes are bringing full prices. The soda fibre manufacturers advanced prices 2 1/2 points, and they agree that conditions would warrant a considerably larger advance. Supplies are low, and it is stated that the present stock would be sufficient for only three to five days' demand. That a greater advance is not made is only due to that forbearance for which soda fibre manufacturers are so noted.

The price of wood is steadily advancing and the price of labor is constantly moving in the same direction. These factors support the

C. H. VOGEL

A. M. C. E. Soc. C. E.
OTTAWA, CAN. ENGINEER
Surveys, Plans, Specifications and Supervision
WATER POWER
Paper, Pulp and Sulphite Fibre Mills