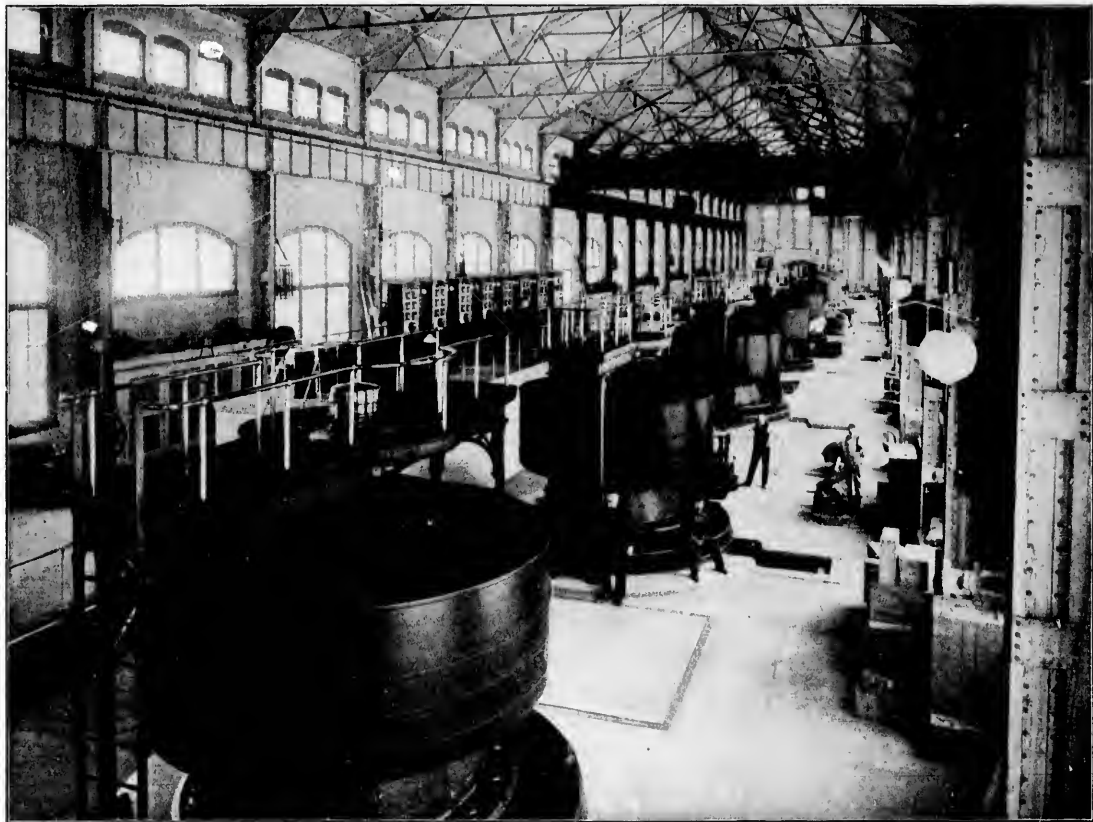


CANADIAN FALL IN WINTER.—And now across the Ice Bridge the tourist takes his way to the Canadian side. Standing in the shelter of the overhanging precipice decorated with icicles and organ-pipe in clearest crystal, he looks across at the majestic plunge of the Canadian Fall as it dashes over the ice bordered brink into the unknown depths beneath. It is a repetition of the story in black and white, the culmination of artistic beauty; the work of a world builder.



INTERIOR OF POWERHOUSE.—The maximum output of the three Power Houses up-to-date is 90,000 h. p., of which 38,000 h. p. is delivered in Buffalo, the Tonawandas, Lockport, Olcott and Fort Erie, and 52,000 is used locally. The total output of the three plants for 1905 was 432,075,554 kilowatt-hours—approximately 10 per cent of the aggregate output of all the central electric light and power stations in the United States. To produce this output by steam, it would require the daily consumption of 1,900 tons of coal.