

PORTA NUOVA, VERONA.

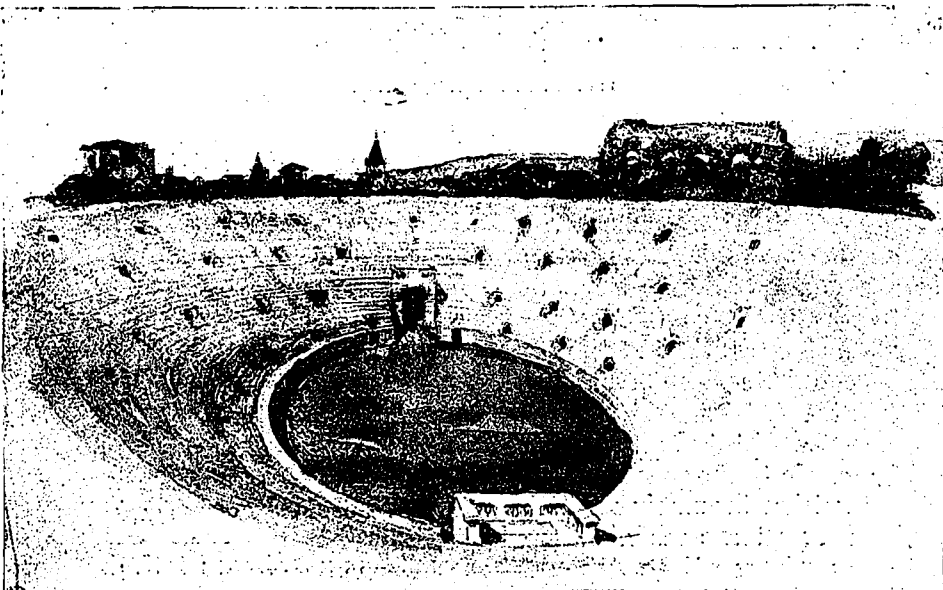
Roman arena, in very fine state of preservation and still in use for games, etc., and the beautiful Loggia facing the town Piazza. From Verona one may see the Alps that figured so prominently in the Great War.

I then proceeded to Venice, and if time allows, would advise a stop at Vicenza, as there are many objects there of interest to the student.

Arriving at Venice is a very interesting moment of the journey, in that one travels at first over a viaduct well out to sea before reaching the city. On all sides, as the train speeds along, nothing can be seen but water with islands in the distance. Venice proper was built for pro-

tection from the northern tribes, upon islands well out at sea, and developed into, at the height of her prosperity, Mistress of the Sea. Her merchant palaces are one of the wonders of the world to-day.

Upon arriving in the city at night, I went out to the front of the station and was quite surprised to find nothing but water before me, and I realized that henceforth I must travel in a boat unless I walked, for there are no street vehicles of any kind in Venice except an odd hand cart, the streets being so narrow and continually crossing canals by countless, fine little bridges. It is without doubt one of the most

ARENA
AT VERONA.SKETCHES BY
CHAS. DOLPHIN,
ARCHITECT.

ARENA AT VERONA.