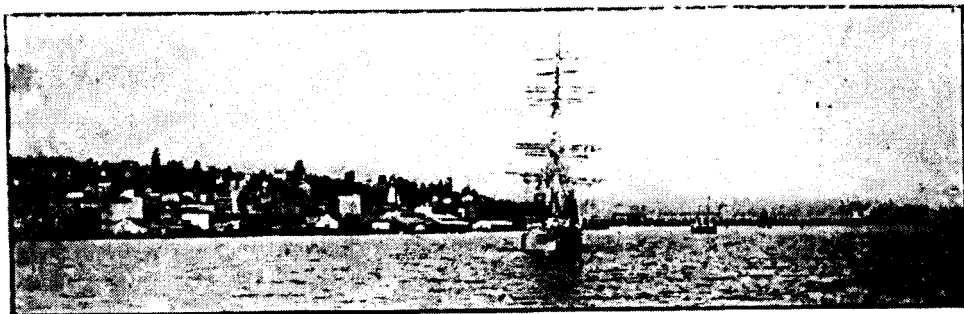


NEW WESTMINSTER



NEW WESTMINSTER is the centre of the agriculture, fishing, and lumbering industries of the Fraser Valley, British Columbia.

NEW WESTMINSTER is the meeting point of two great transcontinental railways—the Canadian Pacific and the Great Northern, while the V. V. & E. railway now under construction will shortly become a feeder to the city's trade and industry. A network of inter-urban electric railways connecting with Vancouver, Eburne, Steveston, Cloverdale and Chilliwack are so laid out as to converge at New Westminster, adding considerably to the commercial prosperity of the city.

NEW WESTMINSTER is the only fresh water port on the British Pacific. Over 1,200 deep-sea and coasting vessels visited the port last year, and the Dominion Government has just decided upon plans for a deep water channel to enable the largest ocean going steamers to navigate the river at all stages of the tide. The G. N. railway, Gulf-Car-Ferry and the C. P. N. Co.'s steamers and passenger vessels, and tugs of other companies make the "Royal City" their home port.

WHITE, SHILES & CO.

Fire Insurance

Real Estate and Financial Agents

The B. C. MILLS, TIMBER AND TRADING CO.

(Royal City Planing Mills Branch)

Manufacturers of Doors, Windows, Fish and Fruit Boxes and all Descriptions of Interior Finishings.

Westminster Iron Works

JOHN REID, Proprietor

Manufacturers of Wrought Iron Gates, Fences,
Ornamental Iron Work, Fire Escapes,
and Iron Stairs.

OFFICE AND WORKS, 10TH STREET.

Dominion Trust Co., Ltd.

Real Estate, Insurance and
Financial Brokers.

FARM AND FRUIT LANDS A SPECIALTY.