

OUR CHESS COLUMN.

Solutions to Problems sent in by Correspondent will be duly acknowledged.

TO CORRESPONDENTS.

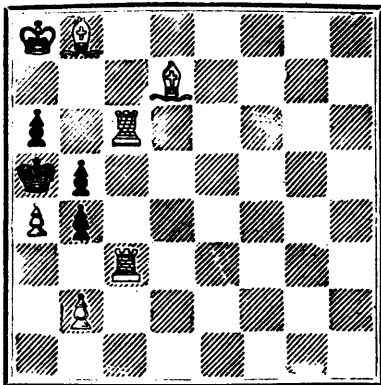
J. W. S., Montreal.—Several communications received with thanks.  
Student, Montreal.—Correct solution of Problem No. 196 received.  
J. J. B., New Rochelle, N.Y.—Many thanks. We will gladly avail ourselves of your kind offer.  
W. A., Montreal.—Problems received. Many thanks.  
E. H., Montreal.—Correct solution of Problems for Young Players, No. 195 received.

PROFESSOR ALLEN'S CHESS LIBRARY.

It is well known to every lover of Chess that it has a history of its own, and also, that a large number of works have been written in connection with it, constituting altogether a very important amount of literary labour.  
A collection of these works was made by the late Prof. Allen, of Philadelphia, which ultimately became a magnificent Chess library.  
This library is at the present time offered for sale, and we have been requested to notice the circumstance in the CANADIAN ILLUSTRATED NEWS.  
We have seen the catalogue of the works, and most willingly insert the following notice from the *Philadelphia Librarian* which in a few words describes the nature and extent of this splendid collection.  
"A catalogue of the Chess Collection of the late Prof. George Allen, of the University, has been prepared by his executors, Professors F. A. Jackson and G. B. Keen. The library is the finest on the subject in America, and ranks with three or four best ones in Europe. It comprises about a thousand printed volumes in more than a dozen languages, besides two hundred and fifty autograph letters, and fifty engravings and photographs. All departments of chess lore are represented in it; many of the works are of the greatest rarity, some of them not included in any other private collection, some altogether unique. Three books as valuable as any, are the copy of Domiano, in the first edition of 1512, Ruy Lopez, of 1561, and the Italian Carrera. There are copies of Tarsia, Gianutio, Selenus, Salvioli, Lalli, Ponziani, Cozio, and all ancient and modern classics of the game. There are forty-six copies of Philidor, only two or three of them duplicates, as well as nineteen reproductions of his treatise under other names. The collection of works relating to Chess Problems, the Knight's Leap, and the Automaton Chess Player, are remarkably copious, the Chess Journals extremely numerous, and the Belles-Lettres of the subject beyond all hope of rivalry. The bindings of the books have been described with great precision by Colonel John P. Nicholson, of the well-known firm of Pawson & Nicholson, Philadelphia, and correspond in solidity and beauty with the volumes which they protect. The catalogue itself is neatly printed, and gives the titles of the works with more than the usual fulness, noting from recognized authorities points of bibliographical interest."  
A committee of the Chess Club of the University of Pennsylvania are making an effort to raise \$3,000, for the purpose of buying and presenting to the library of the University, this magnificent and unique collection of works on chess, made by the late Prof. George Allen, LL.D., of that institution—a library of chess books and manuscripts, admitted to be the finest in America, and which takes rank with three or four regarded as the best in Europe.—*Globe-Democrat*, St. Louis, U.S.

The annual club tournament of the Manhattan Chess Club, New York, began last week, and is now in progress. We understand that Mr. A. P. Barnes, the well known Chess annotator of New York, is taking part in the contest, and is one of three players in class A, who give the odds of pawn and move to the players in the first class.

PROBLEM No. 199.  
By W. ATKINSON, Montreal.  
BLACK.



WHITE  
White to play and mate in two moves.

GAME 30TH.  
CANADIAN CHESS CORRESPONDENCE  
TOURNAMENT.

(From *Ayr Argus and Express*).  
Played between Mr. Geo. P. Black, of Halifax, N.S., and Mr. J. W. Shaw, of Montreal.  
(Philidor's Knight Game.)

WHITE.—(Mr. Black.)	BLACK.—(Mr. Shaw.)
1. P to K4	1. P to K4
2. Kt to KB3	2. P to Q3
3. P to Q4	3. P takes P
4. Kt takes P	4. Kt to KB3
5. Kt to QB3	5. B to K2
6. B to K3	6. Castles
7. B to K2	7. P to QKt3
8. Castles	8. B to Kt2
9. B to Q3	9. Q Kt to Q2
10. Kt to Q5	10. Kt to K4
11. P to QB4	11. P to B3
12. Kt takes Kt	12. B takes Kt
13. Q R to Kt sq	13. P to Q4
14. K P takes P	14. P takes P
15. P to QKt3	15. Kt takes B
16. Q takes Kt	16. Q R to B sq
17. Q R to B sq	17. P takes P
18. P takes P	18. B to K4
19. P to KB4	19. B takes Kt
20. B takes B	20. B to R3
21. K R to B3	21. P to B3
22. R to R3	22. P to R3
23. Q to K3	23. R to K sq
24. Q to KB2	24. R to K5
25. K R to Q3	25. R takes Q B P
26. Q R to Q sq	26. Q to B2
27. B to K3	27. R to B7
28. R (Q3) to Q2	28. R (K5) to Q B5
29. R takes R	29. R takes R
30. Q to K sq	30. R takes R P
31. B to B2	31. Q to B7
32. R to Q2 (a)	32. Q takes R
33. Q to K8 (ch)	33. K to R2
34. Q to K4 (ch)	34. P to B4
35. Q takes P (ch)	35. K to Kt sq
36. Q to K6 (ch)	36. K to B sq
37. Q to B5 (ch)	37. K to K2

And White resigned.

NOTES.

(a) A very good endeavour to obtain a "draw" by perpetual check, but Black cleverly avoided perpetual motion, and wins by sacrificing a pawn at the proper time.

GAME 31TH.

CHESS IN LONDON.

An instructive game played some time ago at Simpson's Divan (Eng.).

(Q R P's Opening.)

WHITE.—(Mr. Janssens.)	BLACK.—(Mr. Minchin)
1. P to K4	1. P to K4
2. Kt to KB3	2. Kt to QB3
3. P to QB3	3. Kt to KB3 (a)
4. P to Q4	4. Kt takes K P
5. P to Q5	5. B to QB4
6. P takes Kt	6. B takes B P (ch) (b)
7. K to K2	7. Kt P takes P
8. Q to QR4 (c)	8. P to KB4
9. Q Kt to Q2	9. Castles
10. Kt takes Kt	10. P takes Kt
11. Q takes P at K5	11. P to Q4
12. Q takes K P (d)	12. R to K sq
13. Q takes R (ch)	13. Q takes Q (ch)
14. K takes B (e)	14. B to KB4
15. B to K3	15. P to QR4
16. R to K sq	16. Q to B sq
17. P to QR3	17. P to QR5
18. R to Q sq	18. B to K5
19. B to K2	19. P to QB4
20. K R to KB sq	20. P to QB5
21. Kt to Kt sq	21. Q to K sq
22. B to Q4	22. R to R3
23. Kt to Kt5	23. B takes Kt P (f)
24. R to B2	24. R to Kt3
25. R takes B	25. Q to K2
26. P to KR4	26. P to QB4
27. B to B2	27. R takes Kt (g)
28. P takes R	28. Q takes B
29. R to KB sq (h)	29. Q to K2
30. R to K sq	30. Q to Q3
31. B to Kt3	31. Q to Q2
32. K to R2	32. Q to Kt5
33. R to K8 (ch)	33. K to B2
34. R to K7 (ch)	34. K to B sq
35. B to Q6	35. Q to KR4 (ch)
36. K to Kt sq	36. K to Kt sq
37. B takes P	

And after a few more moves Black resigned.

NOTES.

(a) P to Q4 is safer if not stronger. It ensures the second player at least an equal game, and moreover limits the aggressive variations at the command of White in this opening.  
(b) If Kt takes this P, White replies with Q to Q5.  
(c) More forcible than the usual move Q Kt to Q2.  
(d) Compulsory, as otherwise the Q must take up some useless position, and the other pieces remain for some time locked up at home.  
(e) White has now virtually a won game, but it requires careful management.  
(f) A cunning bait which Black snaps at, devours, but cannot digest.  
(g) Of course he dare not take the B on account of R to K sq.  
(h) Better than the obvious R to K sq. The whole game, indeed, is a fine specimen of Mr. Janssens's sound judgment and scientific knowledge.

SOLUTIONS.

Solution of Problem No. 197.

WHITE.	BLACK.
1. B to K7	1. K moves
2. Kt to B5 (dis. ch.)	2. K moves
3. R to K8 (ch)	3. K moves
4. Kt or R mates	

Solution of Problem for Young Players No. 195.

WHITE.	BLACK.
1. R takes Q	1. Any
2. Mates acc.	

PROBLEMS FOR YOUNG PLAYERS, No. 196.

WHITE.	BLACK.
K at Q8	K at QR sq
B at Q7	Pawn at Q Kt3
Kt at QR7	
Pawns at QR6 and Q Kt5	

White to play and mate in three moves.

ROBERT MILLER,

Publisher, Book-Binder, Manufacturing and  
WHOLESALE STATIONER.

IMPORTER OF

Wall Papers, Window Shades and  
SCHOOL BOOKS,  
397, NOTRE-DAME STREET, MONTREAL.  
14-6.

\$10 to \$1000 invested in Wall St. Stocks makes fortunes every month. Book sent free explaining everything.  
Address BAXTER & CO., Bankers, 17 Wall St., N. Y.

THE  
Canadian Spectator,

A high-class Weekly Journal,

EDITED BY THE

Reverend A. J. BRAY.

SUBSCRIPTION: \$2.00 PER ANNUM.

OFFICES: 162 St. James Street, Montreal, and 4 Toronto Street, Toronto.

THE MILTON LEAGUE.

"Give me the liberty to know, to think, to believe, and to utter freely, according to conscience, above all liberties.—Milton."

PUBLICATIONS:

BRAY, REV. ALFRED J. The Churches of Christendom, cloth.....	\$1.00
BROWN, REV. J. BALDWIN. The Doctrine of Annihilation in the Light of the Gospel of Love.....	50
DALE, REV. R. W. Protestantism: Its Ultimate Principle.....	60
DAWSON, GEO. M. A. Prayers, and a Discourse on Prayer.....	50
MCLEOD, NORMAN, D.D. Scotch Pebbles.....	15
TIPPLE, REV. S. A. Echoes of Spoken Words.....	50

"Here is a new wave of literature, and of the deep and wide sea of religious thought, but sparkling and bright and gratefully refreshing."—*Literary World*.

New Work of Vital Interest.

Post Free 12 Cents or 6d. stg.

FROM

J. WILLIAMS, P. M.

22, MARISCHAL STREET, ABERDEEN, SCOTLAND,  
NORTH BRITAIN.

A LONG AND HEALTHY LIFE.

CONTENTS:

1.—Medical Advice to the Invalid.  
2.—Approved Prescriptions for Various Ailments, including Exhaustion, Loss of Nerve Power and Debility.  
3.—Phosphorus as a Remedy for Melancholia, Loss of Nerve Power, Depression, and Nervousness.  
4.—The Cocoa Leaf a Restorer of Health and Strength.  
5.—Hints on Self-Treatment and Cure. 17-1-52-309

SUMMER COMPLAINT, WEAK BACK, RHEUMATISM and SEXUAL EXHAUSTION, immediately relieved and permanently cured by using IMPROVED GALVANO-ELECTRIC BELTS. Circular free.  
A. NORMAN,  
16-25-46 4 Queen Street, Toronto.

JOHN MCARTHUR & SON

OIL, LEAD, PAINT,

COLOR & VARNISH MERCHANTS

IMPORTERS OF

English and Belgian Window Glass, Rolled, Rough and Polished Plate Glass, Colored, Plain and Stained Enamelled Sheet Glass.

PAINTERS' & ARTISTS' MATERIALS, BRUSHES, CHEMICALS, DYE, STUFFS, NAVAL STORES, &c.

310, 312, 314 & 316 ST. PAUL ST.,

AND  
253, 255 & 257 COMMISSIONERS ST.  
MONTREAL.

J. K. MACDONALD,

BLACKSMITH, BELL HANGER, LOCK SMITH &c., 24 Latour Street, Montreal.

REPAIRS PROMPTLY ATTENDED TO.

17-20-52-354

British American

BANK NOTE COMPANY,

MONTREAL.

Incorporated by Letters Patent.

Capital \$100,000.

General Engravers & Printers

Bank Notes, Bonds,

Postage, Bill & Law Stamps,

Revenue Stamps,

Bills of Exchange,

DRAFTS, DEPOSIT RECEIPTS,

Promissory Notes, &c., &c.,

Executed in the Best Style of Steel Plate Engraving.

Portraits a Specialty.

G. B. BURLAND,

President & Manager.

60 Chromo and Perfumed Cards (no 3 alike). Name in Gold and Jet, 10 cents.  
CLINTS BROS., Chiltonville, Ct.

LONDON MANUFACTURING CO.'S

ESSENCES OF MEATS,

For Invalids, Travellers, and Persons of Delicate Health.

ESSENCE OF BEEF,

ESSENCE OF MUTTON,

ESSENCE OF CHICKEN.

These Essences consist solely of the Juices of the Finest Meats extracted by gentle heat without the addition of water or any substance, and are ready for use direct from the can, without further preparation, and will be retained by the stomach in the most severe cases of illness.

An excellent stimulant in cases of Diphtheria, Hemorrhage, and all cases of depressed system, and low vital power; almost a specific in cases of sea sickness and dyspepsia, and the ailments of infants in summer have been cured by this excellent Essence.

Wholesale by LYMAN, CLARE & CO., and H. SUGDEN EVANS, and by all Druggists and Grocers.

25 Chromo Cards, Cupids, Mottoes, Flowers, &c. No. 2 alike, with name, 10c. Nassau Card Co., Nassau, N. Y.

The Ottawa River Navigation Company.

FALL ARRANGEMENT—REDUCED FARES.

On and after MONDAY, 7th OCTOBER, the Day Steamers will be withdrawn and replaced by Night Steamers between

MONTREAL and OTTAWA.

Passengers leave Bonaventure Depot daily at 5 p.m. Trains for Lachine to connect with Steamer.

First-class Fare (Montreal to Ottawa).....	\$2.50
Second-class do. do.....	1.25
Return (First-class do. do.....)	4.00

Freight at Low Rates. Freight Office—87 Common street. Tickets at Company's Office, 13 Bonaventure Street, Montreal, or at Grand Trunk Railway Office.

R. W. SHEPHERD,  
President.

17-17-52-350

MANOEL DUTRA SILVA,

New House of Consignments of all kinds,

BAHIA, BRAZIL,

Receives Vessels and Steamers of all Nations.

5 per cent Commission.

All Letters to be Prepaid as above.

JUST PUBLISHED

CHISHOLM'S ALL-ROUND ROUTE AND PANORAMIC

GUIDE OF THE ST. LAWRENCE,

With corrections to date. It contains full descriptions of the points of interest on the "All Round Route," including Hudson River, Trenton and Niagara Falls, Toronto, Ottawa, Montreal, Quebec, Saguenay River, White Mountains, Portland, Boston, New York. It is profusely illustrated, and is furnished with maps of the Route, and a fine panoramic view of the St. Lawrence River. For sale by booksellers and news agents. Sent post-paid to any address on receipt of the price, 50 cts.

C. R. CHISHOLM & BROS.,

17-26-52-373

179 Bonaventure street, Montreal.



THOMAS CREAN  
MILITARY TAILOR,

Master Tailor to the Queen's Own Rifles. Late Master Tailor in H. M. 16th Regiment. Uniforms and accoutrements strictly in accordance with the "Dress Regulations for the Army," and of the best workmanship and quality. The New Regulation Helmet in stock. Price lists sent on application. 435 YONGE STREET, Toronto.

NOTICE TO THE PUBLIC.

CANADIAN MECHANICS' MAGAZINE

AND  
PATENT OFFICE RECORD.

This VALUABLE MONTHLY MAGAZINE has been much improved during the past year, and now embodies within its pages the most Recent and Useful information published connected with Science and the different branches of Mechanical Trades, selected with particular care, for the information and instruction of Mechanics in Canada. A portion of its columns is devoted to instructive reading, suitable for the younger members of a family, of either sex, under the title of the

ILLUSTRATED FAMILY FRIEND,

SUCH AS

FLORAL CULTURE, NATURAL HISTORY, POPULAR GAMES AND AMUSEMENTS, LADIES' FANCY AND NEEDLE WORK, AND SHORT PLEASING STORIES.

ALSO

SELECTED NEW MUSIC,

DOMESTIC RECEIPTS, &c.

The Canadian Mechanics' Magazine,

with the addition of the

Illustrated Family Friend

AND

PATENT OFFICE RECORD,

Contains 16 full pages of Superior Illustrations and about 125 diagrams of all the Patents issued each month in Canada; it is a work that merits the support of every Mechanic in the Dominion, whose motto should always be

"SUPPORT HOME INDUSTRY."

Price, only \$2.00 per annum.

BURLAND-DESBARATS LITH. CO.,

PROPRIETORS AND PUBLISHERS,

5 and 7 BLEURY STREET, MONTREAL.

F. N. BOXER, Architect,  
Editor.

CHEAPEST AND BEST.



DAILY WITNESS

MONTREAL WITNESS

WEEKLY WITNESS

CANADIAN MESSENGER

NEW DOMINION

MONTREAL

JOHN DOUGALL & SON,

218 and 220, St. James Street, Montreal.

Electrotyping and Job Printing, Chromo and