

WESTINGHOUSE

Alternating and Direct Current

MOTORS

Reliable and Efficient



Westinghouse Induction Motor Driving 1,200 lbs. Capacity Single Rail Crane.

Canadian Westinghouse Co., Limited

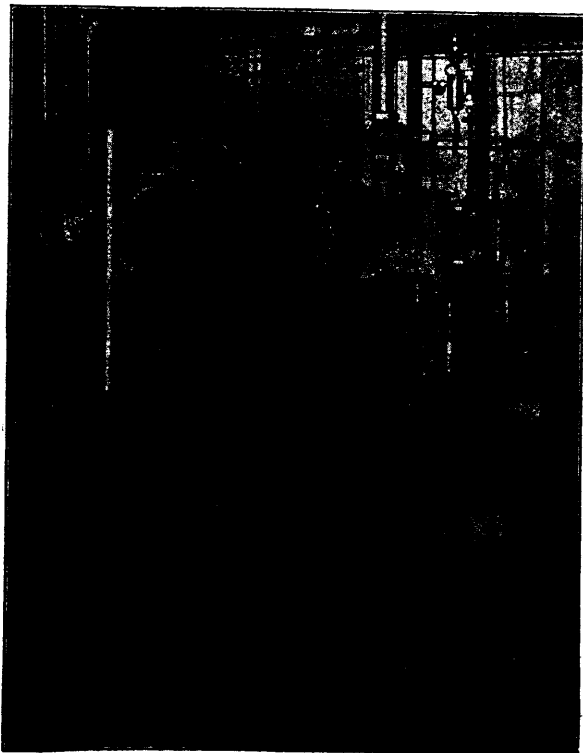
General Office and Works, HAMILTON, ONTARIO.

Lawlor Bldg., King and Yonge Sts.,
TORONTO.
152 Hasting Street,
VANCOUVER.

For particulars address nearest office:
HAMILTON.
922-923 Union Bank Bldg.,
WINNIPEG.

Sovereign Bank of Canada Bldg.,
MONTREAL.
184 Granville Street,
HALIFAX.

ALLIS - CHALMERS - BULLOCK LIMITED



IDEAL SMALL LIGHTING PLANT

TWO OF OUR 12 K.W. GENERATORS
AND AUXILIARY APPARATUS FORMING
THE LIGHTING PLANT AT WM.
DOW & CO'S BREWERY, MONTREAL.

Head Office and Works
MONTREAL

District Offices

TORONTO	-	MCKINNON BUILDING.
WINNIPEG	-	CANADA LIFE BUILDING.
NELSON	-	JOSEPHINE ST.
MONTREAL,	-	SOVEREIGN BANK BUILDING.
VANCOUVER,	-	416 SEYMOUR ST.
NEW GLASGOW,	-	N.S. TELEPHONE BUILDING.