

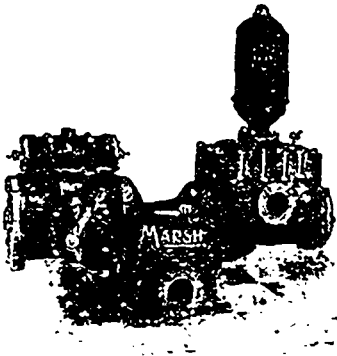
## IDEAL ENGINES

Perfection in High Speed Engine Design,  
Noiseless Running, Perfect Lubrication,  
Accessibility, Economy.

The **GOLDIE & McCULLOCH Co., Limited**  
Galt - Ontario - Canada

WE MAKE Wheelock Engines, Corliss Engines, Ideal Engines, Boilers,  
Pumps, Flour Mill Machinery, Cat Meal Mill Machinery, Cat  
Meal Steam Pan Kilns, Wood Working Machinery, Iron Pulleys,  
Wood Rim Split Pulleys, Shafting, Hangers, Gearing, Friction  
Clutch Pulleys, Friction Clutch Couplings, etc., Safes, Vaults  
and Vault Doors.

**SIMPLEX NOT DUPLEX**  
"The Simple is to be Great."



## MARSH AND AMERICAN STEAM PUMPS

"AMERICAN" COMPOUND PUMPS  
"AMERICAN" POWER PUMPS

Each Type at the Head of its Class.

**AMERICAN STEAM PUMP CO., - Battle Creek, Michigan, U.S.A.**

Write for No. 12 THE A. R. WILLIAMS MACHINERY CO., LIMITED, TORONTO.  
Catalogue. WILLIAMS & WILSON, - MONTREAL.

# MORISON Suspension Furnaces

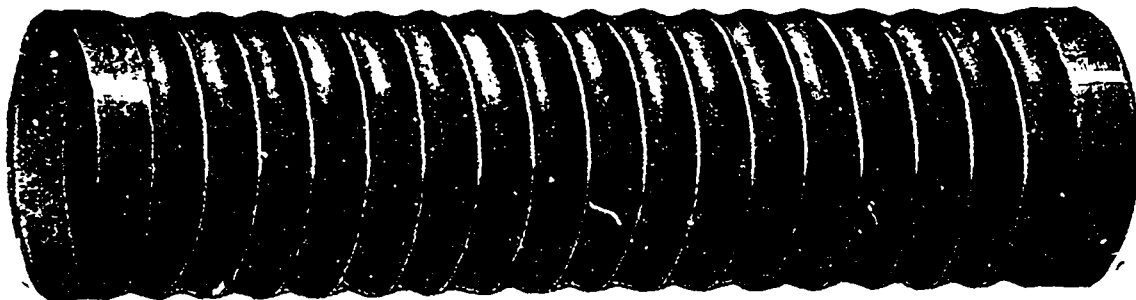


For Land and Marine Boilers

With Plain Ends or Flanged to any required shape.

Uniform Thickness, Easily Cleaned, Unexcelled for  
Strength, Unsurpassed for Steaming Capacity.

The universally satisfactory record of "THE MORISON" proclaims it the best furnace made.



MANUFACTURED BY

**THE CONTINENTAL IRON WORKS,** WEST AND CALVER STS., **New York**  
BOROUGH OF BROOKLYN,  
Near 10th and 23rd Street Ferries.  
Sole Canadian Agent—MR. GEORGE HOLLAND, M. C. Soc. C. E., P. O. Box 529, MONTREAL

When writing to Advertisers kindly mention THE CANADIAN MANUFACTURER.