

THE FAMILY FRIEND.

This part of the MAGAZINE, for the future, will be devoted to instructive domestic reading for the *Home Circle*, such as SHORT PLEASING STORIES, DRAWING, MUSIC, BOTANY, NATURAL HISTORY, POPULAR GAMES, and amusements for the boys and girls; NEEDLE WORK, AMATEUR MECHANICAL PURSUITS, and all the elements of a *practical domestic education*, also GARDENING and ARCHITECTURAL NOTES.

BOTANICAL GLOSSARY.



Legume.



Orbicular Leaf of Tropaeolum.



Oblanceolate Leaf



Peltate, or shield-shaped leaf.



Perianth.



Revolute Segments of Perianth.



A Leaf with lobes.



Oval Leaf.



Ovate Leaf.



Pepo. Cucumbers.



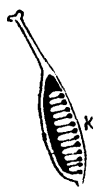
Pericarps: Hazelnut, Pea & Cherry.



A Ringent Corolla. Salvia.



A Loment.



Pistil, with Ovary laid open, showing the ovules.



Ovate Leaf.



Pistil. - Ovary J; Style, I; Stigma, H



Nemophila, showing its five petals.



Rhizome or Rootstock.



Beet Leaf, showing mid-rib.



Leaf of Begonia Rex, showing the netted veins.



A Panicle.



Anther, discharging pollen.



Pelargonium Leaf. O, Petiole.



Rotate Flower. Potato Blossom.



Nerved Leaves.



D, Node or Joint.



Thistle Seed, with crown of pappus.



Raceme of Dicentra.



Pinnate Leaf of Ceanothus.



Sagittate Leaf.



Opposite Leaves of Nymphaea.



Obcordate Leaflets Oxalis Bowei.



Wallflower. Peduncle M, and pedicel N



Gaillardia. Ray flowers around the margin.



Reflexed Segments of Perianth.



Leaf with Sinuate Margin.