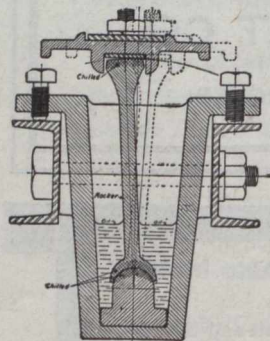


“Minerals fairly walk out— on a Wilfley table”

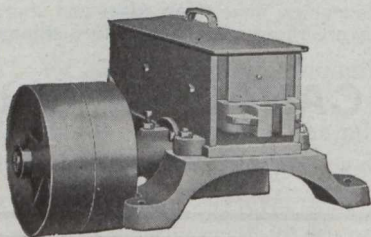
said one enthusiastic user. Of course “Wilfley’s” always have been good tables—we couldn’t have sold 20,000 if they had not consistently maintained definite superiority—but his remark was occasioned by the performance of our latest model equipped with the

New Wilfley Head Motion

No. 1623 Riffing and Improved Rocker Bearings



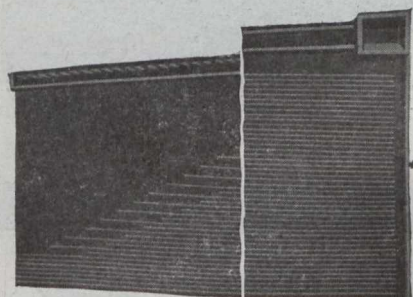
Improved Rocker Bearing,
with Straight Line Motion



Wilfley Improved Self-Oiling
Head Motion

Another reason for Wilfley success lies in its simple and substantial construction. It is the simplest table made—and the strongest.

*Our engineers give every problem
individual attention*



No. 1623 Riffing for High Capacity and
Clean Separation of Complex Ore

Wilfley Tables are manufactured in Canada by The Wabi Iron Works, New Liskeard, Ont.

THE MINE AND SMELTER SUPPLY COMPANY

A Service Station Within Reach of You

Denver

Salt Lake City

El Paso

New York Office: 42 Broadway