

entertainment

# Have you got some fadoodle?

By Paul Kellogg

A word of advice from old English folk songs was relayed to 50 or so patrons of the Orange Snail on Monday. A "lighthearted bluegrass" trio called *Muskeg Madness* sang a song advising young women not to marry older men because they've "got no fadoodle da doodle."

The young wife in question complained in song that "it's when we went up to bed, he lay as if dead." Her answer was finding a younger man to be her clandestine

lover, someone, apparently with a little more fadoodle.

The benefit performance of *Madness* called "Songs of Love and Sex" didn't raise thousands of dollars for its beneficiary Harbinger. But it's romantic and bawdy folk songs did raise the spirits of the audience.

The occasion was part of Harbinger's *Body Awareness Week*.

"We do mainly traditional Canadian songs," said lead singer Janet McNaughton, "but since we don't know too many bawdy

Canadian songs, we'll sing mainly British folk songs." Anne Lederman (vocals, mandolin and fiddle) and Bill Russell (vocals and guitar) rounded out the trio.

*Madness* projects an easy and relaxed atmosphere. The trio chatted informally between numbers, and during songs, when the odd mistake was made, a line forgotten, or a bar missed, it didn't cause tension or embarrassment. *Madness* ad libbed for a while until it got back on track.

Highlight of the first half of the performance was McNaughton's unaccompanied solo performance of an old Irish love song. "This song doesn't have much to do with sex," she said, "but it is a love song, and one generally leads to the other."

Her voice was competing with *Star Trek* playing in the back room, banging garbage cans, and the sales of beer and beer nuts. But when she lifted her clear soprano voice into the room, we forgot about the bar noises. The song caught and held the attention of the entire audience.

The songs went from the glories of waltzing with log-drivers to a bilingual love song from New Brunswick. The performance was rough and unpolished, but a lot of fun.

## The Happy Cooker

By Denise Beattie



"Cosmic Special" is the name of a uniquely perfect sandwich. If it stirs some vague recollection of fulfillment in you, it probably means that you have eaten at Etherea, the vegetarian restaurant of the now defunct Rochdale College. In the early '70's, when Rochdale was "thriving" and Etherea was dispensing inexpensive, delicious health, the Cosmic Special was a favourite.

As one of the former cooks, alias server, alias cleaner, et cetera (as were almost all staff), I'm taking it upon myself to share this now probably extinct sandwich with you.

**Gather:**

avocado - 1/4 per sandwich if you're careful, a third if you're hedonistic and 1/2 if you're absolutely lavish

sliced mushrooms  
sliced tomatoes  
fresh bean sprouts (if you can't get these try using lettuce)  
generous slices of cheese (we used edam or gouda)  
your favourite bread

**Procedure:**

First prepare the avocado by mashing it in a bowl, adding a touch of lemon juice and minced onion if you so desire. Spread this on a slice of bread. (The sandwich is open-faced.)

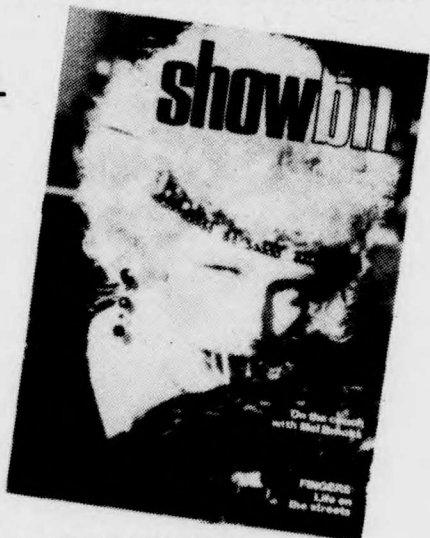
Next add a layer of fresh, sliced mushrooms. Third come the sprouts with the tomato slices on top of them. Last add the cheese. If you've got them, sesame seeds are included in the classic version, well spread on top of the cheese.

Now broil until the cheese is golden and bubbly. Eat!

## TO EXCALIBUR READERS ONLY! GET YOURS FIRST!

Don't run the risk of missing a single issue. Have Showbill delivered to your home BY 1st CLASS MAIL!

THE ONLY INTERNATIONAL MOVIE MAGAZINE OF IT'S KIND!  
**NOW 8 ISSUES A YEAR!**



1 year Subscription (8 ISSUES)  
Reg. Rate 6.00 — Excalibur Rate 5.00

2 Year Subscription (16 ISSUES)  
Reg. Rate 9.00 - Excalibur Rate 8.00

## Subscribe now

"I don't want to miss another issue of Showbill"



105 Davenport Rd.  
Toronto, Ontario, Canada. M5R 1H6

Yes, I want my personal copy of Showbill rushed by 1st Class Mail. Please enter my subscription as indicated below immediately. I enclose \_\_\_\_\_ to cover handling and postage. Please do not send cash through the mail.

(Cheques or Money Orders in Canadian & American funds only)  
(International Money Orders only for all others)

1 Year Subscription (8 ISSUES)  
Reg. Rate 6.00  Excalibur Rate 5.00

2 Year Subscription (16 ISSUES)  
Reg. Rate 9.00  Excalibur Rate 8.00

Name \_\_\_\_\_  
(Please Print)  
Address \_\_\_\_\_ Apt. No. \_\_\_\_\_  
City \_\_\_\_\_ Province or State \_\_\_\_\_  
Country \_\_\_\_\_ Zip or Post Code \_\_\_\_\_

ALLOW 4 TO 8 WEEKS FOR SUBSCRIPTION TO START

# BENNY HINN



## WILL BE AT EVANGELISTIC CENTRE

22 YORK MILLS ROAD  
(AT YONGE SUBWAY)

MONDAY, MARCH 6  
7:30 P.M.

DOORS OPEN 6 P.M.

EVERYONE WELCOME

Parking also available opposite the church at school  
SPONSORED BY THE BENNY HINN ASSOCIATION  
6700 FINCH AVE. W. — SUITE 501  
REXDALE, ONT. M9W 5P5  
PHONE 416-675-1374

## COMING EVENT! BENNY

WILL HOLD A CANDLELIGHT COMMUNION SERVICE TO CELEBRATE THE EASTER WEEKEND SATURDAY, MARCH 25, 7 P.M.

AT THE EVANGELISTIC CENTRE EVERYBODY WELCOME — DOORS OPEN 5:30 P.M.

## Ask Procter & Gamble what you can do with your BA degree! You could become the advertising / marketing manager for one of these P&G products!

Although only 5 are shown here, Procter & Gamble makes more than 30 well-known, well-advertised consumer brands.

For each brand, there is a small management group, usually just 3 people, totally responsible for planning, creating and supervising everything that is done to increase consumer acceptance of their brand.

The group is headed by a Brand Manager, an important level of management in our company.

Right now, we're looking for a few highly qualified Spring graduates with the potential to become Brand Managers.

You would start in our Toronto General Offices as part of a brand group for a specific brand, perhaps one of those shown here. To help you learn quickly, your Brand Manager would give you challenging assignments of increasing responsibility in various key marketing areas such as package design, special promotions, budget planning and analysis, and market research.

The emphasis would be on you, your ideas, your ability to contribute. You'll be promoted on the basis of merit alone. It's not uncommon to become a full Brand Manager within 3 years.

Since you will begin to manage from the day you join us, we're looking for "take charge" people with outstanding records of leadership while in university. "Superior academic achievement", "innovative", "a record of being able to get things done", and "good oral and written communications skills" are some of the words we use to describe the people we want.

If this kind of work interests you, find out more about us at your Placement Office. If you think you qualify, please send me your resume, including a recap of your achievements to date.

Mr. R.P. Chan  
The Procter & Gamble Company of Canada, Ltd.  
P.O. Box 355, Station "A"  
Toronto, Ontario  
M5W 1C5

