

ILLUSTRATED
SECTION

The Toronto Sunday World

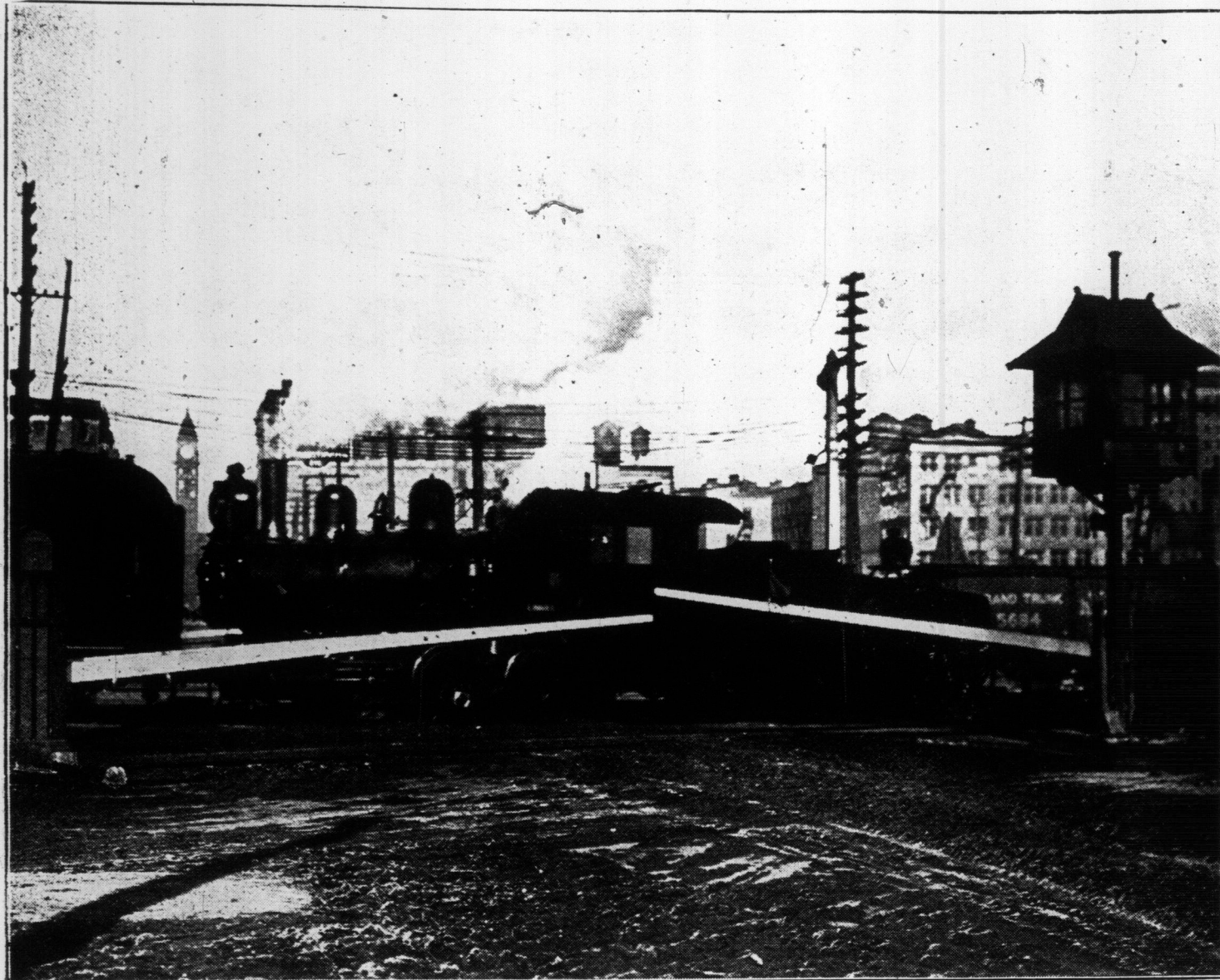
ILLUSTRATED
SECTION

29TH YEAR—PAGES 1 TO 8

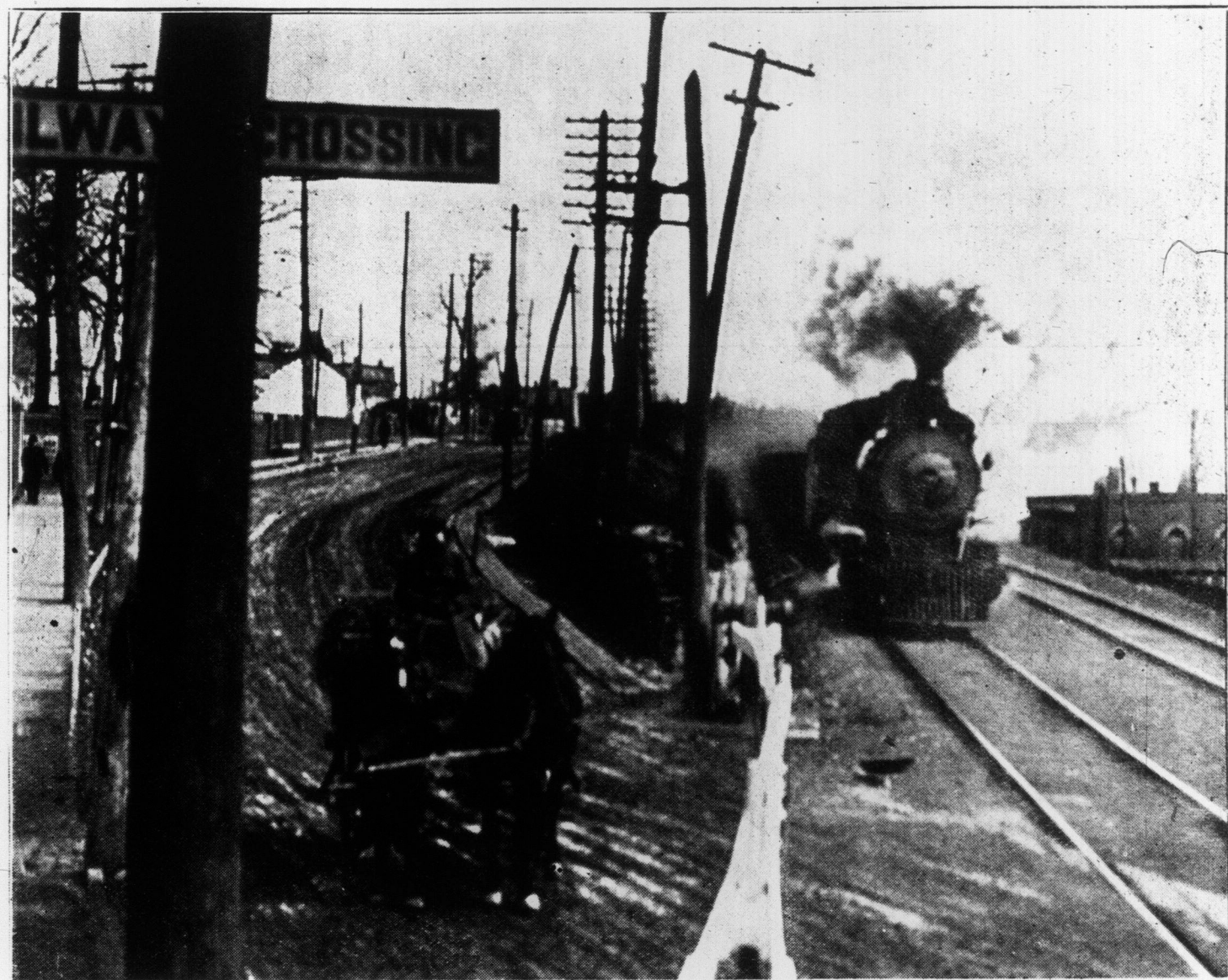
TORONTO, SUNDAY MORNING, MARCH 14, 1929

PRICE FIVE CENTS

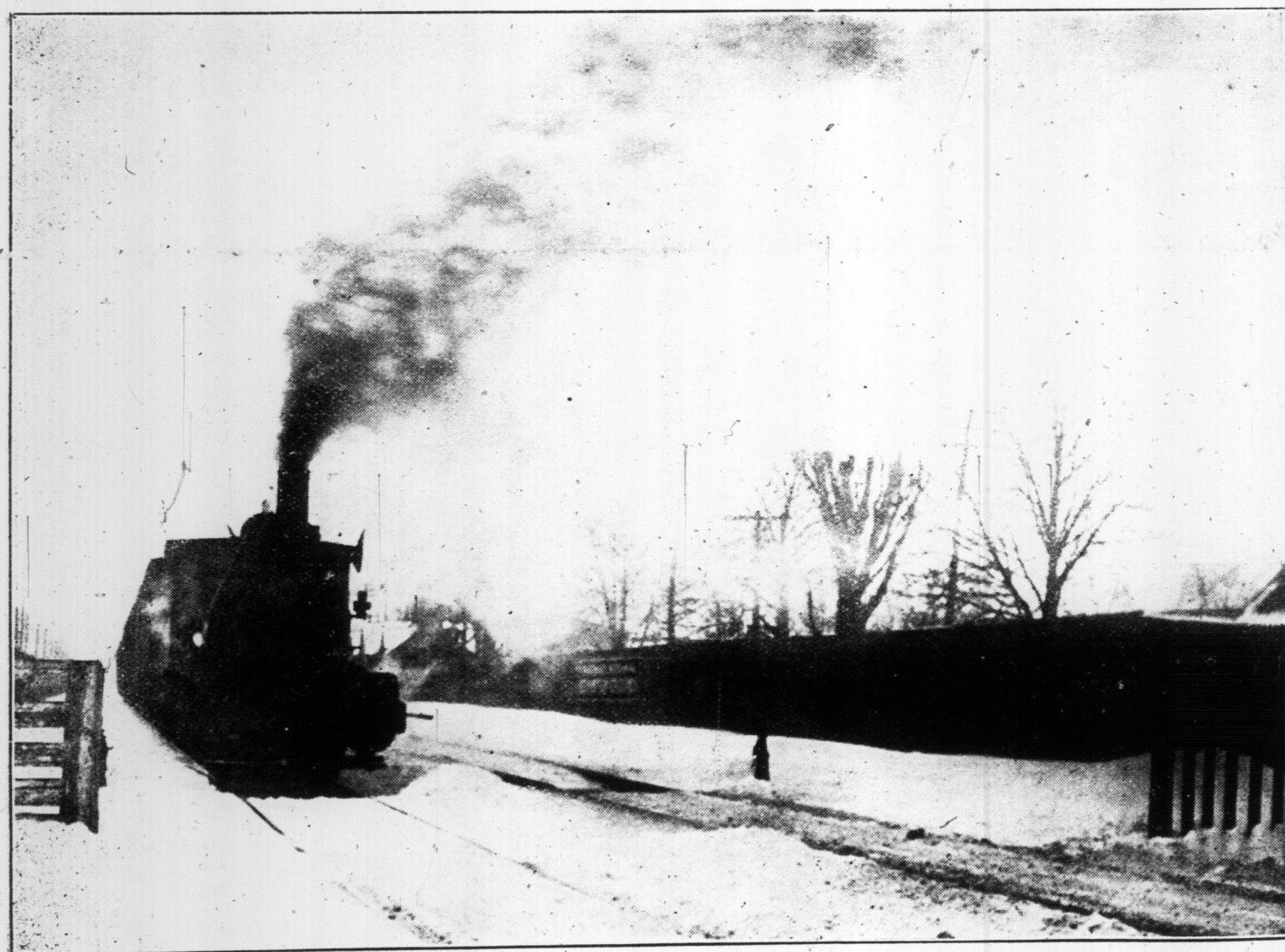
Level Crossings in Toronto, Where Lives of Hundreds are Endangered



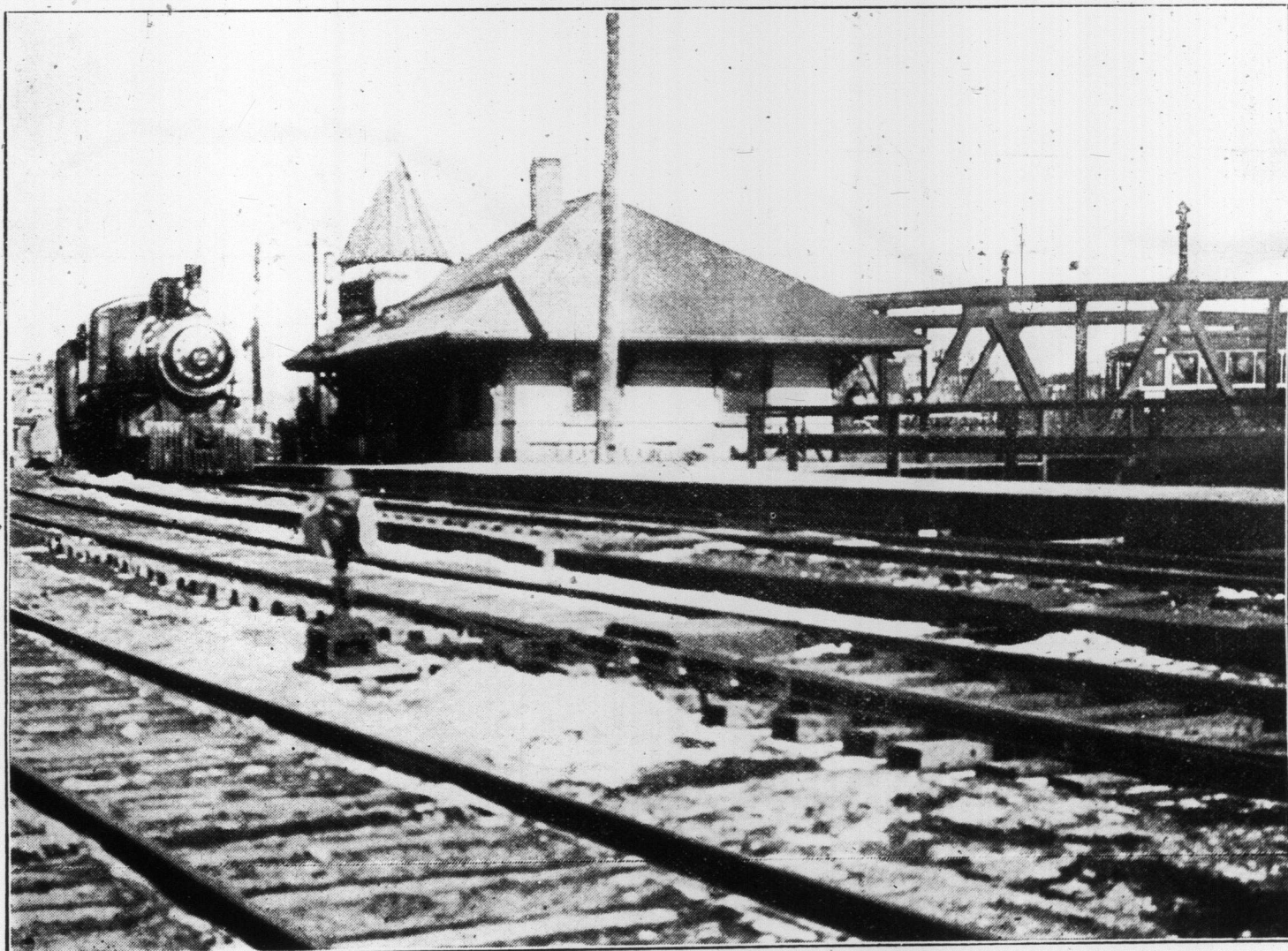
BAY-STREET, WHERE THOUSANDS CROSS TO AND FROM FERRIES IN SUMMER.



SUNNYSIDE, ONE OF THE MOST DANGEROUS CROSSINGS IN TORONTO.



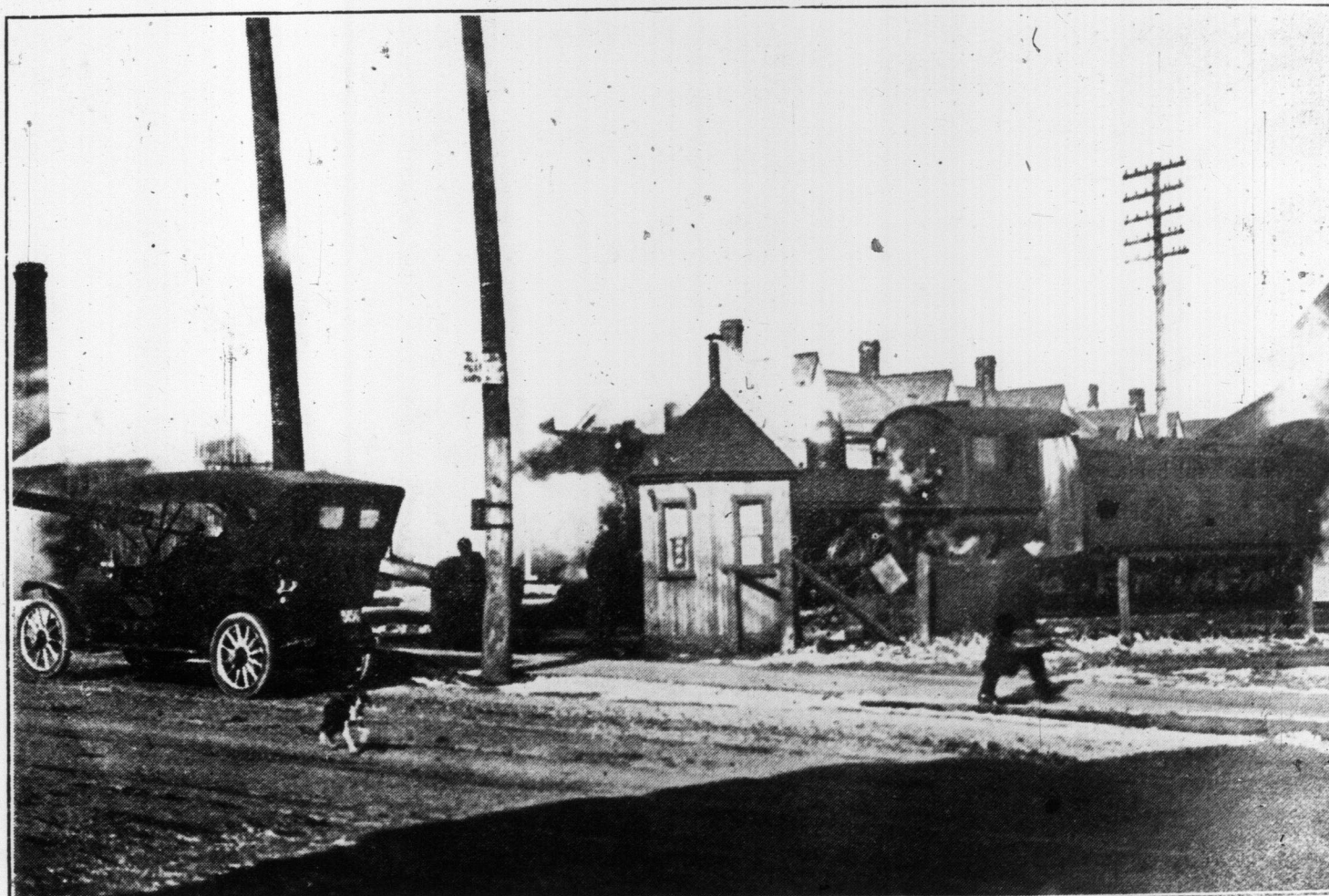
DUFFERIN-STREET, WHERE THERE ARE NO GATES AND WHERE LINE TAKES SHARP CURVE.



AT DON STATION, SHOWING THE DON BRIDGE AND A WAITING STREET CAR.



CHERRY-STREET, SHOWING TEAM CROSSING DURING BRIEF DELAY OF TRAIN.



RIVERDALE STATION, WHERE DAILY TRAFFIC IS REASONABLY HEAVY.