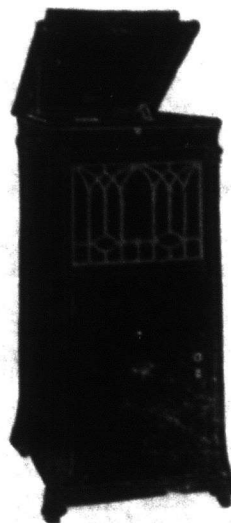


**OFFICIAL NOTICE**

**New Brunswick School Calendar**

1918 — 1919

- 1918 FIRST TERM**
- Dec. 10—Normal School Entrance Examinations for French Department begin.
  - Dec. 17—Third Class License Examinations begin.
  - Dec. 20—Normal and Public Schools close for Xmas Holidays.
- 1919 SECOND TERM**
- Jan. 6—Normal and Public Schools re-open after Xmas Holidays.
  - Apr. 17—Schools close for Easter Holidays.
  - Apr. 23—Schools re-open after Easter.
  - May 19—Observed as Loyalist Day in St. John Schools only.
  - May 23—Empire Day.
  - May 24—Last day on which Inspectors are authorized to receive applications for July Examinations.
  - May 26—Observed as Victoria Day (School Holiday).
  - May 27—Class III License Examinations begin (French Dept).
  - June 3—King's Birthday. (Public Holiday).
  - June 6—Normal School closes.
  - June 10—License Examinations begin.
  - June 16—High School Entrance Examinations begin.
  - June 27—Public Schools close.



**MUSIC'S RECREATION**

EDISON'S NEW ART

Remember—not imitation, but RE-CREATION. It is your privilege to hear and enjoy the world's greatest singers and instrumentalists in your own home, just as well as though you sat in theatre or concert hall, by means of

**THE NEW EDISON**

"The Phonograph with a Soul"

which actually RE-CREATES vocal and instrumental music with such fidelity that no human ear can detect difference between the artist's rendition and that of the instrument. Hear the NEW EDISON at your dealer's, or

**W. H. THORNE & CO., Limited**  
ST. JOHN, N. B.

**BOOKS FOR SCHOOL PRIZES!**

We have a fine assortment of Books suitable for School Prizes for both boys and girls in the different grades.

MAIL ORDERS WILL RECEIVE PROMPT ATTENTION

**E. G. NELSON & CO.**

56 KING STREET

ST. JOHN, N. B.

**OPERA HOUSE**

ST. JOHN

**VAUDEVILLE**

High Class and Refined  
Good Pictures and Concert Orchestra

Entire change of program starting Friday evening and continuing to the Thursday evening following.

Afternoons at 2.30  
Saturday Afternoons at 2 and 3.30  
Every Evening at 7.30 and 9

PEOPLE'S POPULAR PRICES

Made in Canada

Widths:

- AA Mail
- B Orders
- C by
- D Parcel
- E Post

**FRANCIS & VAUGHN**  
St. John, N. B.



**EARLY FALL FASHIONS FOR LADIES**

We are now receiving our first shipment of Footwear for fall wear from the manufacturers, and must say that we have never felt more pleased with any shoes we have ever received in previous seasons. The styles this fall are daintier in patterns and are on better fitting lasts. Some makes we handle:

"Dorothy Dodd," "Bell," "Winnie Walker,"  
"Waterbury & Rising Special."

In one of these brands there is style and fitting for you.

"THE HOME OF RELIABLE FOOTWEAR"

**WATERBURY & RISING, LIMITED**

THREE STORES - - - ST. JOHN, N. B.

